

Mini News

News For The Employees of Data General

August 15, 1986

Information Management Group Integrates MIS/DP Areas

The reorganization of Data General's management information systems (MIS) and communications areas has been completed with the formation of the Information Management Group, reporting to Communication Systems Group Senior Vice President Colin Crook.

According to Colin, "The Information Management Group has been formed to allow Data General's MIS organizations to transform into an information utility. This new organization will not only provide information services to Data General but it will also be a premier customer reference for our Sales and Marketing groups."

Reporting to Colin are: the Planning Control and Administration Division; the Marketing/Sales, Finance and Administration Development Division; the Manufacturing and Field Service Development Division, the Facilities and Operations Division, and the Special Projects Division.

The Planning Control and Administration Division, led by Director **Jagdish Dalal**, will provide the Information Management Group with administrative, planning and control, training and architecture support. Jagdish has been with Data General for five years. He most recently was director of Field Engineering MIS and prior to that, director of Marketing and Sales MIS.

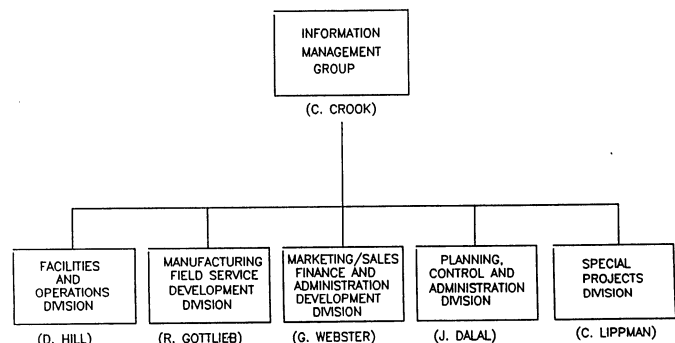
Information management systems for worldwide marketing, sales, finance and administration areas will be developed by the Marketing/Sales, Finance and Administration Development Division. This area reports to Director **Gordon Webster**. Gordon has been with Data General for 10 years. Most recently, he was director for Financial Systems. Prior to that, he was manager for the same group, and Information Services manager for Finance.

The Manufacturing and Field Service Development Division, under Director **Richard Gottlieb**, is responsible for identifying, planning and delivering information management systems for the worldwide Manufacturing and Field Engineering organizations. Rich-

ard had been director of Manufacturing MIS since joining Data General more than four years ago. Prior to that, he was the systems director at Astra Pharmaceutical, and an MIS manager at Abbott Laboratories.

The Facilities and Operations Division will provide computer facilities and operations services to those organizations supported by the Information Management Group. In addition, this division will be responsible for network operations, including the Network Control Center. The division is led by Director **Dave Hill**. Dave has been with Data General for more than 10 years. For the past five years, he was director of the Data Services and Communications area. Prior to that, he was manager of the Quantitative Management Services department.

The Special Projects Division will be responsible for the deployment of business automation and telecommunications services, and develop market opportunities through internal and external business relationships. Additionally, this division will be responsible for worldwide internal network planning. This division reports to Director **Craig Lippman**. Craig has been director of Marketing and Sales Information Systems for the past two years. Prior to that, he was director of support at Nixdorf, and director of marketing at Avatar Technology. Craig had been with Data General from 1975 to 1982, as manager of Software Services within the North American Sales Division, and as a branch, district and regional Systems Engineering manager.



Tocher Named Director Of Data Comm And Network Division



Don Tocher

Don Tocher has been named division director of the Data Communications and Network Division, reporting to Colin Crook, senior vice president of the recently-formed Communications Systems Group. Don will oversee the product planning and development for industry-standard networking and data communications products.

Most recently, Don was director of the Communications and Advanced Systems Development (CASD) group within the Systems Development Division (SDD). Prior to that, he was director of SDD's Advanced Systems area. Don joined Data General in 1981 as director of Systems Architecture and Engineering Services. He came to the company after more than 21 years at IBM, where he held a variety of engineering management positions.

Don holds a BS in electrical engineering from Princeton and a master's degree in the same subject from Columbia.

Reporting to Don are: **Bob Hutton**, who continues as Communications Software Development manager; **Martyn Judd**, European Development Lab manager; the Product Planning manager, Don Tocher-acting; and **Ranjit Singh**, Network Hardware and Services manager.

Product planning efforts will complement marketing activities taking place within the Product Marketing Division. Besides managing the development of advanced networking and data communications hardware products, Ranjit will assume responsibility for the newly-formed Network group, which will provide support to the field for opportunities that require significant networking products.

To provide support for SDD projects, CASD's Communications Hardware Development department will be divided between SDD and the Data Communications and Network Division. Within SDD, a group will report to Power and Communications Hardware Systems Manager Trey Burns.

Reward Offered For Development Professionals

Data General plans to add nearly 20 percent more employees to its research and development force over the next year. Employees are being asked to take part in that effort by recommending experienced product development professionals for employment. Once their referrals are brought on board, employees will receive a cash bonus as a reward for their efforts.

Openings exist for hardware and software engineering positions as well as technical support opportunities in the Systems Development Division (SDD) at Westboro and Research Triangle Park (RTP), Central Engineering at Westboro, and within the newly-formed Volume Products Division (VPD) in Durham, N.H.

To refer a qualified candidate, simply forward a resume or completed Employee Referral form (available from your local Human Resources representative) to one of the following groups: Human Resources for SDD at Mail Stop D112 in Westboro; Human Resources at RTP, Mail Code 1V; VPD's Human Resources group at Newington, N.H., Mail Code 5O; or Corporate Employment at Mail Stop A237 in Westboro.

If the person is hired, the responsible employee will be eligible for a \$1,000 bonus and \$2,000 for each subsequent hire.

A list of specific jobs and their locations can be found in the latest Career Opportunities posting.

Sales And Systems Engineering, Too

Employees are reminded that the new Employee Referral Program also applies to qualified Sales and Systems Engineering referrals.

Send a completed referral form for these positions to Corporate Employment at Mail Stop A237 in Westboro or the Sales office nearest the applicant's preferred location. Employees may refer as many candidates as they wish and reap the rewards!

DASHER/286 Workstation Compatible With The IBM PC-AT

Data General has introduced the DASHER/286 intelligent workstation, which is compatible with the IBM PC-AT. It features an Intel 80286 processor, allowing it to process information 25-percent faster than the IBM PC-AT. The DASHER/286 has standard memory of 640-KB RAM, compared with 512 KB for the IBM PC-AT.

"The DASHER/286 is the newest addition to our family of powerful workstations which extend the functionality of Data General's CEO comprehensive electronic office system to the MS-DOS environ-

ment," says Dave Lyons, vice president for Group Marketing.

"With CEO, the DASHER/286 can deliver business applications to the personal-automation level. High performance and integration between Data General's products and the MS-DOS world, make this workstation the ideal choice for users in a variety of environments," Dave adds.

Standard features include a single 1.2-MB 5.25-inch diskette drive. The DASHER/286 also offers a full range of optional workstation features. It is available in either desktop or floor-mounted configuration, and is expandable with up-to-four internal storage devices - a second 5.25-inch diskette drive with either 360-KB or 1.2-MB capacity or a 3.5-inch 720-KB disk drive. Up-to-two fixed 3.5-inch Winchester disk drives with 20-MB each also are available. The DASHER/286 can execute both graphics and text with a standard monochrome display, using Data General's proprietary monochrome/color text/graphics video adapter option printed circuit board.

With Data General's CEO CONNECTION software, users have access to CEO on a host computer or to MS-DOS-based IBM PC-AT applications. In addition, through CEO CONNECTION, users have the flexibility of integrating the DASHER/286, DASHER/One workstations, DATA GENERAL/One portable personal computers and IBM PCs with Data General's complete line of departmental computer systems.

The DASHER/286 base system, which includes a 1.2 MB-floppy disk, 640-KB RAM, two serial ports, one parallel printed port and the MS-DOS 3.1 operating system, is priced at \$3,395. A similarly configured system with a 20-MB hard disk is priced at \$4,095. Distribution is through Data General's Sales force and value-added reseller channel. Delivery is 60 days after receipt of order.

Data General Integrates Technical Applications With OA

Data General has introduced two third-generation software environments for its TEO technical electronic office software family that gives the company product leadership in two important segments of the technical electronic office market: electronics design automation and three-dimensional design and modeling.

TEO/Electronics software is a third-generation electronics design automation software system, fully compatible with Data General's CEO comprehensive electronic office software. It integrates advanced engineering tools with office functions.

TEO/3D software is a third generation computer-aided design and modeling software program for architectural engineering, mapping, mechanical engineering and manufacturing applications, that also

integrates CEO compatible office automation functionality.

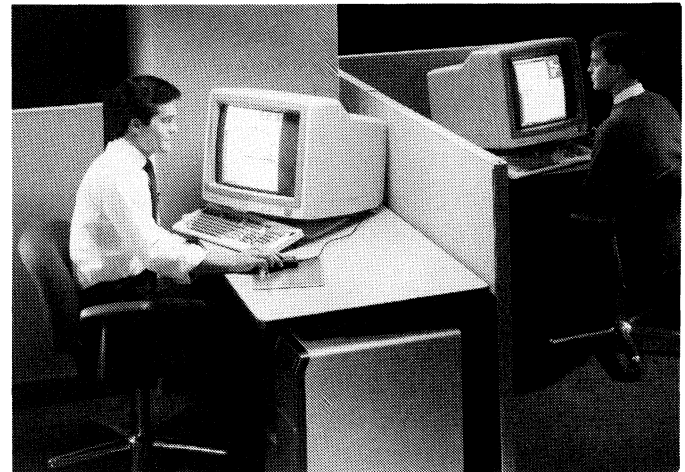
Data General also has entered into a cooperative marketing relationship with Fujitsu Microelectronics, Inc. to support TEO/Electronics workstation system sales. One of the first TEO/Electronics systems ordered will be used by Fujitsu in its Tokyo demonstration center.

TEO/Electronics and TEO/3D are specifically designed to be integrated with Data General's DS/7000 Family of engineering workstations.

"Data General is the first company to provide technical workstations that integrate both engineering and office automation functionality," says Dave Lyons, vice president of Group Marketing. "These announcements underscore Data General's commitment to deliver complete industry-specific solutions, based on a technologically-superior product platform."

"Just as the integrated design of our CEO office automation software made Data General a leader in business automation, TEO integration features make Data General a leader in technical electronic office applications for engineering departments and organizations," says Dave.

TEO/Electronics



TEO/Electronics addresses both the engineering and office automation requirements of engineers by merging sophisticated design and simulation tools with CEO comprehensive electronic office software capabilities.

TEO/Electronics software lets users concurrently create and simulate engineering designs. It combines professional productivity tools with the first electronic design system to use an advanced object-oriented database and interactive logic simulation.

"The first-generation computer-aided design (CAD) and second-generation computer-aided engineering technologies revolutionized electronics engineering for their time. TEO/Electronics represents a third generation in electronic design automation called computer-integrated engineering (CIE)," says Don McDougall, vice president for the Industry Marketing Division.

The TEO/Electronics system will be marketed to organizations that design and manufacture large-scale and very large-scale integrated (LSI and VLSI) circuitry, gate array integrated circuits (IC), and printed circuit boards (PCB).

Software components of TEO/Electronics include:

- *TEO/Electronics Logic Design System* - A schematic capture system featuring intelligent borders, windowing, pop-up menus and icons, all controllable using a mouse as the primary input device.
- *TEO/Electronics Interactive Simulator* - A digital logic simulator that supports design verification through gate-level, functional or behavioral modeling.
- *TEO/Electronics Component Simulator Libraries* - Pre-constructed libraries contain 2,400 standard components commonly used with a schematic capture module.
- *TEO/Electronics Interface Toolkit* - Design database language and procedural language interface are sophisticated interfaces for tightly integrating new or existing customer applications into the TEO/Electronics environment and databases.

TEO/3D

TEO/3D combines three-dimensional modeling and database management capability with professional productivity tools for a range of engineering and manufacturing applications.

The TEO/3D database and design capabilities are based on EASINET, developed by EASINET Holdings Limited of Sydney, Australia -- a leading CAD software manufacturer.

With its live, concurrent-windowing features and user configurable menus, TEO/3D provides a platform for integrating design applications around an open, three-dimensional relational database core. TEO/3D can include word processing, electronic mail, on-line filing and decision support functions based on Data General's CEO office automation software.

"TEO/3D is the only third generation product for architectural engineering, mapping, mechanical engineering and manufacturing applications," says Sherm Rutherford, director of the Applications Business Unit. "No other company offers a product that provides the combination of an open relational database architecture, broad range of applications integration capabilities, and true distributed systems environment.

"The database serves as a solutions platform around which users can incorporate a variety of applications programs. With this capability, they can create customized systems best suited to their own individual needs.

"The '3D' in TEO/3D represents design, data management and distributed architecture. This combination provides major benefits to the user: en-

hanced design and production turnaround, better departmental and corporate communications, and more efficient use of computing resources," Sherm adds.

Team Tyrrell And TEO/3D Team Up On Racing Circuit

Earlier this year, Team Tyrrell, a leading participant on the Formula One Grand Prix circuit, joined forces with Data General to form Data General Team Tyrrell. Throughout the 1986 Formula One racing season, the team is using Data General's computer technology to squeeze an extra measure of performance out of its cars in applications ranging from the design studio to the track itself.

Data General Team Tyrrell is among the first users of Data General's third generation, three dimensional TEO/3D design and modeling software. The TEO/3D application is one aspect of a total information management network that ranges from the DATA GENERAL/One portable computer to the ECLIPSE MV/20000 system.

The TEO/3D software and Data General's DS/7000 Family of engineering workstations are being used to optimize the design of the Tyrrell cars' sophisticated chassis to achieve the best combination of stiffness, weight, aerodynamics and suspension characteristics.

"If we can produce components of the right strength, but as light as possible, we make huge savings on lap times," says Bob Tyrrell, team marketing director.

"Another area where Data General workstations will help is in designing new suspension layouts, a task that will now take only a fraction of the time we used to spend," Bob adds.

In addition to workstations, the team is using an ECLIPSE MV/20000 computer located at Data General's European headquarters in Paris to perform computing-intensive simulations and analysis to verify designs. Tyrrell headquarters at Surrey, England, communicates with the ECLIPSE MV/20000 system through Data General's communications network. Data from the Surrey-based ECLIPSE MV/2000 DC computer and Data General's DS/7000 Family of engineering workstations can easily and quickly be moved to the more powerful machine. The benefits of having access to this broad range of computing power include faster development of designs and lower costs, achieved by doing rapid evaluation of new design specifications.

People

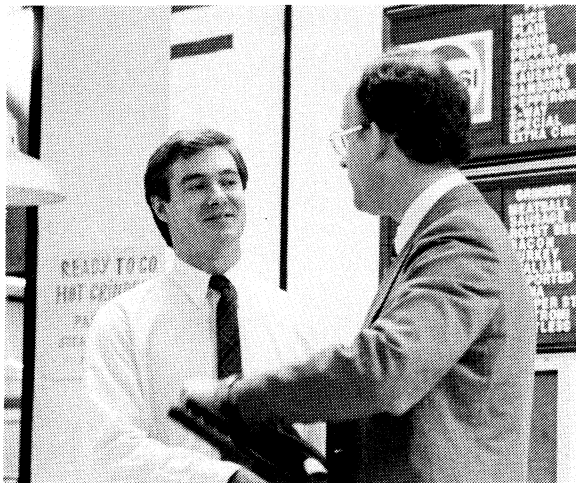
In Volume Products...

John Freeman has been named controller of the newly-formed Volume Products Division (VPD). John will report to the Business Division Group controller and will be based in Durham, N.H.

Before assuming his new position, John served as controller for the Portsmouth Manufacturing facility. He joined Data General in 1983 as a Finance manager for what was then the Information Systems Division.

John is a graduate of the General Electric Corporation Financial Management Training Program. He holds an MBA in business administration and a BS in finance from the University of Rhode Island.

Treasury Person For Quarter 3



George McClelland (right), vice president and treasurer, presents Patrick Rosseel of the Corporate Customs group, with the Treasury Person of the Quarter award for Quarter 3. Patrick received the award for his "exceptional" efforts in ensuring that all overseas shipments of Data General computer systems and materials were cleared through U.S. Customs before the close of the quarter.

Quarter 3 Sales And Systems Engineering Awards

The following employees have received Sales and Systems Engineering awards for their outstanding performance during Quarter 3 of fiscal year 1986.

	<i>Sales Representatives</i>	<i>Systems Engineers</i>
Area 1	Mike Deutsch Peter Cary Bill Stewart Dan McAuley Steve Risavy George Grieger Doug Hummel	Mark Cain Gary Wight Bill Goodman Anjali Chhabra
Area 2	Greg Neff Tony Affronti Sherle Webb Ron Divine Cardell Sanders	Lorrie McHenry Jim Armstrong Nancy Meinen Tom Gutnick
Area 3	Brian Biles Charles Penrose Pat Funk	Tricia Schurtz Pam Pape Susan Telewski
Area 4	Jack Magnusen Bob Hartrich George Russell Debra Burkey	Keith Gunderson Brian Seiffert Pete Kobernus Gerry Dewes
Federal	Bruce Johnson Jeff McAllister Margaret Breen	Mark Smith Gaylen Uecker
Canada	Peter Wilson	Alan Larmour C.K. Tan
	Branch Sales Managers	Branch Systems Engineering Managers
Area 1	Eric Taylor	
Area 2	Mike Thompson	Steve Meadows
Area 3	Jim Fandrich	
Area 4	Dave Thomsen	Dennis Zeitz
Federal	Dick Tower	
Canada	Mark Burack	

Regional Sales Manager

Bruce Wiens of Area 3, Region 2

Regional Systems Engineering Manager

Tom Swysgood of Area 4, Region 2

Mini News is published weekly for the employees of Data General-Westboro. Material may be submitted for publication to Joy Ibraham, extension 4705, MS A235. Data General - An Equal Opportunity Employer.

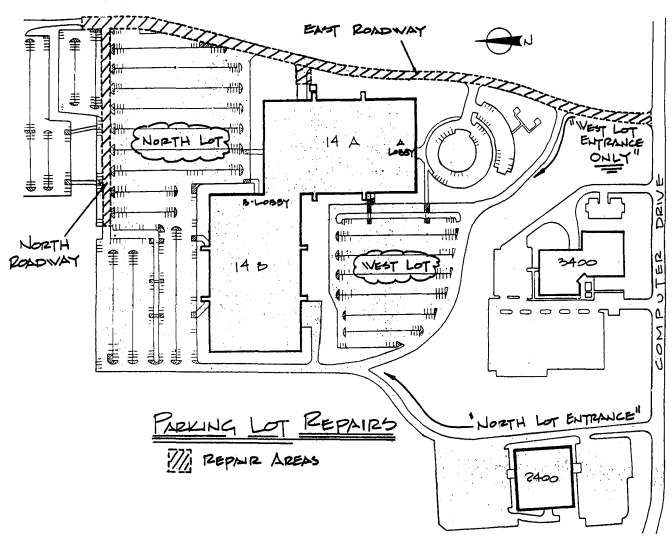
Westboro

Driveway Reconstruction Begins Next Week

Reconstruction of the East and North driveways will start on Saturday, August 23, and continue through the following week. A portion of the East Road, from the Visitor's Circle entrance to the rear of the North Parking lot, will be closed to all traffic starting Friday, August 22.

Employees who park in the North lot should enter and exit via the 2400 Computer Drive access road. West Lot users can continue to enter and exit via the East Road to the West lot access. See map below.

A section in the rear of the North parking lot will be closed to permit work to progress. However, overflow parking will continue to be available in the lower North parking lot. For safety's sake, all walkers, joggers and cyclists should avoid construction areas.



Meeting Space Available

In need of a conference or meeting room? Educational Services has rooms available in the Education Center at 2400 Computer Drive.

For information on booking and availability, contact Elaine Karis at 221-1619 or Judy Glasgow at 221-1616, or send a CEO message to ROOMS:ARISTO.

Training

BU Technical Courses Televised Live On Site

Corporate Management and Organizational Development again is sponsoring a set of Boston University (BU) engineering and computer science courses for the fall semester, delivered through BU's Interactive Network.

Through the network, classes are given on campus at BU and televised live at Data General-Westboro and other companies. Courses can be taken on a "special student" basis or as part of a formal BU-degree program.

BU representatives will be at Data General-Westboro on Thursday, August 21, at noon to provide more information about the program and accept registrations. An additional registration-only session will be held on Thursday, August 28, at noon. Both sessions will be held in the Engineering Training Room, located near the main cafeteria across from Mail Stop C138. A course list will be distributed at the meeting or can be obtained by calling extension 6958 in Westboro.

Note: For on-campus levels, tuition has been reduced to \$1368 for a four-credit course, and \$600 for a two-credit course. Payment can be supplemented through Data General's Educational Assistance Program.

R&D Lecture Series Resumes

Supercomputing is the subject as the fiscal year 1986 Research and Development (R&D) Guest Lecture Series resumes on Wednesday, August 20, at 3 p.m. in Westboro's main cafeteria.

Dr. David Kuck, from the Center for Supercomputing Research and Development of the University of Illinois at Urbana-Champaign, will speak on "The Cedar System," a high-speed, parallel processor with associated system and application software, currently being developed at the center. The hour-long talk will be followed by a question and answer session.

The R&D Lecture Series is coordinated by Bob Gardella of Corporate Management and Organizational Development. For more information, contact Bob at extension 5419 in Westboro.

Activities

Great Woods Outing Is Sunday

The Great Woods outing scheduled for Sunday, August 17, has been sold out. For those attending the event, the concert will feature the Pittsburgh Symphony Orchestra, under the direction of Michael Tilson Thomas. In addition, special guest star Sarah Vaughn will perform an arrangement of Gershwin's greatest songs. Employees should plan to arrive at 7:30 p.m.

All seating for Data General attendees is in the pavilion. If employees wish to picnic or purchase food at the concert, they are urged to arrive early and in plenty of time before the start of the show. There are no formal picnic areas on the site. However, there are grassed areas along the edge of the property that many people use for pre-show picnics.

Employees should be aware in advance of the facility's policies, aimed at maintaining a noise-free environment in the pavilion during Pittsburgh Symphony events.

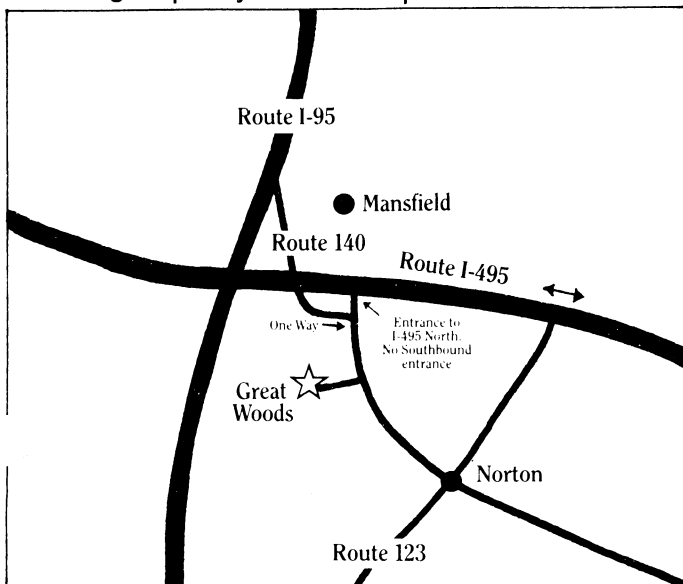
- *No pavilion seating is allowed during the performance.* All concert go-ers must be in their seats by 8 p.m. or wait until intermission to be seated. The same rule applies during the second half of the show unless there are planned breaks between musical numbers.

Food and drink is not allowed in the pavilion during the performance since the noise may disturb other patrons.

Finding Great Woods

The Great Woods Center for the Performing Arts is located on 106 acres at Route 495 and Route 140 in Mansfield, about 35 miles south of Westboro and Boston.

Directions are easy. Take Route 495 south to Exit 11, and onto Route 140. Turn right. Great Woods is less than half a mile down the road on the right. The following map may also be helpful.



1986 Data General All-Star Softball Games

The Data General Softball League will hold its annual all-star event on Friday, August 22, at the Knights of Columbus field in Ashland.

This year's games feature all-star players from both leagues squaring off against each other to determine the "superior" division. In addition, a Data General executive team has been assembled to face the league officers.

Games will begin with the American League playing at 5:30 p.m., followed by the executive game at 6:45 p.m. and the National League game at 8 p.m. Refreshments will be available, so come join the fun and cheer on favorite team. (In case of rain, games will be played on Friday, September 12.)

Exercise Classes Given At Westboro

The Data General Fitness Club continues its on-site exercise program with a sign-up for the next aerobics session. New members may sign up on the first day before the start of either of the following classes.

Dancin' Aerobics and Free Style Aerobics are offered twice-a-week in the main cafeteria at 5:30 p.m. for an eight-week period. Dancin' Aerobics classes will take place every Monday and Wednesday starting on Wednesday, September 3. The Free Style Aerobics session will be held every Tuesday and Thursday, beginning on Thursday, September 4. All classes are taught by qualified exercise instructors from the Greater Worcester YMCA.

The cost is \$20 per person for the eight-week program. Repeat attendees need only fill out the form below and mail it to Carol Brestovan at Mail Stop B135 in Westboro along with a check. All payments must be made in check, made payable to the Data General Fitness Club.

Data General Fitness Club

(for repeat attendees only.)

Name: _____

Badge#: _____ Extension _____

Dancin' Aerobics
(M/W at 5:30 p.m.) - \$20 _____

Free Style Aerobics
(T/TH at 5:30 p.m.) - \$20 _____

Total Enclosed _____

Mail check made payable to the Data General Fitness Club to Carol Brestovan at Mail Stop B135 in Westboro.

MARKETPLACE

CARPOOL

Carpool , Existing carpool needs rider, Brookline/Brighton/Allston/Newton to Webo/Sobo, flex, Katz x7093.

Riders , to Ithaca, NY, any/assorted weekend/s this fall, 393-2475 (Northboro).

FOR RENT

Loon Mountain Condominium , new, minutes to all summer & fall attractions, slips 8, 2 baths, pool, \$350/wk, \$200/wkend, 531-6264/625-0711 (Peabody/Somerville).

Northboro Duplex , 3 bdrm, 1 1/2 baths, w/w carpet, 6 mos old, \$850+, 875-2320 (Framingham).

Apartment , 6 rms, 3 bdrms, auto hot water, hardwood flrs, 799-6873 (Worcester).

Condominium , 2 bdrm, w/w carpet, secured bldg, off street parking, laundry facilities, \$525/mo + utils, 870-0868 (Westboro).

Apartment , large 3 bdrm, 481-4169 (Southboro).

WANTED

Roommate , to share new 2 bdrm modern apt in Webo, 898-3720 (Westboro).

Roommate , to share 2 bdrm, 2 bath duplex, non-smoker, cat in residence, \$400 + 1/2 util, 444-9505 (Needham).

Roommate , to share 3 bdrm condo, yard, garage, 393-2233 (Northboro).

Roommate , to share large country house, 6 mi to Webo, near major routes, storage, non-smoker, no pets, \$290/mo, 393-2475 (Northboro).

Roommate , to share 2 bdrm townhouse, pool, tennis, minutes from Webo, \$370/mo incl heat, avail 9/1, 898-3800 (Westboro).

FOR SALE

Guitar , Stella Folk harmony guitar, w/case, BO, 792-9063 (Worcester).

Screen House , 3 yrs old, 8' x 10', 755-2307 (Worcester).

Carpeting , approx 60 sq yds, off white, \$150, 987-3220 (Webster).

House , Raised ranch, 3-4 bdrms, 2 1/2 baths, new kitchen & family rm, garage, \$149,900, 485-5717 (Marlboro).

Rider Lawn Mower , 5 hp, \$100, 883-1097 (Blackstone).

Items , Colonial brown couch, matching gold chair, \$225; green baudoin chair, \$35; brown storm door, 30" x 68", left hinge, \$40; Benjamin Moore paint, 3 gals, navajo white, 1 gal flr enamel, burnt cork, \$10/ea, 473-6091 (Milford).

Developing Equipment , black & white developing equip w/Belser enlarger, \$100, 478-2668 (Milford).

Stationary Bicycle , speedometer, timer, tension control, BO, 444-9505 (Needham).

Camera , Minolta XG1 35 mm, w/case, strap, 135 mm f 2.8 lens, 118A auto flash, 2X teleconverter, \$150/BO, 478-6827 (Milford).

10 HP Arien 2 Stage Mower , 5 forward, 5 reverse, \$675/BO, 234-5176 (Whitinsville).

Tickets , 4 for Giants of Jazz, Aug 17th at 8:00 pm, South Shore Music Circus, \$20/ea, 655-3039/655-2553 (Natick).

Items , Hafler DH-200 power amp, 110 watts/ch, \$300; Nad 1020 pre-amp, \$150, 473-5939 (Milford).

Air Conditioner , Emerson, 5,000 BTU window unit, \$200, 655-4510 (Natick).

Items , Sears Gas Dryer, 4 yrs old, \$125; poster bed frame, \$30; 26" mens bike, \$30, 475-6874 (Andover).

Porta-Crib , w/bumpers, 481-6822 (Southboro).

2-Family House , Brookline, by owner, condo potential, recently remodeled, new gas heat, stucco exterior, inside exposed brick, skylights, hardwood, decks, frplcs, 2 1/2 baths, laundry, storage, 962-9034 (Westford).

Bundy Alto Saxophone , overhauled 5/86, incl case, \$300, 870-1861 (Westboro).

Condominium , 2 bdrm, appl, AC, patio, w/w carpet, end unit, near Mass pike, \$92,900, 839-2311 (Grafton).

Items , Pine dining set, 6 chairs, 2 leaves, dry sink, \$500; living room set, sofa, chair w/ottoman, coffee table, 2 end tables, 2 lamps, \$175, 966-1681 (Bellingham).

Items , Contemporary multi-color sleeper sofa, \$100/BO; records, 200 45 RPMs from the 60s and 70s, \$40/BO, 757-7848 (Worcester).

Oriental Dining Room Set , Century, table w/2 leaves, 2 arm chairs, 4 side chairs, sideboard, \$2200, 879-9934 (Framingham).

Items , AKAI 5 bpc equalizer, \$50; JVC cassette deck, \$50; condominium, 3 bdrm, fully appl, \$74,900, (401) 766-7545 (Woonsocket, RI).

Sofa/Loveseat , green & white, \$400, 877-8610 (Framingham).

Items , Snowthrower attachment, for Sears lawn tractor, \$350/BO; sofa bed, 3 seat/queen size, ivory, \$300/BO; sofa bed/loveseat, brown, orange, cream stripes, \$200/BO; recliner, black vinyl, \$50/BO; chair, swivel rocker, low-back, gold, \$75/BO, 2 pedestal end-tables, \$50/pr/BO; stereo, turntable, autochanger w/cartridge, dual, \$90/BO; tuner/amp, Scott, \$125/BO; tuner/amp, Sansui G701, 85 watt/ch, \$250/BO; stereo stand, Sansui GX200, 3 shelves, \$85/BO; sleeping bag, down, Arctic grade, \$100/BO; sleeping bag, fibrefill, 3 season, \$25; foam mat for sleeping bag, Karrimat, \$10; 839-9795 (Grafton).

Snow Tires , Firestone B78-13, low mi, \$50/BO, 842-3478 (Shrewsbury).

AUTOS

'65 Ford Truck , w/CB radio, 842-8589 (Shrewsbury).

'68 Yamaha Motorcycle , 842-8589 (Shrewsbury).

'72 MGB , \$800/BO, 839-9059 (N. Grafton).

'72 Chevrolet Nova , passed inspection, \$300/BO, 562-7417 (Hudson).

'74 Dodge Dart , slant 6, auto, PS/PB, Alpine AM/FM/cassette, new tires, muffler, \$700, 651-3663 (Natick).

'74 Chevrolet Malibu , 6 cyl auto, many recent parts, \$750, 234-6806 (Whitinsville).

'75 Mustang II Hatchback , 86K mi, for parts, \$300/BO, 842-3478 (Shrewsbury).

'76 Dodge Colt Station Wagon , 5 spd, new carb, starter, battery, \$650, 481-8743 (Southboro).

'77 Omega-Brougham , brown, new tires, brakes, paint job, reconditioned last year, \$2000/BO, 757-7848 (Worcester).

'78 Ford Fiesta , 64K mi, \$895, 962-9034 (Westford).

'78 MGB , yellow w/blk int, 45K mi, 1K mi since rebuilt eng, new clutch, alternator, AM/FM, \$3800/BO, 376-4156 (Millis).

'78 Honda CB750K , 4276 mi, w/xtras, \$1200/BO, 528-6405 (Franklin).

'79 Caprice Classic , 4 dr, rustproofed, new exhaust, \$2100/BO, 473-3967 (Milford).

'80 Ford Fiesta , 50K mi, AM/FM/Cassette, \$1600, 779-2705 (Bolton).

'80 Chevette , yellow, 2 dr, auto, 95K mi, stereo, snows, \$1000, 244-3450 (Newton).

'80 Ford T-Bird , 8 cyl 302, 2 tone blue, AC, pwr windows, new Kenwood AM/FM/Cassette, \$2500, 764-6747 (Northbridge).

'80 Mazda RX-7 , red, 5 spd, 100K mi, \$3500/BO, 393-7162 (Northboro).

'81 Camaro , 54K mi, lt blue, 6 cyl, stereo, radials, \$3700, 839-9387 (Grafton).

'82 Yamaha Virago , many extras, low mi, \$1700/BO, 883-9690 (Bellingham).

'82 Yamaha Seca 750 , silver w/cover, lock, 800 mi, \$2200, 877-0701 (Framingham).

'82 Ford Mustang , 2 dr hatch, AM/FM/cassette, 4 spd, 45K mi, \$3200/BO, 881-4173 (Ashland).

'84 Toyota Supra , black, 5 spd, loaded, pwr snrf, 28K mi, \$12,000, 485-4095 (Marlboro).

'84 Datsun 300ZX Turbo , frost blue, 27K mi, stored in winter, T-roof, AC, cover, radar, loaded, \$14,000/BO, 528-6405 (Franklin).

'84 Mercury Gran Marquis LS , silver, loaded, 23K mi, \$10,000/BO, 365-7695 (Clinton).

'85 Chevrolet Camaro , black, T-roofs, Keystone mags, loaded, auto, \$10,900, 366-1808 (Westboro).

'85 Honda Nighthawk 450 , \$1100, 358-2469 (Wayland).

'85 Ford EXP Sports Coupe , 5 spd, s' AM/FM/cassette, \$6600/BO 238-4645 (South Easton).