

Mini News

News For The Employees of Data General

May 2, 1986

Data General Announces 32-Bit Tempest System



Electrical Engineer Don Kimball of Data General-Research Triangle Park, tests the newly-announced ECLIPSE MV/4000T, a 32-bit Tempest computer for government customers. Data General's Tempest products are accredited for purchase by the National Security Agency and appear on the U.S. Government's Preferred Product list.

Data General has introduced the ECLIPSE MV/4000T, a 32-bit Tempest computer for government customers. The ECLIPSE MV/4000T is compatible with the entire range of Data General's 32-bit MV/Family of systems.

Tempest is a National Security Agency program designed to protect classified computer data from electronic eavesdropping. Electrical impulses from computers can be read by remote locations unless "suppression devices," such as Tempest hardware are used.

Because it uses Data General's proprietary AOS/VS and industry-standard UNIX operating systems, the ECLIPSE MV/4000T computer can run all the software available for the ECLIPSE MV/Family systems including the CEO comprehensive electronic office system and ADE (Ada Development Environment) software.

The ECLIPSE MV/4000T, which can support 64 users, is capable of processing 700,000 computer

instructions per second. It can store up to eight megabytes of main memory and 500 megabytes of disk storage.

The ECLIPSE MV/4000T is designed to handle the computing needs of users in the Department of Defense as well as civilian government agencies that require Tempest systems, both in the United States and NATO countries.

Typical uses for the ECLIPSE MV/4000T include software development, particularly with Ada; large data base applications, command, control, communication and intelligence applications and office automation.

An ECLIPSE MV/4000T system configured with 4MB of memory, 146MB of disk storage and a tape drive is priced at \$123,886.

Along with the ECLIPSE MV/4000T, the company also announced the 6333T Tempest color dot matrix printer, which offers 200 characters-per-second (CPS) draft quality and 50 CPS near-letter-quality print speeds. The new printer, which can be used with any Data General ECLIPSE MV/Family computer, is priced at \$4,995.

First shipments of the ECLIPSE MV/4000T system and the 6333T printer will be this month.

Distribution Division Reorganizes

The Distribution Division has been reorganized in order to better direct Data General products through third-party channels of distribution. The division is now comprised of the Market Development, Marketing Support, Marketing Planning and Business Planning departments.

Market Development is responsible for reseller recruitment, channel development, marketing communications and marketing programs. John McGlone has been named director of the new group. Before joining the Distribution Division, John was director of the North American Sales Division's Dealer Sales groups. Prior to coming to Data General last June, he was vice president of sales at Beehive International. Before that, he was vice president of sales at Arrow Electronics. John holds a bachelor's degree in marketing from Fordham University.



John McGlone

Marketing Support will provide distributors with technical and marketing assistance. Led by manager Anne Peter, the group is composed of the Technical Support, Training and Information Services areas. Anne previously was the manager of Dealer Training and Technical Support within the Distribution Division.

Marketing Planning is responsible for identifying potential channels of distribution. Jim Hourihan has been appointed its manager. Previously, Jim was a marketing consultant within the division.

Business Planning, which continues to be led by Prafulla Sudame, will develop the division's business plans and forecasts.

John, Anne, Jim and Prafulla report to Distribution Division Vice President Cliff Bream.

"These changes will help the division in our new focus to be channel, rather than product, specific," says Cliff. "Channel responsibilities for the Distribution Division encompass most Data General reseller accounts including original equipment manufacturers (OEM), system suppliers, authorized system distributors and value-added system distributors (formally industrial electronic distributors). Functional responsibilities include strategies, terms and conditions, marketing support programs and product requirements for these channels."

"Resellers have always been an important channel for Data General. Consolidating these channels under a single division which has been reorganized to focus on growth opportunities including recruitment of additional resellers, should optimize our effectiveness over time. Ultimate success, however, will only be realized through close coordination with other divisions in Data General. This will be our highest near-term priority."

Marketing Agreement Provides Life Insurance Solutions

Data General will offer customers life insurance software solutions through a marketing agreement made with Incepts, Inc., a leading supplier of soft-

ware products and services to the life insurance industry.

Under the arrangement, Data General will offer Incepts' InTime for New Products, a software package that provides for the rapid, cost-effective introduction and administration of today's new life insurance products. It is a complete software system, including new business processing as well as all administrative and service functions for the life of a policy.

The software operates on Data General's ECLIPSE MV/Family of computers as well as IBM mainframe computers.

"Part of our plan to serve customers in the rapidly-changing insurance industry is to provide total and timely solutions," states Alan Law, director of Industry Marketing within the Information Systems Division. "We are exceptionally pleased to offer customers direct access to InTime through Data General's Independent Software Vendor (ISV) program because it was designed to meet the life insurance market's need to adapt to newly-developed and future products."

Data General's ISV program, established in 1983, currently includes many leading software vendors that provide a wide variety of solutions for banking, brokerage, insurance, medical, legal, manufacturing and cross-industry applications.

European Distribution Goes International

Data General's European Distribution Center (EDC) at Schwalbach, West Germany has joined International Manufacturing Operations. The European organization now reports to Howard Haythornthwaite, vice president of International Manufacturing Operations.

Currently, about 80 percent of the hardware that is shipped by the EDC to customers is produced at Data General's Far East Manufacturing facilities. The integration of the EDC with the Southeast Asian plants will facilitate the link between Asia and Europe for closer and more efficient communication.

Heading the EDC is Dr. Hans-Dieter Kurrle, who has been manager since July 1984. He joined Data General in 1978 as Systems Engineering country manager for Germany, serving briefly as acting Field Engineering country manager and Large Projects manager before joining Manufacturing. Prior to this, Dieter worked for Honeywell Bull and was an assistant professor at the University of Nuremberg. He holds a Ph.D. in economics from the University of Erlangen at Nuremberg.

"The European Distribution Center is a natural development as Data General expands its presence in Europe," says Dieter. "Since its opening in 1984,

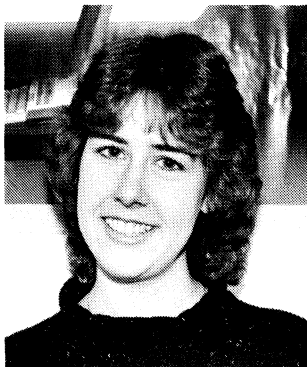
the center has been growing steadily. We now have about 35 employees working at the facility."

The EDC currently is responsible for shipping DESKTOP GENERATION systems, DATA GENERATION/One portable personal computers, DASH-2/One computers, peripherals and related software to Data General's European subsidiaries and Africa/Middle East distributors.

Director's Awards Given To Systems Development Employees

Diane Moore, Steve Vernick and Cindy Schlener of the Communications and Advanced Systems Development group recently were presented Director's Awards for their contributions to engineering projects at Data General.

Says Communications and Advanced Systems Development Director Don Tocher, "I am pleased to recognize these employees for their contributions to Data General. Their work has made a critical difference in key projects, and is representative of the many key efforts made by this group as a whole."



Diane Moore

Diane Moore of Communications Hardware received an award for her involvement in the development of the ECLIPSE MV/2000 DC computer. Her efforts were critical to the successful completion of a communications project.



Steve Vernick

Steve Vernick, also of Communications Hardware, received an award for his exceptional performance on the L-BUS Asynchronous controller and

L-BUS Synchronous communications options for the ECLIPSE MV/2000 DC computer. He simultaneously completed the development of both products.



Cindy Schlener

Cindy Schlener of Distributed Systems Software was recognized for her dedication and thorough technical work in the release of a revision of XTS.

Customer Documentation Tops The Field With Publications

Data General technical manuals recently won several awards, including "Best Of Show" for both printed and electronic documentation, in a competition sponsored by local chapters of the Society For Technical Communication.

The C Language Reference And Runtime Manual and its companion, *Language Summary*, took "Best Of Show," topping a field of about 275 entries. Writer Jennifer Robideau and Editor Donna Sullivan shared the honors. This is the highest award presented.

First-place Awards Of Distinction went to the *AOS/VS BASIC User's Manual*, written by Marll McDonald and edited by Jennifer, as well as the Swedish version of the CEO Decision Base Spreadsheet Processor User's Manual, written by Gunilla Levenson. The Italian language manual for the same product won an Award Of Merit for Gianna Ghera and Linda Manganaro.

A set of product summary brochures for the new ECLIPSE MV/Family line of processors, including the ECLIPSE MV/2000 DC computer and the ECLIPSE MV/20000 system, took a second-place Award Of Excellence. Honored for this effort were Lorraine Heath, Anne Pelon, Steve Cooper, Patricia Servais, Linda Foster, Lynn Martin, Carole Carnovale and Donna Merrell.

Three Data General publications received Awards Of Achievement. They are:

- *Using Data General RDOS On Your DESKTOP GENERATION System*, by Tom Rothschild and Donna Sullivan.
- *Data General Dealer News*, by Maureen Cary, Marcia Ciro and Bob Viator.

• *Resource And Program Guide*, by Susan Cadrin and Timothy Foley.

Data General also placed high in the Electronic Documentation category, with the *CEO Drawing Board HELP* earning an Award Of Excellence in the Reference category. This award went to Writer Julie Kling and Editor Marilee Sorotskin. In the Tutorial category, Kathleen Garner, writer, and Donna Sullivan, editor, received an Award Of Achievement for *Using AOS On DESKTOP GENERATION Systems*.

All documents were judged on quality of the writing, editing and graphics, as well as how well the document met its stated objectives. Electronic documentation also was rated on ease of use.

Westboro

Walk-In Service For Hypertension Screening

May is "High Blood Pressure Month" at Westboro. During this time, the Health Services department will provide hypertension screening for employees. Data General-Westboro employees are invited to have their blood pressure checked on any day during the following times:

14A Health Services -	9 a.m. - 11 a.m. 1 p.m. - 3 p.m.
14B Health Services -	11 a.m. - 1 p.m. 2 p.m. - 6 p.m.

Westboro Nurses Nancy Powers, Nancy Notarangelo and Helen Royal encourage all employees to take advantage of this hypertension screening.

High blood pressure is a silent, often mysterious killer. If hypertension is not controlled, serious cardiovascular complications may result. Stroke, congestive heart failure and kidney failure are just a few of the conditions evoked by hypertension.

High blood pressure is a leading cause of disease and death in this country. According to the American Heart Association, one in six adults has some elevation of blood pressure. Approximately half of those individuals with high blood pressure are not aware that they have it. The American Heart Association states, "High blood pressure can be detected by a simple test. Once diagnosed, effective treatment now is available. High blood pressure is treatable."

Let Security Know

Westboro employees who are having maintenance work done on their car should notify the Security department at extension 6100 if a tow truck will be removing their car from the parking lot.

Move Your Car

Second shift employees in Westboro should move their cars from the lower lot to the Building 14B Lobby parking lot after 5:30 p.m.

Milford

Spring Blood Drive

Data General-Milford is conducting its semi-annual blood drive on Wednesday, May 14 and Thursday, May 15, from 11 a.m. to 4:30 p.m. The Bloodmobile will be stationed in the visitor's parking lot. Employees may sign up in the cafeteria on Friday, May 9, and Monday, May 12, from 11 a.m. to 1:30 p.m.

The Red Cross in the northeast region must collect 350,000 units of blood to service more than 150 area hospitals. Data General-Milford's goal for the drive is 100 units.

Activities

1986 Outing Schedule

May 17	Riverside Park, Agawam, MA
May 31	Big Apple Circus, Boston, MA
June 6	Evening Harbor Cruise, Boston, MA
July 5	Picnic At High Meadow, Granby, CT
July 12	Canobie Lake Park, Salem, NH
August 2	Red Sox Game, Boston, MA
August 17	Concert At Great Woods, Mansfield, MA
September 13	Old Sturbridge Village, Sturbridge, MA

Employees wishing to attend any of the Data General outings should complete an outing form, available at the literature racks in the cafeteria. Tickets for an employee's first outing and the guest fee are only \$2 per person. Tickets for additional events and additional guests are \$16 per person. Attendance is limited at five of this year's outings, so send your requests in early!

Order Today For Riverside On May 17

For those of strong mind and stomach, the spinning barrel is just one of the more than 150 attractions at Riverside Amusement Park in Agawam, Mass. Kicking off the 1986 outing season, this event takes place on Saturday, May 17 from 9 a.m. to 10 p.m.

Employees will be served a continental breakfast upon arrival, with a chicken barbeque complete with all the fixins' for lunch. Throughout the day, rides such as the Cyclone, Monorail and Loop Coaster will be open for unlimited use. Younger children can be entertained in two big Kiddieland areas. The park also is complete with games of chance, miniature golf and gift shops.

To sign up for this outing, simply complete an Outing order form indicating your preference and mail it to: OUTINGS at Mail Stop C128 in Westboro. Be sure to enclose a home-addressed, stamped envelope with a check made payable to the Data General Activities Committee.

Ringside Seats For The Circus - May 31

Plan now to attend the Big Apple Circus event at Pier 3 in Boston (next to Anthony's Pier 4 restaurant) on Saturday, May 31 at 2 p.m.

This outing includes passes to the Boston Children's Museum, which is within walking distance of the circus. For tickets, complete an outing form and mail with a check and home-addressed envelope to: OUTINGS at Mail Stop C128 in Westboro.

Henry Mancini Plays At Worcester

Discount tickets to see the renowned composer Henry Mancini and a 60-member orchestra from Worcester have been made available to Data General employees through the Activities Committee.

On Tuesday, May 27 at Memorial Auditorium in Worcester, Mancini will perform a selection of award winning ballads and show tunes. Among his many accomplishments, Henry has received 20 Grammy awards, seven Gold albums and the Golden Globe award for songs including "Moon River," "The Days Of Wine And Roses," and "The Pink Panther Theme." The performance begins at 8 p.m.

Discount tickets are \$17 each. Send requests to MANCINI at Mail Stop C128 in Westboro. Checks should be made payable to the Data General Activities Committee. Be sure to include a stamped, self-addressed envelope.

Space Shuttle Radio Operations Presented In Video

The Data General Amateur Radio Club will show a video about amateur radio operations from the Space Shuttle on Tuesday, May 6 at 11:30 a.m. in

Guest Marketing. All interested employees are invited to attend.

In addition, radio club members wishing to help provide communications for the upcoming Dasher Road Race should send in a race entry form if they have not already done so.

Softball League Mixer Kicks Off New Season

The Data General Softball League holds its annual "Season Kick-Off Mixer," on Friday, May 16, at the Knights of Columbus in Ashland. The program, beginning at 7 p.m., will include a full schedule of softball games, refreshments, food and prizes. Music for everyone's listening and dancing pleasure will be provided by Dave Parker.

This is an opportunity for players, spectators and interested employees to socialize before the competition begins. There is no charge, and all Data General employees and their guests are invited. So, plan on attending and making this season a big "hit."

Data General Softball League Officers



The Data General Softball League begins its 1986 season with games starting on Monday, May 5, at the Knights of Columbus field on Route 135 in Ashland. This year's league officers are: (first row, left to right) Joe Sullivan, treasurer; Rick Morris, Westboro area commissioner; Dave Reese, chief scheduler; Donna Mattson, secretary; Kathy Linton, umpire coordinator; (back row) Paul Barker, Southboro area commissioner; Jim Shea, equipment manager; Dennis Bishop, league commissioner; Don Wisner, assistant scheduler; Bob Tarpy, public relations coordinator; John Kreel, special events coordinator. Missing from photo is Mike Hayes, Milford area commissioner; Rick Weir, assistant umpire coordinator; Steve Phaneuf, tournament director.

Road Race Entry Deadline Is Today

Today is the last day to enter the Dasher Road races scheduled for next Friday, May 9. Included will be a 10K foot race, a three-mile foot race, a 15.5-mile bike race and a biathlon. (Bike race participants are required to wear helmets.)

Cyclists will have the numbers 501 through 599 series; biathlon participants will use numbers in the 276 through 299 series; the three-mile runners will wear numbers 301 through 499, and the 10-kilometer runners will race with the 201 through 275 series. (Note: The numbering scheme is different from previous races.)

Eric Engberg, Race Committee chairman, urges all participants to check the number assigned to them to see that it is in the proper series. "Different races start simultaneously," says Eric. "The assigned numbers are the only way we have of determining the results."

Employees interested in serving as marshalls should contact Eric at extension 3221 in Westboro. Also, there will be a meeting of Race Day volunteers at 4 p.m. on Thursday, May 8 in Westboro's main cafeteria. The race is sponsored by the Data General Activities Committee solely for the company's employees.

Here Are The Race Routes

All races will begin at 5:15 p.m., from the rear of Building 14A in the east corner of the north parking lot.

Ten-kilometer and three-mile foot races: Starting line will be in the rear north parking lot. Runners will head off behind Buildings 14A and 14B, past the access road to 2400 Computer Drive, around and out the main driveway onto Computer Drive. Upon returning to Data General, all runners must enter the main driveway, run straight back to the rear of Building 14A, and finish where the race began. (See map for details.)

15.5-mile bike race: Bikers will start at the same time and the same place as the runners except bikers will proceed directly out of the driveway, past Building 14A and onto Computer Drive. From there, the route is as follows: left across Route 9; right onto Flanders Road; right onto Route 30, straight to the intersection of Route 30 and Route 85 into Southboro; right turn onto Route 85; right onto Flanders Road; right onto 46S to Computer Drive; to the main entrance of Data General; straight down driveway, past Building 14A, finishing race where the race began.

Biathlon: Combine the 15.5-mile bike race with the three-mile foot race.

Note: At 5:05 p.m., all outgoing traffic will be diverted through the 2400 Computer Drive-access road. At the start of the races (5:15 p.m.), all vehicles will be asked to stop until the racers have passed.

Employees should exercise caution when passing runners or bikers on the roads.

Dasher Record Holders

Event	Name	Time	Race
Men's 10K	Greg Yannekis	33:38	F85
Women's 10K	Jane Braley	39:16	F85
Master's 10K	Lloyd Slocum	34:25	S83
Women Master's 10K	Lila Naimark	46:30	S83
Men's 3M	Greg Yannekis	16:03	S85
Women's 3M	Donna Fox	19:01	F85
Master's 3M	Hiroyoshi Kinoshita	18:26	F84
Women Master's 3M	Anne Kennedy	23:39	F82
Men's Bike	Christopher Dehahn	36:34	S84
Women's Bike	Lisa Weidner	44:30	F83
Master's Bike	Eric Engberg	38:20	F85
Men's Biathlon	Camillo Davis	58:05	F85
Women's Biathlon	Karen Moussette	84:34	F83

Dasher Road Race Entry Form

(Please print.)

Name: _____

Location: _____ Mail Stop: _____

Extension: _____ Badge #: _____

Race Categories:

(Please check correct information.)

Under 35 35 or Over

Male Female

15.5-Mile Bicycle Race

3-Mile Foot Race

10-Kilometer Foot Race

Biathlon

Race Day Volunteer

T-Shirt Size:

(Please circle correct size.)

S M L XL

I represent that I am in good physical condition and sufficiently trained to participate in the Dasher Road/Bike Race. I am aware of the risks which are inherent to this activity, and I am participating at my own risk. In consideration of Data General Corporation and the Data General Dasher Road Race Committee accepting this application, I hereby assume any and all risks which may be associated with this activity and hereby waive and release all causes of actions and claims for damages of any nature whatsoever which I may have against Data General Corporation, its employees, directors, officers and agents arising out of or connected with my participation in the activity.

Signature: _____

Date: _____

Return this race form to DASHER RACE, Mail Stop E111 in Westboro no later than today. Incomplete forms will not be accepted. The Dasher Road Races are sponsored by the Data General Activities Committee solely for Data General employees.

MARKETPLACE

CARPOOL

Carpool, Brookline/Newton/Watertown to Webo needs rider, leaves from Newton Corner, Jim x6734.

Carpool, Plainville/North Attleboro to Westboro, 8:30 to 5, x4353.

Carpool, ride needed from Milford to Webo, 8:30 a.m. to 2:30 p.m., Gloria x2159.

Carpool, form or join from Worcester to Webo, 8:30 to 5, flex, Richard x1515.

Carpool, Existing carpool needs rider, Brookline/Brighton/Allston/Newton to Webo/Sobo, flex, Katz x7093.

YARD SALE

Saturday May 3, 10 a.m. to 3 p.m., 1404 Windsor Ridge, Westboro.

FREE

Oil Tanks, 2-275 gallon, you remove, 872-9194 (Framingham).

Trees For Firewood, 3 need to be taken down and hauled away, 842-0049 (Shrewsbury).

Guinea Pig, w/ cage to good home, 278-5066 (Uxbridge).

FOR RENT

Apartment, Worcester, Lake Ave, 2nd floor, avail May, \$500/mo + util, 798-3485 (Worcester).

Condominium, 2 bdrm, near beach & shops, \$350/wk, \$200/wk off, Dennisport, 435-4557 (Hopkinton).

Apartment, 2 bdrm, 2nd floor, parking, 18 mi to Webo, \$350/mo incl heat/water, 234-3521 (Whitinsville).

House, 3 bdrm, garage, no pets, refer required, \$800/mo, 473-3243 (Milford).

Chalet, Falmouth, on pond, slps 6, 7/7-7/14 \$335, 998-5485 (New Bedford).

Town House, 2 bdrm, garage, laundry, \$1000/mo, 891-1033 (Waltham).

Town House, 2 bdrm, laundry, walk to Green-Line, frpl, \$1000/mo, 277-4496 (Brookline).

Apartment, 2 bdrm, frpl, 5 mi to Webo, \$650/mo + utils, 485-9367 (Marlboro).

WANTED

Pool Table, good condition, 347-3909 (Sturbridge).

House, to rent, start July 1, Framingham/Southboro, 875-8366 (Framingham).

Babysitter, newborn infant, in my home, full time, Mon/Fri, 365-1400 (Lancaster).

Housemate, master bdrm w/frpl, no smokers/pets, near major routes, \$290/mo + utils, 393-2475 (Northboro).

FOR SALE

Girl's Bicycle, pink, 20", w/training wheels, \$35, 753-0338 (Worcester).

House, near Stowe, VT, garage, 10 acres, \$69,900, 473-5289 (Milford).

Items, Texas Instr TI-99; Zenith 19" color TV; Zenith 19"B/W TV; Zenith 25" color TV, Zenith console stereo; call for prices, 877-8111 (Framingham).

House, 4 bdrm, garage, large attic, \$179,000, 879-8325 (Framingham).

Tires, Goodyear, Polysteel radials, P/185/75 R14, AMC rims, 799-5472 (Shrewsbury).

Items, straw mat, 9' x 11', \$30/BO; tire, 2 ply Firestone B78-13 on rim, \$35/BO, 793-1969 (Worcester).

Polaroid Camera, 1-Step 600, still in box, \$20, 529-4277 (Upton).

House, 2 family, 4-4, 1-2 bdrm, garage, yard, renovated, \$133,900, 792-9063 (Worcester).

Items, child car seat; tricycle; woodstove fits in frpl; 443-5408 (Sudbury).

Kitchen Sink, w/metal cabinet, for cellar/apart/cottage, \$35, 872-9194 (Framingham).

Sailboat, Sunfish, w/window sail, \$900/BO, 655-1117 (Sherborn).

Kitchen Set, formica w/extra leaf, 4 padded brown naugahyde chairs, \$200/BO, 478-4751 (Milford).

Bicycle Frame, Austro Daimler Inter-10, 21", Reynolds 531 dbl-butted tubing, \$175, 393-2475 (Northboro).

Camper, 10 1/2' slide in for pickup, slps 4, \$2195, 754-3389 (Worcester).

Outboard Motor, 5-10 HP, 754-3389 (Worcester).

Zenith Color Television, 19", \$125/BO, 485-1304 (Marlboro).

Tires, 4 15" Uniroyal radial tires, \$235/BO, 881-2246 (Ashland).

House, 4 bdrm colonial, 2 1/2 bath, garage, 870-0085 (Westboro).

VIC-20 Computer, 2 ROM, games/cassettes, \$35, 881-3036 (Ashland).

Condominium, 2 bdrm, garage, laundry hookup, \$118,00, 481-0294 (Marlboro).

Keyboard, Yamaha Portatone PS6100, \$1050, 765-0802 (Cumberland RI).

Condominium, 2 bdrm, 278-5066 (Uxbridge).

AUTOS

'71 **Volkswagon Super-Beetle**, snrf, \$350/BO, 244-2266 (Newton).

'73 **Dodge Dart Swinger**, slant 6 auto, PS, AM/FM/Cassette, spare parts for eng, 48K mi, \$400 w/stereo, \$350 without, 478-2668 (Milford).

'74 **Cadillac**, extras, new brakes/electrical fuel system, \$1500/BO, 478-4751 (Milford).

'74 **Pontiac Catalina**, low mi, regular gas, BO, 874-5238 (Westminster).

'78 **Scirocco**, 4 spd, alloy wheels, \$2200/BO, 562-7851 (Hudson).

'78 **Travel Trailer**, 25' Free Spirit bunkhouse model, many options, \$6000/BO 435-5474 (Hopkinton).

'78 **Ford Fiesta**, 63K mi, 277-4496 (Brookline).

'79 **Honda Twinstar Motorcycle**, 175cc, 9K mi, 80 MPG, \$500, 393-8861 (Northboro).

'79 **Volkswagon Rabbit**, 2 dr, custom, \$1750/BO, 244-2266 (Newton).

'79 **Mercury Bobcat**, 4 spd, new snow tires, AM/FM, \$1000, 365-5054 (Clinton).

'79 **Mercury Capri**, 2 dr hatch, snrf, PS/PB, \$950, 764-8618 (Charlton).

'80 **Volkswagon Rabbit**, AM/FM/cassette, \$1800/BO, 533-4656 (Medway).

'80 **Kawasaki LTD 1000**, blk/silver, \$1800, 839-9930 (Grafton).

'80 **Ford Pinto Wagon**, 31K mi, 4 cyl auto, recent battery, shocks, exhaust, \$2000, 756-0589 (Shrewsbury).

'80 **Mercury Cougar XR7**, loaded, 302 ci, Chapman lock, \$3300, 791-1283 (Worcester).

'81 **Camero**, V6, 58K mi, AM/FM, Michelin radials, \$4300, 839-9387 (Grafton).

'81 **Plymouth Horizon**, 4dr, 4 spd, 61K mi, new battery/starter & inspection sticker, \$1750, 877-3428 (Framingham).

'82 **Dodge Omni 024**, 2 dr hatch, 45K mi, \$2500, 481-2923 (Marlboro).

'83 **Cutlass Supreme**, 27K mi, loaded, maroon, \$7500, 481-1764 (Marlboro).

'84 **Toyota Supra**, 5 spd, loaded, snrf, low mi, \$12,900, 485-4095 (Marlboro).

'85 **Ford Escort**, 4 dr, stereo, 19K mi, \$7500, (401)765-4775 (North Smithfield, RI).

'85 **Pontiac Firebird**, 5 spd, spoiler, rear dfrst, AM/FM, 10K mi, \$9000, 366-8426 (Westboro).

Hours

Westboro Cafeteria, full breakfast, 6:30 a.m. - 8:30 a.m.; lunch, 11:30 a.m. - 1:30 p.m.; open from 6:30 a.m. - 3:00 p.m. for beverages.

Pizzeria, serving from 10:00 a.m. - 2:00 p.m.

Pumpernickel's Deli, Coffee & pastries, 6:30 a.m. - 7:30 p.m.; full breakfast, 6:30 a.m. - 10 a.m.; deli lunch, 11 a.m. - 2 p.m.; Take-out, 3 p.m. - 6:30 p.m.; dinner, 5 p.m. - 7:30 p.m.

Milford, full breakfast, 6:30 a.m. - 8:30 a.m.; lunch, 11:15 a.m. - 1:15 p.m.; supper, 5:30 p.m. - 7:30 p.m.; open from 6:30 a.m. - 3:15 p.m. for beverages.

Southboro, full breakfast, 6:30 - 10:00; lunch, 11:15 - 1:00; open from 6:30 - 3:00 for beverages.

MINI NEWS

All ads must be submitted in writing and include employee's name, home phone and extension number. Ads will be stamped with the time and date as they are received and will run on a first come basis. Send ads to Lauren Sasseville, MS A-235 or GEO SASSEVILLE L:MSIS03