

Mini News

News For The Employees of Data General

November 8, 1985

Business Group Reorganizes

Data General's Business Group has been reorganized to better offer total systems solutions to markets with high growth potential. Senior Vice President Bob Miller states that the changes "will significantly improve Data General's ability to become one of the major systems suppliers of this decade."

The changes include: the creation of a new organization, Business Group Marketing; the refocusing of the Business Group Planning function; and the renaming of the Desktop Division to Distribution Division. The three organizations report to Senior Vice President Bob Miller.

Business Group Marketing, headed by Vice President Dave Lyons, will draw together the industry strategies, product line strategies, business planning and product requirements, forecasting, pricing and life cycle management for the Business Group.

Within Business Group Marketing are: two newly-focused business divisions; a new Product Marketing Division; and an expanded Marketing Communications function.

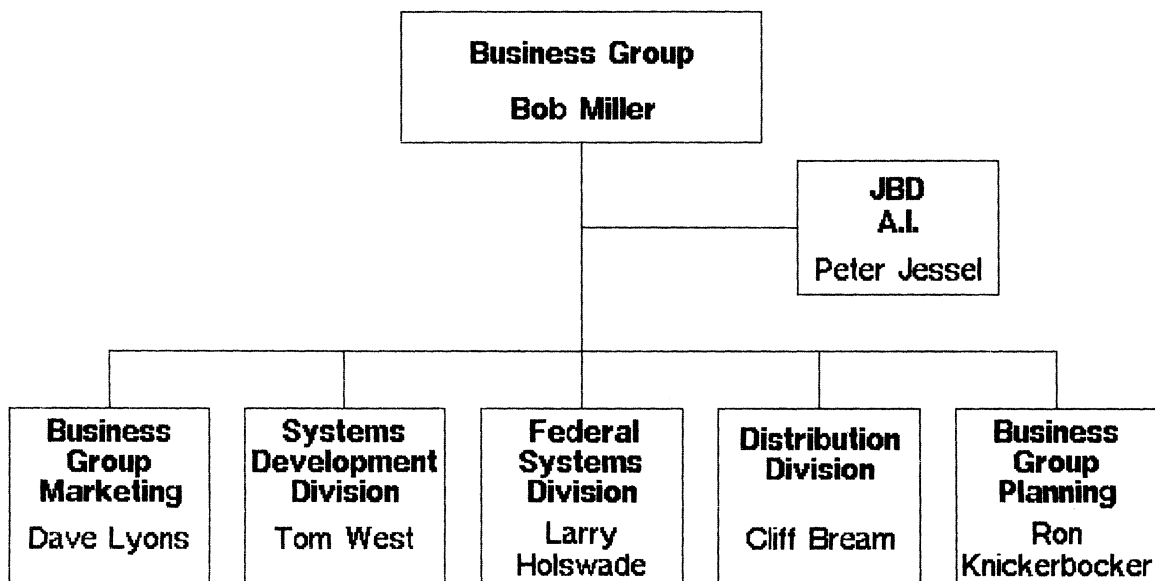
The new **Product Marketing Division**, headed by Director John Scanlon is responsible for product management, product requirements, product business plans, systems marketing and competitive analysis.

The Denver-based Technical Products Division is renamed the **Technical Systems Division** to reflect its more focused responsibilities for industry marketing and support. The division is headed by Vice President and General Manager Don McDougall.

The **Information Systems Division (ISD)**, with Dave Lyons as acting head, is responsible for Fortune 2000 commercial markets, market support, market business planning, development and industry marketing in ISD's assigned market area.

An expanded **Corporate Marketing Communications** function, headed by Director Dennis Byron will focus on advertising and trade shows.

The **Business Group Planning Operation**, headed by Ron Knickerbocker, will coordinate the Group's business management planning process, including the product calendar, price lists, operating plan forecasts and management controls. Ron reports to Senior Vice President Bob Miller.



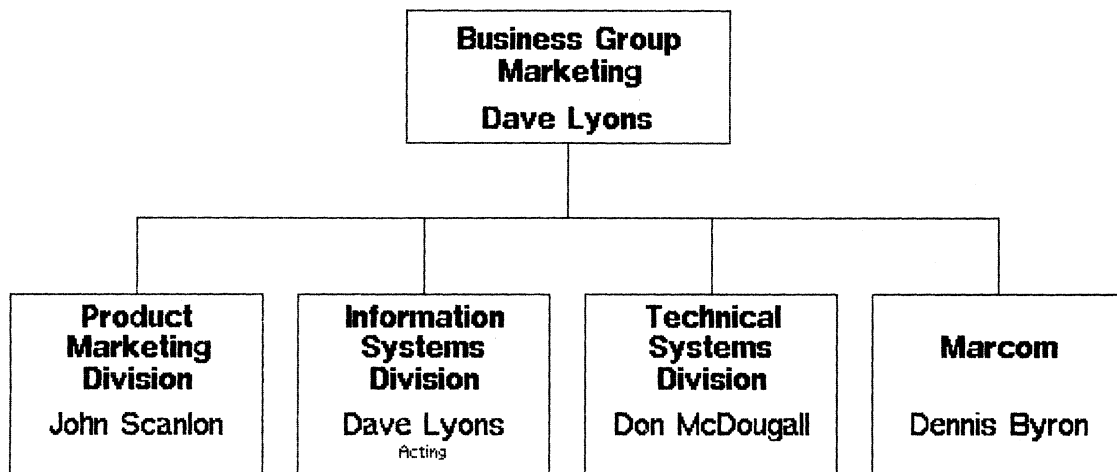
The former Desktop Division, headed by Vice President and General Manager Cliff Bream, is renamed the **Distribution Division** to reflect its broader responsibilities for marketing computers to small and medium businesses through third-party channels of distribution.

There are no organizational changes in the Systems Development Division, headed by Vice President Tom West, and the Federal Systems Division, headed by Vice President Larry Holswade. The functions of Japanese Business Development and Artificial Intelligence will be headed by Director Peter Jessel.

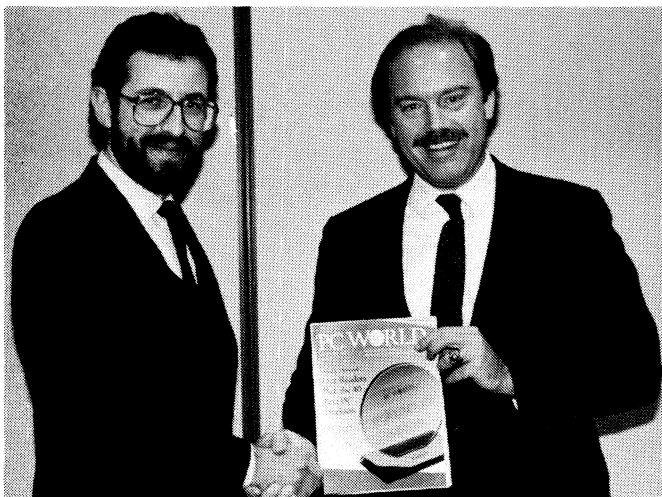
According to Bob Miller, "These changes are a natural evolution in our approach to our markets and our systems technologies. The changes will benefit the company in several ways.

"First, the business divisions gain a better focus on their assigned markets, permitting them to concentrate on total integrated systems marketing activity in each industry. The changes allow the business divisions to launch industry marketing programs which are the next logical steps in reaching our markets.

"Second, more effective product marketing and product requirements will result by having these functions accomplished in one place. The Business Group Marketing Division will act as one interface for Manufacturing, Engineering, Finance and the field divisions. One operation will be accountable for product marketing and requirements."



DATA GENERAL/One Wins Top Press Recognition



Harry Miller, editor-in-chief of PC World magazine, (left) congratulates Cliff Bream, vice president of the Distribution Division, for the magazine's readers' poll selection of the DATA GENERAL/One personal portable computer as the outstanding laptop computer.

The DATA GENERAL/One portable personal computer has been chosen as the outstanding laptop computer in PC World magazine's annual readers' poll. More than 50 percent of participating readers voted in the laptop category, judging competing portable computers on the basis of functionality, design and innovation.

The DATA GENERAL/One received the highest percentage of votes in any of the hardware categories covered by the poll. Representing a top industry honor, awards in various categories are presented each year to 40 computer hardware, software and peripheral products voted to be the best in their category by many of PC World's 300,000 readers.

Harry Miller, PC World editor-in-chief, congratulated Data General at a recent award presentation for having designed and marketed a product that "truly qualifies as world class."

Says Harry, "Through this poll, the readers have voted by a wide margin the DATA GENERAL/One personal portable computer as the best laptop computer. With sophisticated and effective solutions such as the DATA GENERAL/One, the company demonstrates that it understands and successfully meets the needs of its end users." Accepting the award on behalf of Data General was Cliff Bream, vice president of the Distribution Division.

Data General Signs IHV Agreements

Adds Bar Coding, Machine Vision Tools, And Group Technology Packages

Data General has signed independent hardware vendor (IHV) agreements with Intermec Corporation and View Engineering, Inc. The company also announced the availability of manufacturing applications software packages from OIR/Organization for Industrial Research.

Intermec is a leading developer of bar coding equipment. Bar code technology is used for numerous manufacturing operations, including data collection, inventory control, labor reporting, work-in-process tracking, and file tracking. These provide a highly accurate, integrated method of data entry into a Data General superminicomputer-based system. Intermec's revenues in fiscal year 1985 were \$40 million.

View Engineering, Inc. is a \$15 million developer of machine vision equipment for industrial, scientific and technical applications. Used for computerized visual inspection and measurement in a wide range of manufacturing processes, these systems represent significant tools for quality control and assurance applications. The company's vision systems interconnect to Data General's full line of ECLIPSE MV/Family superminicomputers, engineering workstations, DESKTOP GENERATION microcomputers and the DATA GENERAL/One portable personal computer, through an RS-232 interface.

Data General's Independent Hardware Vendor program is designed to make available integrated, specialized third-party hardware from the IHV for use with Data General computer systems. Through this program, the company makes available a wide range of product solutions from leading suppliers of computing equipment. The program complements Data General's Independent Software Vendor (ISV) program, which makes available from ISVs approximately 600 applications software packages for industrial, technical and scientific uses.

Also available for Data General customers are Group Technology applications software from OIR/Organization for Industrial Research. The OIR

packages include: OIR MultiClass Classification and Coding, MultiTreeve Design Retrieval, MultiCapp Computer Assisted Process Planning, and MultiGroup for Group Technology analysis and standardization. OIR is the world leader in the development and implementation of Group Technology-based CAD/CAM systems.

Industrial Automation Solutions On Display



Employees from Data General's Technical Systems Division, North American Sales Division and Special Systems Group recently participated in the 1985 Instrumentation Society of America Conference, held at the Philadelphia Convention Center. Attendees learned about industrial automation solutions for manufacturing and process control. Pictured above, Paul Kiley of Special Systems (right) demonstrates Data General's industrial display terminal, designed for factory environments where systems are exposed to extreme heat, dampness and dust conditions.

People

In Human Resources...

Bailey Allard has been named manager of Management and Organizational Development (M.O.D.) for the North American Sales Division (NASD) reporting to Kathy Curran, director of NASD Human Resources. In this position, Bailey is responsible for the development and delivery of management and professional development programs for NASD employees.

Bailey joins NASD Human Resources after two-and-one-half years with Marketing Education, where

she most recently was manager of Professional Development.

In Systems Engineering...

Bruce Lutz has been promoted to Branch Systems Engineering manager for the Data General-Boston Branch, reporting to Regional Systems Engineering Manager Jim Hope at the Wellesley facility.

With Data General since 1978, Bruce most recently was the NYNEX Systems Engineering project manager. Prior to that, he worked as a senior systems engineer and also as a systems analyst at Data General-Westboro. Bruce holds a BS in mathematics from Bates College.

Safety Slogan Of The Month

"Rain, sleet, ice or snow - be prepared, go slow!"

To see or not to see, winter is just around the corner. Don't be a "peep-hole" driver. What you can't see, can hurt you!

Before taking to the road from home or work, remove all the snow and ice from your car windows. Safe drivers should always be prepared for winter hazards and drive defensively. When weather conditions change, expect the unexpected. Extra care will get you there ..safely!

Milford

On-Line Information Service Implemented

Data General Field Engineering has implemented a new On-Line Information Service (OIS) for its more than 400 DESKTOP GENERATION computer and DATA GENERAL/One personal portable computer dealers nationwide.

The new Data General OIS features a simplified menu listing separate data bases for DESKTOP GENERATION systems and DATA GENERAL/One personal portable computers. In addition, dealers may access OIS through a wide variety of low-cost local telephone numbers such as "TimeNet" or "Telenet".

OIS is available 24-hours-a-day with up-to-the minute product, support and maintenance information on DESKTOP GENERATION and DATA GENERAL/One systems including: dealers newsletters; regularly-updated downline load software patches; tips and techniques; technical information; compati-

bility issues; hardware issues reporting; Software Trouble Report submission (STR); a dealer bulletin board; management and training notices; and software directory.

A major feature of OIS is DG TALK, an interactive bulletin board facility, which enables the user to submit queries to Data General product specialists. DG TALK allows users to submit both STRs and hardware issues while on OIS, and receive responses within 48 hours.

"Data General's new On-Line Information Service is one of the most comprehensive videotex products available today," says Tony Nicoletti, vice president of Field Engineering Support. "In providing our dealers an enhanced OIS, which will soon be available to end users, we are continuing the company's aggressive policy to sharpen the leading edge in the marketing and technology of DESKTOP GENERATION and DATA GENERAL/One computer systems."

Demonstrations of OIS will take place at the Data General Dealer Council meeting on Monday, November 18 and Tuesday, November 19, and at the Fall Comdex show, Wednesday, November 20 through Sunday, November 24. Both shows will be held in Las Vegas.

Blood Drive At Milford

Data General-Milford recently held its fall blood drive, sponsored by the American Red Cross. Employees responded with a total of 66 units of blood collected. Special thanks to all those for giving "the gift of life."

New Courses Teach CLI Macros And LISP

Educational Services has scheduled two new courses at the Education Center, 2400 Computer Drive. Both courses are open to Data General employees upon prior approval of their supervisor. To enroll, or for more information, call Central Registration at extension 4079 in Westboro.

The new courses are:

- **CLI Macros (S161E)**, a two-day course for system users, programmers, operators and managers, teaches how to write and interpret CLI macros. Attendees should have at least six months experience with AOS or AOS/VS and familiarity with a text editor; scheduled for Thursday, November 14 through Friday, November 15.
- **LISP: A Programmer's Guide (SM501)** is a five-day Technical Seminar that teaches the fundamentals of programming in COMMON LISP, the programming language associated with many Artificial Intelligence

(AI) applications. This seminar is designed for programmers who have experience with high-level languages, and who wish to learn more about working with applications involving AI; scheduled for Monday, November 11 through Friday, November 15.

Hardware Maintenance Courses Scheduled

The following hardware maintenance courses have been scheduled by Educational Services and are offered to Data General employees. These classes teach repair and maintenance techniques for various models of Data General processors, peripheral devices and systems.

All courses are held at the Hardware Education Center at 2400 Computer Drive. Courses vary in length; however, most are five days long.

For more information or to enroll, call Central Registration at extension 4079 in Westboro. Your supervisor's approval is required prior to registration.

Start Date	Course Number	Course Title
Nov. 18	H100	Data General Computer Architecture
	H148	ECLIPSE MV/4000 Field Maintenance
	H180	ECLIPSE S/280 Field Maintenance
Nov. 22	H123	DATA GENERAL/One Field Maintenance
Dec. 2	H100	Data General Computer Architecture
	H101	Diagnostic Operating System User
	H122	DESKTOP GENERATION Field Maintenance
	H203	DISC 10 MB (6045 Series)
Dec. 3	H168	ECLIPSE MV/10000 Field Maintenance
Dec. 5	H221	DASHER D200 series, D400 series Field Maintenance
Dec. 9	H217	6125 Mag Tape Drive Field Maintenance
	H236	6236/6237 Disc Field Maintenance
Dec. 11	H221	DASHER D200 series, D400 series Field Maintenance
Dec. 12	H123	DATA GENERAL/One Field Maintenance
Dec. 16	H100	Data General Computer Architecture
	H121	ECLIPSE S140/NOVA 4 S/X Field Maintenance

Questions On Stock? Ask Employee Shareholder Services

"Employee Shareholder Services" is the new name for the Stock Option department located at Data General-Westboro, Mail Stop F239. According to Manager Sue Singer, the new name reflects the scope of the department's involvement in employee stock activity such as purchases of stock through the Employee Stock Purchase Plan and purchases through the exercise of stock options.

The group's responsibilities include:

- Employee stock purchases through the payroll deduction plan.
- Employee stock purchases through the exercise of stock options.
- Interface with Data General's transfer agent, Morgan Guaranty Trust Co. of New York.
- Tax information as it pertains to the purchase or sale of Data General stock.

Stock Purchase Plan

For the Employee Stock Purchase Plan, Employee Shareholder Services handles only the issuance of stock. If you do not receive stock as expected in February or August, you should contact Employee Shareholder Services.

All other inquiries regarding the Stock Purchase Plan are handled through corporate or local Benefits departments. Additionally, Payroll departments usually have authorization forms available to begin, stop or change payroll deductions in accord with the provisions of the plan.

Stock Options

Over the years, Data General has offered stock options to key employees as rewards for their achievements and as an incentive for continued contributions to the company. Stock grants, exercising of options and issuance of stock are handled through the Employee Shareholder Services department.

Stock options are exercised through payment by certified personal check, bank check or Data General stock, which is at least 90 days old and free of any restrictions against sale.

Employees may trade in Data General stock as payment toward a new purchase of stock. Your shares will be purchased from you at the Fair Market Value on the day of your new exercise which is the date Employee Shareholder Services receives your intent to exercise.

Any taxes due when stock options are exercised may be paid through personal check.

Whom To Contact

- A - K Stock Option Exercises:
Nancy Bissett, extension 5622 in Westboro.
- L - Z Stock Option Exercises:
Leeann Pelissier, extension 5602 in Westboro.
- Stock Swaps, Incentive Sales Billings:
Linda Sandstrom, extension 6620 in Westboro.

Savings And Investment

Questions on shares which are allocated through company contributions to the Savings and Investment Plan and distributed only upon termination or retirement, may be directed to Sandra Garraway at extension 4558 in Westboro.

Address Changes

When Data General employees own Data General stock, all matters involving the stock are controlled through a stock transfer agent. Also, any name or address changes made in the official company records through processing an Employee Profile Document (EPD) do not affect stock.

Therefore, all address changes on stock must be handled directly by the transfer agent to ensure that you will receive all shareholder mailings including the annual meeting notice and proxy material.

If you should lose a stock certificate, the Estoppel department of the transfer agent must be notified.

Data General's transfer agent is:

Morgan Guaranty Trust Co.
Operations Department
30 West Broadway, New York, NY 10015

Employee Shareholder Services regularly updates employees on stock information through the ***Mini News***, in addition to Purchase Plan and Stock Option information mailed to participants' homes.

Benefits

Savings And Investment Plan Update

Whether you are currently participating in the Savings and Investment Program, or planning to enroll for January 1, you should be aware of recent modifications and upcoming plan deadlines. For example, the Guaranteed Income Fund rate for 1986 has been set; the procedure for obtaining a loan has been modified to shorten the processing time; and the fund transfer provision has been modified to allow more flexibility.

New GIC Rate

1986 contributions to the Guaranteed Income Fund will be invested in a contract with the Metropolitan Insurance Company at an effective annual interest rate of 10.85 percent. However, since the 1986 contributions will be pooled with those from previous years, participants will actually receive a slightly higher rate of at least 11.5 percent.

New Loan Rate

During 1986, the interest rate on new loans from the Savings and Investment Plan will be 12.5 percent.

Fund Transfer Update

Participants in the Savings and Investment Plan can transfer all, or part, of their account balance from one investment fund to any other investment fund(s) at the start of any calendar quarter BUT not more than once every six months. In the past, fund transfers could only be made on January 1.

If you would like to transfer funds for the calendar quarter beginning January 1, 1986, you must complete a Fund Transfer Form and return it to the Benefits department in Westboro no later than Tuesday, December 10. All transfers will become effective January 1, 1986.

The transfer of funds will not affect your future contributions. If your intention is to have all contributions after January 1 directed to a different fund(s) you must submit an updated enrollment form to the Benefits department no later than Monday, December 16.

Fund Transfer Forms are available from your Personnel representative or the Corporate Benefits department in Westboro.

Loan Processing Update

Recent modifications to the loan processing procedure have reduced the length of time it takes for you to receive your money.

Effective immediately, the required Promissory Note will be signed and submitted along with the Loan Application form. Also, the amount of the loan you can request will be limited to whatever your account balance is on the last day of the month preceding the month in which you apply for the loan.

Loans will continue to be processed on the last working day of the month, but instead of distributions being made at the end of the following month they will be made in two weeks.

Loan applications and Promissory Notes are available from your local Personnel or Benefits department.

Enrollment And Change Deadlines

Monday, December 16 is the deadline for submitting all new enrollments and quarterly changes to the Savings and Investment Plan. The enrollment forms (used for both new enrollments and changes) must be returned to your local Benefits department by Monday, December 16. All enrollments and changes will become effective January 1, 1986.

New Hire Information

If you are a new employee at Data General, and will have completed 90 days of employment before January 1, you will be eligible to join the Savings and Investment Program effective January 1, 1986.

A packet of descriptive material will be mailed to your home during the week of November 16. If you do not receive this information contact your Benefits administrator or Personnel representative.

After reading the information, simply complete the enrollment form and submit it to your Benefits or Personnel representative. If you decide not to contribute to the program at this time, you must still complete an enrollment form to provide Benefits with the name of your beneficiary for the company contribution.

If you have any questions regarding the program, contact the Benefits department in Westboro at extension 4524.

Employee Investment Information

(As of October 31, 1985)

Savings & Investment Program

Guaranteed Fund (Current Return) 12.1%
Balanced Fund (Share Value) \$12.17
Equity Fund (Share Value) \$10.41
Loan Interest Rate 13.5%

Activities

Ewoks On Ice At Centrum

This year's Ice Capades show features guest star Scott Hamilton, 1984 Olympic champion along with the Ewoks. What is an Ewok? Catch the show and see for yourself. Data General has discount tickets available for Saturday, December 7 at 3 p.m. Tickets are \$7.50 each.

Send your requests to: ICE CAPADES, Mail Stop D232. Checks must be made payable to the Data General Activities Committee. Also, be sure to include a self-addressed stamped envelope. Tickets are limited so order early!

Ring In The Holidays

Enjoy an evening of dining and dancing at the Data General Activities Committee-sponsored holiday party, to be held at the new Westboro Plaza Hotel on Saturday, December 7 from 7 p.m. to

midnight. A dinner buffet will feature roast baron of beef; broiled scrod and chicken piccata along with a variety of salads, vegetables and desserts.

Tickets are \$17 each. For tickets, send a check made payable to Data General Activities Committee and a self-addressed stamped envelope to CHRISTMAS PARTY, Mail Stop D232 in Westboro. You may reserve a table of 10 by sending the request along with an order for 10 tickets.

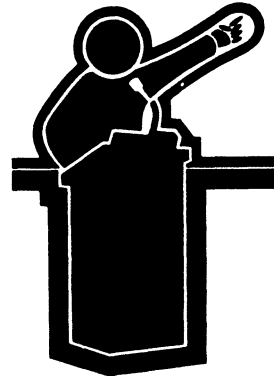
Any attendee who wishes overnight accommodations may call the hotel directly for reservations. The corporate rate at the Westboro Plaza is \$47 per night. Reservations must be made before Monday, November 25. Employees must have a Data General badge at check in, and are responsible for their own charges.

Enjoy The City At A Discount

The latest edition of the "The City," Boston discount coupon book is now available. If you would like to receive a copy, send a large self-addressed interoffice envelope indicating your mail stop to THE CITY, Mail Stop C128 in Westboro. You will receive your book in one to two weeks.

Toastmasters Open House Next Wednesday

Speak Up and Get Ahead



Toastmasters can help you to think on your feet:

- Refine presentation skills
- Develop polish
- Practice and become a pro

Come to the Toastmasters Open House on Wednesday, November 13 at noon in Guest Marketing Room A. As guest speaker, Cathy Ryan, regional officer of Toastmasters International, will speak on "Four Ingredients of Great Leadership."

Lunch will be provided at the meeting. Interested employees should respond to Chris Pitcher at extension 5518 or Loni Pecker at extension 5533 in Westboro by Friday, November 8.

MARKETPLACE

LOST

14K Gold Pearl, w/two diamond chips, Holly x2018.

FREE

Newspapers, for wood or coal stove, you pick up, 234-3521 (Whitinsville).

Kittens, born Sept 13, 1 male, all black; 1 male, black w/double paws; 1 female, black w/white, orange & brown spots, will bring to DG, 799-4282 (Worcester).

FOR RENT

White Mts Chalet, 3 bdrms, 2 full baths, furnished, frpl, \$275/wk incl util, 696-6065 (Milton).

Apartment, 2 bdrm, near T, Rt 495, shopping center, new appliances, pool, \$750 incl heat, 966-0316 (Bellingham).

Ski House, Jackson NH, slips many, week or days, 443-5408 (Sudbury).

Apartment, 5 rms, 2-3 bdrm, 1st flr, recently renovated, off street parking, \$675 + util, 481-0132 (Marlboro).

Apartment, 4 rms, 1 bdrm, 1 1/2 baths, 2nd flr, \$525 + util, 481-3251 (Marlboro).

WANTED

2 Twin Size Waterbeds, 829-3440 (Holden).

Roommate, to share 2 bdrm apt, Westboro center, \$250/mo, incl util, 473-9511 (Milford).

Classical or Folk Guitar, 393-6031 (Northboro).

Drum Set, in good condition, suitable for beginner, 393-9728 (Northboro).

2 Sash Weights, for double-hung windows, 429-1773 (Holliston).

Roommate, to share 2 bdrm apt, 15 min to DG, \$185/mo incl elec & heat, 842-0043 (Shrewsbury).

Housemate, to share country home, \$265+, 393-2475 (Northboro).

Roommate, to share 4 bdrm house, 10 min to Milford, 20 min to Webo, \$230/mo util incl, 528-3948/376-2110, (Franklin/Millis).

FOR SALE

Items, stove, free standing, conical, white enamel open hearth stove, 10 ft chimney, \$150; white awning windows, 8 4'8" h x 4" w, \$30 ea; 20 pane wood colonial windows, 15 4'8" h x 2'8" w, w/matching storms, \$40 ea, 485-9267 (Southboro).

Commodore 64 Software & Hardware, also computer supplies, 842-7145 (Shrewsbury).

Teknika Amp, w/matching tuner, 2 JVC cassette decks, pair of EPI speakers, \$500/BO, (401) 765-4216 (Woonsocket, RI).

Tires, 2 FR78-14 General radial snow tires, mounted on 5 lug GM rims, \$50, 485-8335 (Marlboro).

Membership, to Westboro Plaza Hotel Health Club, exp 6/17/86, nautilus equip, aerobics, pool, sauna, jogging track, \$170, 366-2372 (Westboro).

Membership, Futura Health Club in Framingham, nautilus, aerobics, pool, raquetball, exp 7/86, 891-6183 (Waltham).

Items, EPI Speakers, model 200B, 10" x 17" x 33", \$100/pr; peach love bird, w/large cage & accessories, \$50, 852-2134 (Worcester).

Items, '75 Venture 21' sloop, '71 6HP Evinrude motor, 5 gal tank, '84 Cox super loader-galv trailer, main sail, 110 Genoa, compass, pot pak, dock fenders, mooring line, fire exting, flair kit, elec bilge pump, hand opp bilge pump, 4 life jackets, floatation seat cushions, swing keel 400 lbs, Danforth anchor, \$4400, 755-3214 (Shrewsbury).

Round Bird Cage, 429-5706 (Holliston).

Brooks Leather Motorcycle Jacket, black, size 40, \$50, 339-3965 (Mansfield).

Luggage Rack, portable car-top rack, 481-6822 (Southboro).

Snow Tires, radial, P185/80R-13, \$85/pr, 862-5766 (Lexington).

14" Studded Snow Tires, mounted on GM rims, \$50/pr, 798-2087 (Worcester).

Weights & Weight Bench, Leg Lift - 170 lbs, \$40/BO, 443-2632 (Sudbury).

Bicycle, BMX Redline PL-20, Shimano DX cranks & pedals, Ukai rims w/Suzie sealed hubs, Robinson handlebars, 756-5079 (Worcester).

Items, Electone organ, \$450; Zenith 19" color TV, \$150; ladies' double dresser, \$75; student desk, \$25, 842-8791 (Shrewsbury).

House, 9 rm cape, 2 1/2 baths, workshop, pool, near Rt 495, shopping & schools, nicely landscaped, fenced, many extras, \$159,900, 473-7842 (Milford).

Franklin Wood Stove, Atlanta stove works, w/screen, grill, stovepipe, \$90/BO, 429-1773 (Holliston).

Items, Woodstove, fits in fireplace, like new; child car seat & other child items, 443-5408 (Sudbury).

Items, Skis, 165 cm w/Tyrolia bindings, poles, \$50; men's ski boots, size 9 1/2, \$15; weight bench, w/leg lift, \$25, 234-7179 (Whitinsville).

Tire Rims, 15" - 5 lugs, 14" - 4 lugs, 473-4347 (Milford).

Snow Tires, 2 Dunlop max trak grip steel belted w/w radials, GR78-15; 2 Firestone Towne & Country steel belted w/w radials, BR78-13; 2 w/w snow tires, D78-14; 1 trunk inflatable spare tire, never used, BO, 792-9063 (Worcester).

Pool Table, regulation size, w/sticks, ball rack, table brush & hanging rack for sticks, one piece slate bed w/ball returns, 473-7842 (Milford).

Glenwood Electric Range, w/ventless hood, (401) 765-4744 (Woonsocket, RI).

Roper 36" Gas Stove, w/brand new log, BO, 473-2441 (Milford).

Toys, Child's stove & refrigerator, \$39/BO; child's bouncing horse, \$23/BO; Barbie, Ken & clothes, \$5; puzzles & games for young child, BO; girl's 16" bike, \$33, 877-9030 (Framingham).

AUTOS

'70 Cutlass, needs body work, \$250, 366-6554 (Westboro).

'73 Dodge Mobile Camper, Low mi, BO over \$3000, 485-2972 (Marlboro).

'74 Subaru GL, 2 dr coupe, new tires, shocks, brakes, \$450/BO, 376-2110/528-3948 (Millis/Franklin).

'75 AMC Pacer, 77K mi, auto, PS/PB, AM/FM, new tires/muffler, rebuilt transmission, \$600, 872-6026 (Framingham).

'75 BMW 2002, 74K mi, \$4500, 263-2983 (Acton).

'76 Monte Carlo, landau, stereo, AC, 68K mi, \$2395 (401) 769-6036 (Woonsocket RI).

'77 Dodge Monaco, auto, PS/PB, 82K mi, \$500/BO, 429-5723 (Holliston).

'78 Firebird, AM/FM/cassette, PS/PB, AC, V6, \$2700, 473-2074 (Hopedale).

'78 Renault Le Car Deluxe, needs major eng work, \$200/BO, 332-8289 (Newton).

'80 Firebird, 6 cyl auto, AC, AM/FM/cassette, rear defrost, 50K mi, \$5000, 234-8451 (Whitinsville).

'80 Chevrolet Impala, 69K mi, AC, PS/PB, AM/FM, vinyl roof, cruise control, \$3850, 476-2877 (Douglas).

'80 Mercury Cougar XR7, 302 ci, loaded, \$3900/BO, 842-5143 (Shrewsbury).

'81 Chevrolet Chevette, 2 dr coupe, AM/FM, 4 spd, 70K mi, \$1500, 787-1436 (Allston).

'81 Plymouth Horizon, 4 dr, hatch, 4 spd, AM/FM, front wheel dr, 58K mi, \$2400, 877-3428 (Framingham).

'81 Toyota Starlet, red, 5 spd, AM/FM/Cassette, 50K mi, 38 mpg, \$3000, 485-7129 (Marlboro).

'81 Oldsmobile Omega, 4 spd, 4 cyl, 50K mi, \$2750, 366-5770 (Westboro).

'81 Firebird, white w/tan leather interior, 66K mi, PS/PB, tilt wheel, rear defrost, mag wheels, AM/FM/Cassette, \$4700, 756-5079 (Worcester).

'81 Volvo 244 DL, 4 dr, auto, AM/FM, AC, new brakes, suspension, exhaust system, \$8500/BO, 651-0574 (Natick).

'82 Datsun 210, 4 dr, 5 spd, Alpine deck, silver, \$4300/BO, 234-2376 (Northbridge).

'82 Honda Civic Sedan, 5 spd, 4 dr, AM/FM, new brakes/muffler, 40K mi, one owner, \$4750, 832-6276 or 832-5324 (Auburn).

'84 Saab Turbo, 3 dr, 5 spd, Chapman, garage-kept, \$12,900/BO, 235-5668 (Wellesley).

'84 Subaru GL, gold, 5 spd, AC, cassette, 5 yr ext warr, \$6350/BO, 795-7742 (Shrewsbury).

'84 Dodge Daytona, 5 spd, red, AC, AM/FM/Cassette, Lumbar seats, \$6300/BO, 393-7521 (Northboro).

'85 Toyota Celica GTS, AM/FM/Cassette, AC, elec snrf, many extras, \$12,500/BO, 443-2632 (Sudbury).