

Mini News

News For The Employees of Data General

April 5, 1985

Judy Lindenmayer Named Director Of Risk Management



Judy Lindenmayer

Judy Lindenmayer has joined Data General as director of Risk Management, reporting to George McClelland, vice president/treasurer. Judy is responsible for defining approaches to protect the company from loss of use and protect the value of its assets. She will also help plan benefits programs in conjunction with Human Resources.

Judy brings with her 17 years in Risk Management. She was most recently director of Risk Management with Rollins, Inc. in Atlanta, Georgia, and before that she was Corporate Risk manager at Zenith Radio Corporation in Chicago.

She is a past director and president of the Chicago Chapter of the Risk and Insurance Management Society and has served on market liaison and conference committees for the society.

Judy is a graduate of the Insurance Institute of America, Bryn Mawr, Pennsylvania.

Finance Groups To Move To Hookset, New Hampshire

The Finance Division U.S. Domestic Credit and Operations Accounting groups will be relocating to New Hampshire. Starting April 15, Accounts Payable, Accounts Receivable, Payroll and Travel and Ex-

pense in Westboro, and Domestic Credit in Westboro and Milford will move to a temporary facility in Manchester, New Hampshire.

A permanent facility will soon be under construction in Hooksett, located approximately 10 miles north of Manchester. Occupancy is scheduled for the summer of 1986. The Hooksett facility, composed of three attached three-story modules, will be located on 38 acres across from north campus of New Hampshire College. Data General purchased the property from the college last year.

Ken Jaeggi, Finance vice president and chief financial officer, says, "It was obvious that Finance would be unable to expand in its current locations. This move supports the overall company objective to continue to grow and expand operations, while at the same time, diversifying geographically."

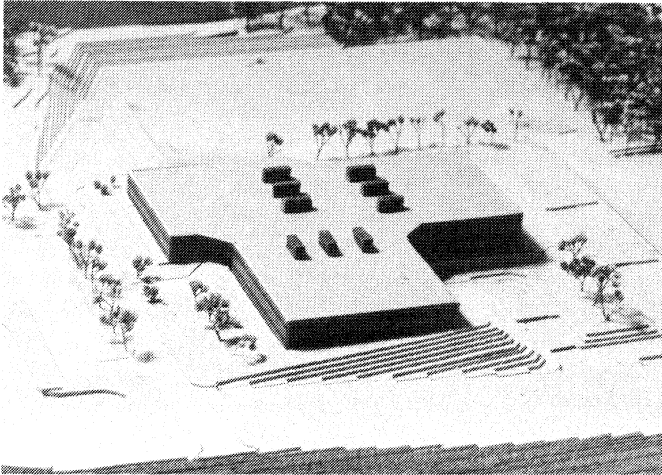
Data General began a program of diversification of work functions in 1974 in order to attract employees and distribute resources among many communities. Manufacturing operations are located in Maine, New Hampshire, North Carolina, Texas and the Far East; Research and Development facilities are located in New Hampshire, Texas, North Carolina and California. Over the past few months, Data General announced its intention to move the Technical Products Division to Denver and the Peripherals Development group to Durham, New Hampshire.

According to Al Getz, assistant corporate controller, "Common business sense dictates that we avoid becoming too concentrated in any one location. Moving to another area will help us to continue to grow and meet our goals as a department and as individuals."

Domestic Credit and Operations Accounting were selected for the move after careful review of all organizations within the Finance division. According to Al, these groups were chosen because "we wanted to establish a resource center of similar skills and relationships; and because we wanted to provide a large enough population base to be self-supporting with dedicated Human Resources, Finance and data processing staffs."

"The success of such actions depends on everyone in the company working to make it happen,"

continued AI during the move announcement. "The process of coordination, reviews and staff support will need to occur in ways that fully integrate Finance into the company just as if you were still across the street. You have the company's commitment to make that happen."



A permanent U.S. Domestic Credit and Operations Accounting soon will be under construction in Hooksett, New Hampshire. The new facility, comprised of three attached three-story modules, will be located on 38 acres across from north campus of New Hampshire College. Occupancy is scheduled for the summer of 1986.

DESKTOP GENERATION Gets New Member, Enhancements

Data General this week introduced a new dual-microprocessor system, the DESKTOP GENERATION Model 45, and announced a series of enhancements for the desktop computer family which make it even more attractive to OEMs.

The new system runs DESKTOP/UX a native UNIX operating system based on AT&T's System V, the defacto industry standard for UNIX. The multi-user system is based on the Motorola 68000 microprocessor and Data General's microECLIPSE processor. This microECLIPSE processor also supports a complete range of DESKTOP GENERATION peripherals, including printers, storage devices and terminals.

"A high-performance, low-cost system, the Model 45 with DESKTOP/UX offers an ideal environment for program development," says Chris Saleh, product manager for Data General's Technical Products Division. "We expect it to be particularly popular with original equipment manufacturers as well as sophisticated end-users."

With the OEM enhancements, the company has significantly increased storage capacity while lowering the price per user. OEM and direct sales discounts have been improved to further encourage the trend toward selling the desktop systems in large

volumes. The lower discounts could reduce the system cost to end-users by seven percent.

The company also announced a 5.25-inch 71 MB disk for the DESKTOP GENERATION Models 10, 10/SP, 20 and 30. A second disk can be added to provide a maximum of 142 MB capacity. Also announced was a tape cartridge with 18.7 MB of backup capacity. Disk upgrades to 71 MB of storage will be available for the installed base of desktop users.

According to Desktop Division Product Marketing Director Skip Duggan, "The announcements significantly demonstrate Data General's commitment to providing state-of-the-art technology. The DESKTOP GENERATION offers a fast-moving, volume-oriented product well suited to the OEM and corporate marketplace."

The Model 45 supports up to eight users and is available with up to four MB of main memory. Price for a basic system with 512K of memory is \$11,570.

Employees To Appear On Cable TV's "Management Report"

Denny Olmsted, director of North American Sales, and Alan Mercer of the Wellesley Sales office, will appear on "Management Report," a television show on ESPN cable channel this weekend. "Management Report" is presented in conjunction with the Wharton School of Management.

This week's segment looks at issues in managing top performers or "superstars." Interviews with Denny and Al will be included with those from a number of other companies in various industries. The show will air on ESPN on Saturday, April 6, from 9 to 10 a.m. and on Sunday, April 7, from 11 a.m. to 12 noon.

Third Annual PRIDE Circle Conference Is May 8-10

More than 100 PRIDE Circle members and leaders from domestic Manufacturing and Field Engineering locations will participate in the third annual PRIDE Circle Conference to be held May 8 - 10 at Data General-Woodstock.

"The Difference Is PRIDE" is the theme of the event, which will feature workshops in managing conflict, picking an effective project, benefits analysis and decision trees. Many special events are planned and several guest speakers will address attendees during the three-day conference.

Equipment Donation Aids TV Education Program

Students at the University of Minnesota will enjoy greatly expanded computer facilities thanks to a donation from Data General.

The ECLIPSE MV10000 computer, recently given to the university's computer science department, will be used to support a program known as UNITE, UNiversity-Industry Television for Education, an interactive televised education program with learning stations at many major industries in the Twin Cities area.

With the new ECLIPSE computer, the university will add courses utilizing Ada software and provide experience in using databases in a real-world environment.

The donation is valued at \$514,424.

National Library Week To Be Observed

Speaker Describes PCs As Aids To Productivity

In observance of National Library Week, April 14 - 20, a special speaking program is planned by the Corporate Library staff at Westboro. Paul Schreier, editor-publisher of *Personal Engineering and Instrumentation News*, will speak on the engineering and scientific uses of personal computers as aids to productivity, April 17 at 2 p.m. in the engineering classroom, located next to the main cafeteria.

Paul is the former editor-in-chief of *EDN (Electronic Design News)* and contributing editor to *Electronic Business and Electronic Test*.

Employees wishing to attend are asked to call the library, extension 5825, to reserve a seat. Attendance is limited.

Price Waterhouse Series In Westboro Library

Twenty-eight new titles from the Price Waterhouse series, "Doing Business in..." countries throughout the world are available in the Data General-Westboro Library. Price Waterhouse, one of the "Big Eight" accounting firms, publishes this series of guides which provide information on business and economic conditions in every foreign country in which Price Waterhouse has an office.

Written for the average businessperson, each guide features a specific nation, group of nations, or an economic community. Information contained in the guides includes basic geographic data, climate, currency, business hours, exchange controls, regulatory agencies, investment incentives, taxation, and export regulations, as well as a general description of the economy.

The Westboro library will receive new guides as they are published.

Technical Symposium Will Feature Creative Ideas

The third symposium on "Operational and Technical Excellence in Manufacturing" will be held Tuesday, April 23 and Wednesday, April 24 at Data General-Woodstock. The symposium offers Manufacturing employees a unique opportunity to offer innovating ideas and activities, according to Tracey Zellmann, director of Advanced Manufacturing Engineering and Technology.

All of the papers, submitted in abstract form, will be presented to peer groups on the first day of the symposium. Dave Chapman, senior vice president of Manufacturing, along with Manufacturing vice presidents and directors will participate in the evaluations.

Finalists will be chosen to present their papers to all participants the following day. Prizes will be awarded to the top papers. Winning entries will then be presented at the Manufacturing Management Conference in May.

Westboro

New Deli Opening April 8 At Westboro

A new food service vendor, In-Plant Catering, will operate the Westboro delicatessen beginning Monday, April 8, in the location formerly occupied by DeeGees. It will be called "Pumpnickel's" and will offer an expanded variety of deli specials, including larger sandwiches.

Pending re-arrangement of equipment, there may be a slight reduction in breakfast/luncheon services. Coffee and pastry will continue to be served from 6 a.m. through 3:30 p.m.

When Pumpnickel's is fully operational, it will also offer meats, salads, and other food items by-the-pound for over-the-counter sale. Also planned is a bakery section where employees can buy

bread, pastries and other bakery goods to take home. Many of these will be prepared on the premises.

Catering for luncheon and coffee/pastry meetings also will be available.

People

In Finance...

Financial Analysis Manager **William Plant** joins Business Division Finance, reporting to Eric Le Bideau, group controller for the business divisions. William's responsibilities include enhancement and group consolidation, as well as analysis and tracking.

With Data General for nearly five years, William was most recently Marketing controller in Data General-United Kingdom. Prior to joining Data General, William was with Price Waterhouse and Company where he most recently was assistant manager in the Management Consulting division.

William holds an MA from Trinity College and is an associate member of the Institute of Chartered Accounts in the United Kingdom.

Senior Internal Auditor **Donna Gendreau** has joined Internal Audit, reporting to Manager James Gribaudo. Donna supervises and performs internal audits of domestic operations.

Donna was with the Foxboro Company for four years before joining Data General.

She earned a BA at Assumption College and is enrolled in a master's degree program at Babson College.

Financial Systems and Procedures welcomes **Donna Sprague**, a senior financial analyst, reporting to Manager Steve Shedd. Donna handles special systems, accounting control and other related projects within Finance.

Donna comes to Data General from OnLine Computers Plus, and before that she was a data processing consultant with Deloitte, Haskins and Sells.

Donna holds a BS in accounting from Boston College.

Financial Analyst **Helen O'Donnell** joins Corporate Technology, responsible for financial reporting, forecasting and budgeting. She reports to Technology Controller David Pitcher.

Helen was departmental financial manager with the University of Massachusetts at Amherst before coming to Data General, and before that was administrative assistant to the town manager in Amherst.

Helen earned both an MBA and a BA from the University of Massachusetts.

Violet Skvoric joins Financial Systems Services Development, as an associate financial analyst, reporting to Section Manager Maurine Hennings. She is responsible for EPS, the financial and corporate

planning system on new systems within Finance.

Prior to coming to Data General Violet was staff assistant in the budget office at the University of Massachusetts at Amherst.

Violet is a December 1984 graduate of the University of Massachusetts.

In Engineering Design ...

John Martin joins Corporate Industrial Design as a senior human factors specialist, reporting to Corporate Industrial Design Manager Ed Driscoll. John reviews operability and user friendliness of hardware and software interfaces. He also participates in the ergonomic standards study underway in European and domestic business communities.

Before joining Data General John was a consultant on human factors research for product development and evaluation, and prior to that he was at Digital Equipment Corporation.

John earned a PhD from City University of New York, an MA from Columbia University and a BA at Hamilton College.

In SDD...

Corporate Systems Support welcomes Software Engineer **Ken Ernst**, reporting to Allan Beth, Communications Support manager.

Ken earned a BS in computer science from State University College at Brockport, New York.

Hardware Engineer **Michele Langlois** joins Cent Processor Development, reporting to Mike Pogue, project manager for the Graphics group. Michele designs graphics boards.

Michele came to Data General from Sykes Datatronics in Rochester, New York.

Michele earned a BS in computer science at Rochester Institute of Technology.

In Manufacturing...

Sales Administration welcomes **Charles Mascari**, a Sales administrator, supporting government orders. He reports to Manager Ron Reidy.

Charles was a customer service representative at Mutual Bank before coming to Data General.

Charles earned a BA from the University of Massachusetts at Amherst.

Ian Newman has joined Corporate Quality Assurance as a senior component test engineer, reporting to Test Engineering Manager Lou LeBlanc. He is responsible for test fixture design and program development on automatic test equipment.

Before joining Data General Ian was a component test engineer for LTX, and before that he was with IC Testing and Sprague Electric.

Ian holds a BS in electrical engineering from Worcester Polytechnic Institute.

In ISD...

Business Planning Consultant **Roy Sanford** has joined Information Systems Division (ISD) Business Planning, responsible for strategic and operational business planning projects. He reports to Stefan Casemyr, acting director of ISD Business Plans and Controls.

Before coming to Data General, Roy was with Index Systems, Inc. of Cambridge, and prior to that he was with Wharton Applied Research Center in Philadelphia and the Central Intelligence Agency in McLean, Virginia.

Roy earned an MBA in finance and a master's degree in operations research, both from The Wharton School at the University of Pennsylvania, and a BS in mathematics from Drexel University in Philadelphia.

Milford

Milford Safety Tips

Milford employees are reminded to use walkways and stairs when going to and from the parking lots. To prevent accidents, **DO NOT** cut across curbs.

The parking area designated for visitors and handicapped is reserved strictly for those people. Visitors are non-Data General employees.

Special parking privileges will be granted on a temporary basis to employees with limited mobility, such as a broken leg or sprained ankle. Because of the incline from employee parking lots to the Milford facility main entrance, on days when slippery conditions prevail, women in late stages of pregnancy may ask to park in the handicap parking area. For special parking privileges, employees must see Nurse Ann Marie Robinson in the Health Service office for authorization.

People

In FE MIS...

Grant LaPlant joins Field Engineering Management Information Systems (FE MIS) as manager of Operations and Telecommunications, reporting to Jagdish Dalal, director of FE MIS and World Wide Programs. "Al" is responsible for the operation of data centers in Milford and Fountain, Colorado. He also handles Telecommunications and CEO Comprehensive Electronic Office support.

Al comes to Data General from Cullinet Corporation where he supervised and established data

centers during his five years there. Before that he was with Grumman Data Systems.

He holds a bachelor's degree in public accounting from Hofstra University.

FE MIS also welcomes **Gary LaBonte**, a senior Systems analyst, reporting to Mike Grossman, manager of Field System Support, and Senior Programmer Analysts **Alex Cedrone**, **Robert Parker**, and **John Grenier**, all reporting to Jarka Nabrynski, manager of Systems Development and Support.

Rick Catalane joins FE MIS as project manager, supporting on-going production of all Logistics-related systems. He reports to Section Manager Joe Ney.

Rick was programming supervisor at Algonquin Gas Company in Boston prior to coming to Data General, and before that he was with American Optical in Framingham.

He earned a BS from Northeastern University.

FE MIS welcomes **Kathy Hammare**, manager of the Applications Analysis group, reporting to Jarka Nabrynski, manager of Systems Development and Support. Kathy is responsible for front-end analysis of all Systems Service requests within Field Engineering.

Kathy comes to Data General following five years with Digital where she most recently was manager of front end analysis within MIS.

Kathy holds a BS from Boston State College.

Scrap Wood Available

If you are looking for kindling for your wood burning stove, look no further. Throughout the year, scrap pallets are piled up in the Receiving area at Data General-Milford. Employees interested in taking them home to burn may contact Superintendent of Receiving Rich Petris at extension 2393 in Milford.

Southboro

In Special Systems...

Bill Dinan has been promoted to manager of European Marketing for Special Systems, reporting to Bob Kleine, Special Systems Marketing manager at Southboro. Bill will direct Special Systems activities for all European accounts.

With Data General for two years, Bill was most recently a Marketing specialist for Special Systems in Southboro.

He holds a master's degree in physics from Fairleigh Dickinson University in New Jersey and a BS from Villanova University.

Field

In Personnel At Woodstock...

Human Resource Representative **Kevin Lawler** joins Data General, reporting to Maris May, Field Engineering Human Resource manager. Kevin coordinates Human Resource services at Woodstock.

Kevin was personnel manager for Frito-Lay, Inc. before coming to Data General and before that was an industrial relations supervisor for American Cyanamid Company.

Kevin earned a BS in industrial and labor relations at Cornell University.

Make A Note...

New Address For FE Palo Alto Branch

The former Field Engineering Palo Alto, California branch office is now located in Santa Clara. The new address is:

3194 De La Cruz Boulevard
Suite #14
Santa Clara, California 95050
Telephone No.
(408) 986-0860

Benefits

Air Travel Insurance Coverage Provided

Employees piloting or crewing an aircraft while on company business are now covered for business travel, accident and accidental death and dismemberment insurance, as are employees traveling on business on a company-owned aircraft. The new coverage is provided through CIGNA.

Employee Investment Information

(As of March 29, 1985)

Savings & Investment Program

Guaranteed Fund (Current Return)	12.1%
Balanced Fund (Share Value)	\$11.36
Equity Fund (Share Value)	\$10.23
Loan Interest Rate	13.5%

Data General Stock

Current Price (as of 3/29/85)	\$45.37
-------------------------------	---------

Activities

Aerobics Class Begins At Data General April 16

The Data General Fitness Club announces a pilot program of dancin' aerobics. The program will be offered on Tuesday and Thursday evenings from 5:30 to 6:30 p.m., beginning April 16. Classes will be held in the Westboro cafeteria.

The ten-week program will be conducted by the YMCA of Greater Worcester. Included will be a cardiovascular risk factor analysis and fitness check during the first class. This will be followed by 19 sessions of aerobics which emphasize cardiovascular work, strength and flexibility. Each class will include a warm-up and cool-down period.

You can join the Fitness Club and sign up for the pilot aerobics program on Tuesday, April 9, in the main cafeteria in Westboro at 5:15 p.m. The cost to enroll in the program is \$25. Employees will be accepted on a first come, first serve basis. If space allows, registrations will be accepted by mail AFTER April 9. Requests should be sent to AEROBICS, MS B111.

Biannual Dasher Race All Set For May 10

Data General's eighth Biannual Dasher race will be held Friday, May 10. Anyone wishing to help with the administration of the race is encouraged to notify the committee. A race coordinator is also being sought.

The committee will assign marshall positions and present specific instructions one week before the race.

Racers are encouraged to start training for the big event.

All inquiries and applications may be sent to DASHER RACE, MS E111 in Westboro. Watch the MINI NEWS and posted notices for further details.

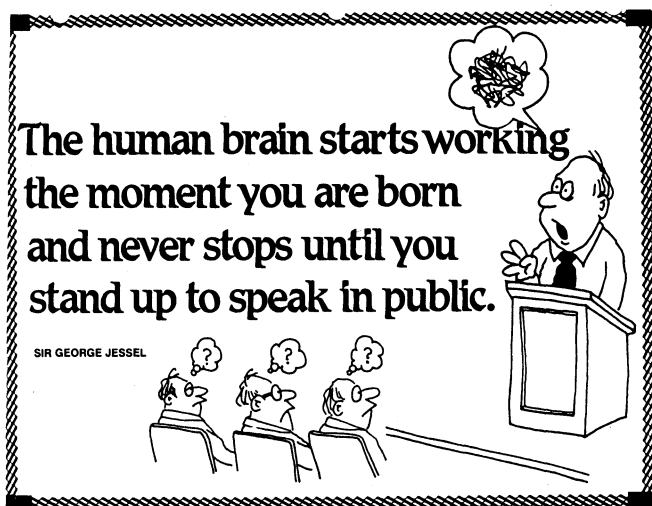
Circus Discount Tickets Sold Out

The Data General Activities Committee's block of discount tickets to the "Greatest Show on Earth" at the Worcester Centrum is sold out.

Going Fishing...To Cashes Ledge

The Data General Activities Committee is sponsoring the annual fishing trip to the Cashes Ledge fishing grounds on Thursday, August 8. Cashes Ledge is 80 miles east of Gloucester. Cost of the trip is \$68.50 a person. As space is limited, reservations will be accepted on a first-come, first-serve basis. Employees interested may contact Alan Oberle at MS 5-51 or extension 7868 in Southboro.

Improve Communications Skills - Join Toastmasters



Want to improve your communications skills and become comfortable in front of an audience?

The Data General Toastmasters Club will help you. Come to the weekly meeting held Wednesdays at 11:45 p.m. in Guest Marketing Room A (MS F213).

At the April 10 meeting, Past President Cathy Ryan will give an advanced speech. An impromptu speaking section will follow for all who would like to improve quick thinking on the spot. If you have any questions, call Doreen at extension 6445 or Karl, extension 6882.

Ski Lift Tickets Available

The Data General Ski Club has lift tickets available as follows: Mount Snow, \$15; Cannon Mountain, \$13; Cranmore, \$13; Waterville Valley, \$14 and Wilderness, \$10. Call Debbie Hixson, extension 5003 or John Watkins, extension 5099 to acquire tickets.

Steamship Coupons For Martha's Vineyard and Nantucket

Discount coupons for the Martha's Vineyard and Nantucket Ferry are available through the Data General Activities Committee. Ticket prices vary with the seasons. Schedules are available upon request.

Westboro and Milford employees send requests to FERRY, MS B111, and Southboro employees, write to FERRY, MS Southboro 6-5. Include a self-addressed, return envelope and indicate how many coupons are needed. A coupon admits one family per trip.

Tee-Off Time For The Data General Golf League

The Data General Golf League's 1985 season gets underway Monday, April 29. In its fourteenth year, the Data General group is one of the oldest employee activities in the company.

The Golf League plays every Monday evening during summer months. Players are divided into two flights, based on handicaps, with two players to a team in each division. New golfers' handicaps will be determined by three qualifying rounds which will be held April 29, May 6, and May 13. Competitive play will begin May 20.

The "A" flight will play on Juniper Hill Golf Course in Northboro, and the "B" flight will play on Saddle Hill Golf Course in Hopkinton. If possible, qualifying rounds should be played on these courses. Additional scores turned in will help establish a more accurate handicap.

Membership fee is \$15, payable to the Data General Golf League. This includes the annual golf banquet and helps defray the cost of prizes awarded throughout the season.

Those wishing to join the Golf League should fill out the following entry form, and mail it, with the membership fee, to Elwin Elliott, MS A125, by Friday, April 18.

Questions can be directed to Bahman Sharifipour, extension 6528 or Bob Doucette, extension 6223 in Westboro.

To: Elwin Elliott, MS A125
Subj: Golf League Application
Name: _____
Mail Stop: _____ Ext: _____
New Member: <input type="checkbox"/> Former Member: <input type="checkbox"/>
Alternate: <input type="checkbox"/>

Mini News is published weekly for the employees of Data General-Westboro. Material may be submitted for publication to Joan Simoneau, extension 4711, MS A235. Data General - An Equal Opportunity Employer.

CARPOOL

Carpool, to Milford from Maynard, roundtrip, 8 a.m. - 5 p.m., x2260.

Existing Carpool, needs additional riders, Brookline/Brighton area to Webo/Sobo, hrs flex, User x7093.

MARKETPLACE

FOR RENT

House, on New Found lake, Bristol, NH, 3 bdrms, July - Aug. \$435/wk, other wks. \$400, 372-8056 (Haverhill).

Cottage/Condo, Center Harbor on Lake Winnepesaukee, private beach, walk to town, \$400/wk, 366-2268 (Westboro).

House, 7 rm Cape, lg yard, \$800/mo + util, 842-8444 (Shrewsbury).

House, to lease, 6 rm, cellar, attic, Marlboro Executive area, 485-6170 (Marlboro).

Room, pool, use of all facilities, 366-7197 (Westboro).

3 Horse Stalls, avail in April, easy access to hundreds of acres incl Upton State Forest, \$100/mo, 839-6075 (Grafton).

Cape Cod, Private Falmouth salt water front, 3 bdrms, hot tub & sauna, \$1000/wk, avail June to Sept, 2 wks min, 481-1067 (Marlboro).

Apt, Westboro Center, 4 rms, heat, in older victorian, avail 4/1, \$450/mo, 481-4169 (Marlboro).

Condo, Cold Spring Resort, Ashland, NH, avail 8/10 - 8/17, 2 bdrm, golf, tennis, pool w/jacuzzi, \$500, 839-9325 (Grafton).

WANTED

Portable Crib, in good condition, reasonably priced, 839-3529 (Grafton).

Ladies Left Hand Golf Clubs, for beginner, 447-2069 (Whitman).

Summer Rental, 1 wk, short walk to beach, 2 bdrms, crib, 828-5107 (Canton).

Roommate, to find/share apt in Newton area, mid-June/July 1, 792-1785 (Worcester).

Accordian, full size, 120 bass, 798-3427 (Worcester).

FOR SALE

Refrigerator, Kelvinator, side-by-side, harvest gold, 24 cu. ft, \$275, 792-3098 (Worcester).

Ladies Black Leather Motorcycle Jacket, sz 8/9, \$75, 839-9307 (Grafton).

Tire Rims, 15 in, 5 lugs, 14 in, 5 lugs, 473-4347 (Milford).

Upland Woodstove, Model #206, \$375, 478-0846 (Mendon).

Furniture, couch, 2 kingsize swivel chairs, \$200; custom-made walnut wall unit w/4 cabinets, \$200; Mexican handmade table, \$100, 393-2815 (Northboro).

Technics Stereo System, SL5200 Quartz locked, direct drive turntable, SU8044 Amp, RS-M24 tape deck, ST-S1 tuner, \$590/BO, 366-1929 (Westboro).

Items, unused, Bose 402 Pro loudspeakers, \$500; Unused Pearey XR-500 mixer amp w/ converter, \$250, 365-2357 (Clinton).

Woodburning Stoves, Russo-front loading w/potential for coal/wood, Vista side loading wood only, \$300/ea or \$550/both, 879-5180 (Framingham).

Travel Trailer, '78 Bendix, 19 1/2 ft, self-contained, slps 6, many extras, \$4500/BO, 699-7727 (Plainville).

Items, Marantz 25 watt stereo receiver, \$50/BO; 4 wheels, 14 in, chrome w/baskets, \$50/BO, 821-0129 (Canton).

Saddle, 18 in forward seat jumping saddle, \$185, 485-7473 (Marlboro).

Boat, 19.5 ft Fiberglass Deep V, 175HP merc, Galv Trailer, full canvas, \$8895, 443-3762 (Sudbury).

AKC German Shepherd Puppies, 6 male, 6 female, avail May 1, 877-3290 (Framingham).

Prom/Bridesmaids Dresses, sz 10-16, worn once, \$15/ea, 869-6339 (Boylston).

Dishwasher, portable, \$100/BO, 568-1659 (Hudson).

Blue Gown, worn once, sz 10, \$50, 473-2594 (Milford).

Ultralight Airplane, Vector 610, many extras, \$1600/BO, 842-0357 (Shrewsbury).

Tent Trailer, slps 4, \$400, 853-9267 (Worcester).

Items, tool box, snap-on, 9 drawer, complete w/tools, \$250; Acme juicer, vegetable juicer, \$50, 752-8230 (Worcester).

Items, 2 living rm chairs; cabinet stereo w/AM/FM; cabinet sewing machine; 6 ft picnic table w/2 separate benches, reasonable, 852-4604 (Worcester).

Ariens Model 34RT Rotary Tiller & Weight Box Attachment, for Ariens tractor, \$600, 234-8026 (Whitinsville).

Utility Trailer, \$50, 393-7271 (Northboro).

Double Bed, frame w/wheels, \$35, 842-1033 (Shrewsbury).

Townhouse Condo, 2 bdrms, 1 1/2 baths, cathedral ceilings, laundry hookup, Hudson Cassabet Village, \$119,900, 562-4426 (Manchester).

Land, 12 acres, Vermont, 20 min from Magic Mtn, 1/8 mi from lake St. Catherine, marina rights, \$20,000/BO, 234-5142 (Whitinsville).

Membership, to Women's World Spas, expires Aug 4, 1986, incl sauna, whirlpool, nautilus, aerobic & jazz class, \$125, 529-4277 (Upton).

AUTOS

'62 Chevy 3/4 Ton Pickup, new 307 V8, auto, spoke wheels, big tires, \$795, 443-3762 (Sudbury).

'71 Buick Skylark, 350 ci, some body work needed, \$700, 263-0658 (Acton).

'72 Norton 750, top end rebuilt, new exhaust, \$1250, 435-5614 (Hopkinton).

'74 Datsun 710, 4 spd, AM/FM/cassette, some rust, new tires, exhaust, \$600, 485-9333 (Marlboro).

'75 Plymouth Volare Brougham, 77K mi, some rust, \$400/BO, 435-5430 (Hopkinton).

'76 Datsun, engine runs, drive shaft broken, good for parts, 752-8230 (Worcester).

'77 Pontiac Grand Lemans, 8 cyl, 301 eng, PS/PB, AC, 84K mi, \$1800, 875-6860 (Framingham).

'77 Plymouth Fury, new exhaust, carburetor, recently tuned, \$1200, 478-0079 (Upton).

'78 Camaro, V8, auto, PS/PB, rear spoiler, rally wheel w/new radials, \$3700/BO, 234-2961 (Whitinsville).

'78 C20 Chevy Fleetside Pickup, w/extras, \$2795, 529-4427 (Upton).

'78 Olds Cutlass, V8, AM/FM, PS/PB, loaded, \$2500, 481-5155 (Marlboro).

'78 Cadillac Coupe Deville, 59K mi, loaded, \$6400, 485-0515 (Marlboro).

'79 Firebird, auto, PS/PB, AC, recent tires, paint, \$4800, 529-4407 (Upton).

'79 Chevy Malibu Classic, 6 cyl, 57K mi, AM/FM/auto reverse cassette & equilizer, t-roof, \$2995/BO, 839-6075 (Grafton).

'79 Mercury Cougar XR7, 65K mi, 798-2060/799-6095 (Shrewsbury).

'80 VW Rabbit, 62K mi, \$3800, 393-6104 (Northboro).

'80 Chrysler LaBaron, 46K mi, 4 dr, white, \$3800, 792-3098 (Worcester).

'80 Camaro Berlinetta, loaded, 36K mi, \$6500, 842-1976 (Shrewsbury).

'80 Chevy Camaro Rally Sport, 2 tone blue, snrf, AM/FM/cassette, 53K mi, \$5000/BO, 366-5634 (Westboro).

'80 Corvette, black, 25K mi, \$13,500, 485-0515 (Marlboro).

'80 Datsun 310GX, 5 spd, velour interior, AM/FM/cassette, rear window wiper/washer, defogger, 234-8451 (Whitinsville).

'81 Datsun 280-ZX, loaded, t-top, 37K mi, 5 spd, \$10,500, 655-3679 (Natick).

'81 Yamaha XS850 Midnight Special, \$2300/BO, 966-1138 (Bellingham).

'81 Buick Skylark, V6, 2 dr, \$4800, 485-0515 (Marlboro).

'81 Ford F-100, std w/o.d., 26 mpg, \$4500, 529-4068 (Upton).

'81 Kawasaki 440 LTD, \$800/BO, 757-4819 (Shrewsbury).

'82 Honda Accord, 4 dr, AC, 4 spkr AM/FM, \$6750, 839-3283 (Grafton).

'82 Mazda 626 SD, 41K mi, new struts, muffler, alarm, \$5700/BO, 256-6583 (Boston).

'83 Renault Alliance, 4 dr, 5 spd, fwd, 12K mi, AM/FM/cassette, \$5500, 568-1338/562-2296 (Hudson).

'83 Mercury LN7, 5 spd, 22K mi, \$4600/BO, 533-8777 (Medway).

'83 Mustang GT 5.0, 18K mi, t-roofs, loaded, white/black, BO, 757-2313 (Shrewsbury).