

Mini News

News For The Employees of Data General

August 15, 1988

Skates Named Executive VP/ Chief Operating Officer



Ron Skates

Ron Skates has been appointed to the new position of executive vice president and chief operating officer. He reports to Ed de Castro, president and chief executive officer. Ron, previously senior vice president for Finance and Administration, assumes day-to-day operating responsibility for all company divisions. Ed has been functioning in the role of chief executive officer and chief operating officer, though without the title. This change in the organizational structure is closer to the way most Fortune 500 firms are organized today. Ed will continue to focus his efforts on Data General's product, technology and overall strategic direction.

"Together, over the past year our management team has developed an ambitious strategic plan," says Ed. "It will take strong operational skills to turn our plan into success in the marketplace. As a key member of the management team, Ron has proven those skills in helping to shape the company for the future."

Ron joined Data General in November 1986 as senior vice president for Finance and Administration. In that capacity he was responsible for all financial operations of the company as well as human resources, facilities management, and other administrative functions.

Prior to joining Data General Ron was an audit partner at Price Waterhouse. He joined Price Waterhouse in 1965 and was elected partner in 1976. He is a certified public accountant.

Ron holds an bachelor's degree, cum laude, from Harvard College and an master's degree in business administration from the Harvard Business School. He is a trustee of Brigham and Women's Hospital, a trustee of the Winsor School, a past president of the Harvard Business School Association of Boston, and a past president of the Executives Club of the Boston Chamber of Commerce.

Data General Announces Several Products

Data General has introduced several new hardware products: the DASHER/386, the ECLIPSE MV/2500 DC, a family of terminals and a 322MB Winchester disk drive.

The DASHER/386



The introduction of the DASHER/386 expands Data General's line of PC offerings at the high-end. This high-performance, multi-purpose, IBM PC-AT compatible system provides cost-effective, high-speed processing power for a wide range of applications and environments. Both MS-DOS 3.3 and GW-BASIC 3.2 are bundled with the system.

The DASHER/386 features an Intel 80386 processor which operates at 16 megahertz and supports standard PC and PC-AT buses. The system, which provides

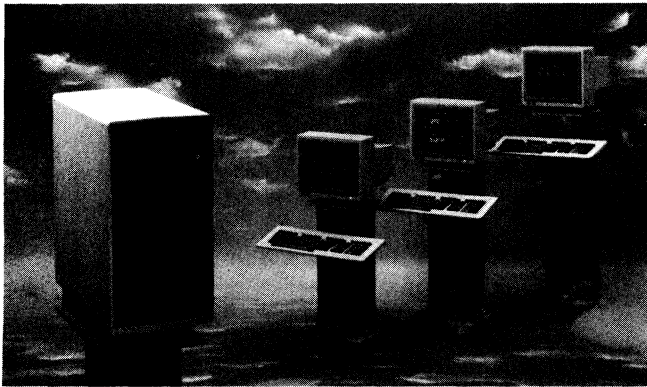
more than twice the processor throughput of the IBM-PC AT, can function as a stand-alone single-user productivity tool, as a personal computer in a networked Data General Personal Computer Integration (DG/PC*I) environment, or as a technical workstation or multi-user PC.

"The introduction of the DASHER/386 is in response to the demand for low-cost, highly compatible PC systems for single-user or integrated computing requirements," states Ward MacKenzie, vice president of Corporate Marketing.

At the entry level, the DASHER/386 includes 1MB of system memory, expandable to 16MB; an EGA adapter card; one 5.25-inch 1.2MB diskette drive and 40MB or 70MB Winchester fixed disk. A second 40MB or 70MB Winchester fixed disk also is available for a total of 140MB of storage capacity. Other options include a 3.5-inch 1.44MB diskette drive which can read and write 3.5-inch 720KB diskettes, and a second 5.25-inch 360KB or 1.2MB diskette drive. Video options include a 12-inch monochrome monitor, a 13-inch EGA color monitor, and a high-resolution, 15-inch monochrome monitor for desktop publishing applications. A total of 10 I/O slots are standard: five for the base system and five for industry standard PC cards.

The DASHER/386 base unit, priced at \$5,735, consists of a 1MB system, with a 40MB disk, 1.2MB floppy, enhanced PC-AT style keyboard, EGA video card, monochrome monitor and MS-DOS 3.3.

The ECLIPSE MV/2500 DC System



The ECLIPSE MV/2500 DC system is an integrated minicomputer system in office packaging. The new system improves the price/performance of Data General's low-end 32-bit product line which includes the ECLIPSE MV/1400 DC, ECLIPSE MV/2000 DC and ECLIPSE MV/7800 DCX systems.

The ECLIPSE MV/2500 DC system supports AOS/VS, a sophisticated multi-user, multi-program timesharing system, DG/RDOS and DG/UX, a System V based UNIX operating system.

The ECLIPSE MV/2500 DC system is 72 percent faster than the ECLIPSE MV/1400 DC and ECLIPSE MV/2000 DC systems. CPU performance is two to three times that of Digital Equipment's MicroVax II for

using various commercial and scientific benchmarks.

Improved integral mass storage capabilities, input/output performance and enhanced CPU allow the ECLIPSE MV/2500 DC system to be tailored to meet the needs of up to 64 users in distributed data processing, departmental office automation and small business environments.

Beneficial Corporation plans to use the ECLIPSE MV/2500 DC system for its branch loan office automation application. Commenting on Beneficial's use of the ECLIPSE MV/2500 DC system, Robert Hantak, vice president of Information Systems at Beneficial, says, "The ECLIPSE MV/2500 DC system will be ideal for our branch automation project, offering the price/performance we require for our larger loan offices. With the ECLIPSE MV/1400 DC, ECLIPSE MV/2000 DC and ECLIPSE MV/2500 DC systems, we now will be able to support the same application for all our branch offices with equal cost-effectiveness. We plan to incorporate the ECLIPSE MV/2500 DC system as part of our efforts to control administrative costs and improve productivity throughout our 1100 branch offices in both the U.S. and Canada."

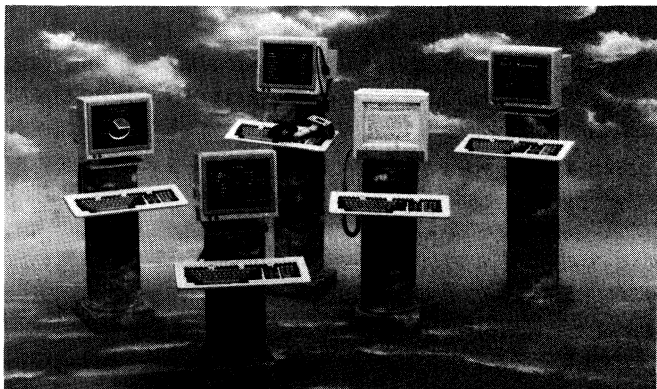
Ward MacKenzie says, "The introduction of the ECLIPSE MV/2500 DC system enhances Data General's low-end systems offerings and gives our end users and value-added resellers a flexible, cost-effective solution in one of the most competitive segments of the computer industry. The ECLIPSE MV/2500 DC system also provides aggressive price/performance against upper low-end offerings from IBM and Digital Equipment, and easily can compete with many of the high-end 32-bit supermicros. Also, the ECLIPSE MV/2500 DC system is the first Data General integrated system supporting both the integral cartridge tapes and Winchester disks compatible across our entire ECLIPSE MV/Family product line, providing the smoothest growth path from our small to large systems."

Priced at \$30,000, the entry level system includes the CPU with integral floating point unit (FPU), 8MB of memory expandable to 24MB, integrated mass storage controllers and office packaging. It also includes a single 322MB Winchester disk and a 21MB streaming cartridge tape drive which offers media compatibility with the ECLIPSE MV/1400 DC and ECLIPSE MV/2000 DC systems.

New Terminals

Data General's new family of low-cost, high-performance terminals is priced as much as 50 percent lower than previously available models. The new models D216/216E, D412, D462/462E, D578, 5320BC and 5230LG are upward compatible and will replace the D214/15, D411/61, D577 and 5244BC. All models are based upon a new modern, ergonomic design featuring a wedge-shaped 14-inch monitor with tilt-and-swivel design. It displays 24 lines by 80 or 132 columns. The monitor is available in both green and amber displays.

The new D216-based 5230BC and 5230LG models incorporate integral bar-code wand or hand-held laser gun scanner. The bar-code scanning terminals are ideal for applications requiring fast and reliable keyless data entry such as medical, retail, inventory control and automated identification. When enabled, the terminals auto-discriminate the most widely-used bar code formats including UPC, EAN, LOGMARS, Interleaved 2-of-5, Codabar and 128. Prices for the terminals range from \$445 for the D216 to \$2945 for a 5230LG.



322MB Winchester Drive

The 5.25-inch, 322MB Winchester disk drive is for use with the Combined Storage Subsystem for Departmental Computers (CSS/DC) and the Combined Storage Subsystem (CSS) product families. The new drive, model 6491, increases maximum disk storage capacity by 37 percent for the mid-range to high-end of the ECLIPSE MV/Family, while reducing the cost per megabyte for these systems by as much as 26 percent over the 234MB drive already available. The drive is well suited for systems such as the new ECLIPSE MV/2500 DC computer.

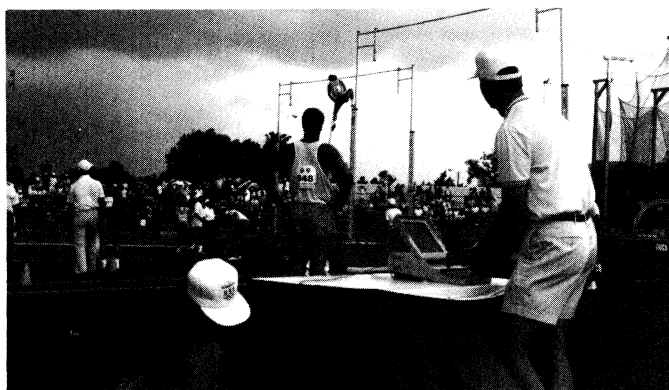
"This high reliability drive is the latest building block for the mass storage subsystems. It offers users higher capacity storage with faster seek times while reducing cost of ownership by 8 percent over the 234MB drive presently available," says Joe Clayton, product manager for Mass Storage Peripherals.

The drive is priced at \$7,500.

Data General Sponsors Olympic Track And Field Trials

While the top U.S. track and field athletes were competing for an opportunity to represent the country at the upcoming Olympic Games in Seoul, South Korea, Data General was excelling on its own. The company was named the Official Computer of the U.S. Olympic Track and Field Trials held last month at the University of Indiana. It was bestowed the moniker after providing computers to The Athletic Congress to record and distribute scoring information for the event.

Data General also is the Official Technical Computer Sponsor of the 1988 U.S. Olympic Committee and U.S. Olympic Team.



Mark Langner (right), Systems Engineering branch manager at Data General's Indianapolis office, and John Dransfield (bottom left), Field Engineering support specialist, worked hard to make sure things ran smoothly during the pole vaulting competition.



Greg Bogan, a Systems Engineering consultant, worked behind the scenes to ensure a successful week of events.

During the track and field events, Data General computers monitored automated scoring and measurement equipment from trackside, recording and distributing that information to The Athletic Congress operations room, the press box, the officials room and The Athletic Congress offices at the university.

The company supplied DATA GENERAL/One portable computers, DASHER/286 personal computers and ECLIPSE MV/2000 DC mini-computers. The hardware was networked together with Data General Personal Computer Integration software (DG/PC*1).

In addition to playing a role on the field, Data General was prevalent around it, as well. Throughout the stadium were many Data General banners, reminding those in attendance and watching the event on ABC-TV that Data General was a major participant in the event. Data General also received acknowledgement for its participation in The Indy Star, a major newspaper in the area, as well as local television stations.

Many Data General customers were given tickets to the event and were entertained daily. Representatives from such companies as Bertelesman, CompuSystems

and St. Vincent's Hospital enjoyed the week of track and field events.

The entire event was designed, implemented and supported by Data General's Indiana office in Carmel. Ed Anania, branch Sales manager of the Indianapolis office, reports that the Olympic Committee gave Data General high marks for its performance. "The Olympic Committee was extremely pleased with Data General," says Ed. "This event required a great deal of teamwork between the Systems Engineering, Sales and Field Engineering organizations. All three groups got involved and worked together in making this a successful event. From a local branch perspective, this was something positive we could do for Data General as a company."

Southboro Employees Mark Birthdays



Southboro employees marking birthdays in July and August gathered in the cafeteria to exchange ideas with Plant Manager Bruce Neff.

Southboro Plant Manager Bruce Neff recently met with employees whose birthdays fall in July and August to discuss Data General's business strategy and other topics of interest. The roundtable program, now in its fifth year, continues to be a method for Southboro employees to communicate with Manufacturing managers on a variety of issues.

Last month's sessions gave Kevin Lemire, Facilities manager, and Bruce an opportunity to respond to questions regarding on-going renovations of Southboro's buildings. They told employees that yet to be constructed in Building Five are training classrooms and an MIS Resource Center. The Distribution center and warehouse are scheduled to move out of Building Three and into Building Four A along with the Continuing Products Division area. Southboro's Information Management Group temporarily will be relocated to Milford while its area in Southboro is refurbished.

Another topic of discussion was the implementation of Southboro's smoking policy which is due to take place at the start of fiscal year 1989. To aid employees who wish to stop smoking, the Southboro Medical department will be offering smoking cessation classes.

Benefits

Purchase Plan Participants Sell Stock

Employee Stock Purchase Plan participants who use the Shearson Lehman Hutton stock plan sold their shares of Data General stock at \$18.825. On Friday, August 5, 24,890 shares were sold for purchase plan participants. In addition, 47,287 Shares were held in employees' accounts.

Through the Employee Purchase Plan, employees can arrange to have Shearson Lehman Hutton sell their stock approximately three business days following the end of the purchase period. The average value of all shares sold will be the reported sale price of the stock. After deducting commissions and taxes, the proceeds from the sale will be mailed to the employees at the end of five business days following the completion of the sale.

Employees who have held shares in their accounts may sell any shares at anytime by calling Shearson Lehman Hutton or completing a Transaction Order Form.

The current employee purchase period runs from August 1 to January 31. The opening day price was \$16. Employees will purchase stock at 85 percent of that price or 85 percent of the average market price on August 1, whichever is lower.

Shearson's new address and telephone number is:
Shearson Lehman Hutton
EMSIP Department
2 World Trade Center
102 Floor
New York, NY 10048

Toll free remains the same: 1-800-EMSIP77
New local numbers are: (212) 528-1914, 1915, 1916.

New Schedule For Home Owners' Federal Savings

A bank representative from Home Owners' Federal Savings (formerly Union Warren) will be available in Westboro, Southboro and Milford on the first Wednesday of every month to assist employees with any questions regarding the Home Owners' programs. The representative will be available in Data General facilities at the following times:

9:00 a.m. to 9:45 a.m.	Milford Cafeteria
10:15 a.m. to 11:00 a.m.	Southboro Cafeteria (Bldg 5) upper level
11:30 a.m. to 1:00 p.m.	Westboro Cafeteria (4400) near stamp machines

For more information, contact Carol Walsh in the Corporate Benefits department in Westboro at extension 4576 or via CEO on host IMG003.

People

The Communications Systems Group

Martin DelVecchio joins Data General as a software engineer, reporting to Charles Jablow, PC*I section manager. Martin will help develop and maintain PC communications software for DG/PC*I. He holds a bachelor's degree in economics from the University of Virginia.

In Marketing

Lynda Schiff enters Marketing Education's Curriculum Development group as a senior instructional technologist, reporting to Carlos Soares, manager of Curriculum Development. She will develop courses for Sales representatives and systems engineers. Prior to joining Data General, Lynda held various positions with Leading Edge Products, the Foxboro Company and Data Terminal Systems. She holds a bachelor's degree from the Berklee College of Music.

In Finance And Administration

Brian Ross joins the company as a senior financial analyst, reporting to Armand Dilando, manager of Corporate Profit Planning. Before joining Data General, Brian worked for Marine Midland Bank of North America. He holds a bachelor's degree in business economics from Cornell University and a master's degree in business administration from Indiana University.

In SDD

Richard Clark, Joe Seeger and **Tom Brown** join Data General as hardware engineers. Richard and Joe report to Leo Waibel, manager of Integrated Systems. Prior to joining the company, Richard worked in the engineering change and repairs department of IBM. He holds a bachelor's degree in electrical engineering from Clark University.

Joe will design hardware for the next generations of ECLIPSE MV/Family computers. He holds a bachelor's degree in computer engineering from Carnegie Mellon University.

Tom reports to Don Wisner, hardware project leader. Tom will design hardware for new high-end ECLIPSE MV/Family systems. Tom received both his bachelor's and master's degrees in computer engineering from Iowa State University.

In Manufacturing

Stephanie Fung and **Fred Zwick** have recently joined Data General in Southboro. Stephanie is a software engineer, reporting to Rich Keeler, manager of Software engineering for the Reproduction Distribution Services organization. She will be responsible for the design, analysis and support of software reproduction

manufacturing processes. Stephanie holds a bachelor's degree in computer and information systems from Kutztown University of Pennsylvania.

Fred is an associate test engineer, reporting to Spencer Adams, manager of IC Test. Fred will be analyzing performance data and developing test enhancements for integrated circuits. He holds an associate's degree in chemical engineering from Waterbury State Technical College and a bachelor's degree in electrical engineering technology from Northeastern University.

Training

The following courses are offered by Educational Services for employees who wish to enhance their skills with Data General systems and software.

- **AOS and AOS/VS User (S209)** - This course offers an in-depth introduction to the use of the AOS and AOS/VS operating systems. This five-day class begins Monday, September 12
- **INFOS II Utilization and Design (S306)** - This course teaches the organization and management features of the Data General INFOS II file management system. This five-day course begins Monday, September 12.
- **CEOWrite and CEO Connection (OA 154)** - This workshop acquaints employees with the CEOWrite word processor (features, terms, and functions) and its CEO Connection to a host computer system. This three-day class begins on Wednesday, September 14.
- **Getting Started with PRESENT (OA 145)** - This course will teach how to organize, display and manipulate numerical data for administrative support and effective business decision planning with Data General's PRESENT information presentation facility. This one-day course begins on Thursday, September 15. Prior approval of your supervisor is required for course registration.

Please call (tie line) 221-1647 to enroll in these classes or please send a request to REGISTRAR:OMEGA to receive an enrollment form to register for the above classes.

Activities

Circus Maximus

Discount tickets are available to the September 10 performance of the Moscow Circus at the Centrum. This is the circus' first appearance in the U.S. in ten years. The \$15 tickets to the 3:00 p.m. show can be obtained by sending a check payable to Data General Activities Committee to "Circus" at Mail Stop C-128 in Westboro.

Employees Enjoy Evening Harbor Cruise



The third outing of Data General's season was held last Friday night with a cruise around Boston Harbor. Employees enjoyed a warm summer evening as they danced the night away while the sites of Boston passed by. The boat left Boston at 8:00 p.m. and returned at 11:00 p.m., leaving plenty of time to go into the city and enjoy some night life. A limited number of tickets for the August 19 cruise are still available. To obtain a ticket, mail your request to "Outings," at Mail Stop C-128 in Westboro or stop by the Activities Office at C-128. Bus transportation also is available for the price of \$8. To reserve space on the bus, send a check to "Busses," at Mail Stop C-128.

Dasher Road Race Set For September

The Dasher Road Race will be held Friday, September 16. Any employee interested in participating in any of the Dasher Road Race events should fill out the following entry form and return it to Dasher Races at Mail Stop D 138 in Westboro by September 9 at the latest. The fall event is comprised of a three-mile dash, a 10 kilometer run and the new 11-mile time-trial bicycle race.

Entry Form - Dasher Road Races - Sept. 16

(Please Print legibly!)

Name: _____

Location: _____ MS: _____

Extension: _____ Badge #: _____

Race Categories:

(Please check one in each box)

<input type="checkbox"/> Under 35
<input type="checkbox"/> 35 or over

<input type="checkbox"/> Male
<input type="checkbox"/> Female

<input type="checkbox"/> 11-Mile Bicycle Race
<input type="checkbox"/> 3-Mile Foot Race
<input type="checkbox"/> 10-Kilometer Foot Race
<input type="checkbox"/> Race Day Volunteer

T-Shirt Size:

(Please circle correct size)

S M L XL

I represent that I am in good physical condition and sufficiently trained to participate in the Dasher Road/Bike Race. I am aware of the risks which are inherent to this activity, and I am participating at my own risk. In consideration of Data General Corporation and the Data General Dasher Road Race Committee accepting this application, I hereby assume any and all risks which may be associated with this activity and hereby waive and release all causes of actions and claims for damages of any nature whatsoever which I may have against Data General Corporation, its employees, directors, officers and agents arising out of or connected with my participation in the activity.

Signature: _____

Date: _____

Return this race form to Dasher Race, MS E111 in Westboro no later than May 6. **INCOMPLETE FORMS WILL NOT BE ACCEPTED.** The Dasher races are sponsored by the Data General Employee Activities Committee solely for Data General employees.

Tenpin League Sign-up

The Data General Tenpin League begins its fall season on Wednesday, September 7 at 4:45 p.m. at the Town and Country Lanes in Shrewsbury.

Interested employees should complete the form below and send it to Patty Barry at Mail Stop E-111 in Westboro or send the same information via CEO to Patty on host Apollo or Nancy Ricciuti on host Bkworm. You may sign up as an individual or if you have a complete team just submit one form for the entire team.

The officers of the league have put together a Free Night of Bowling at the same lanes on the evening of Wednesday August 31 before the season begins. It also will start at 4:45 p.m. and all are welcome to come down to have some fun.

Complete either the INDIVIDUAL or TEAM section.

INDIVIDUAL:

Name

Mail Stop

Extension

CEO Address

TEAM:

Team Name

TEAM CAPTAIN:

Name

Mail Stop

Extension

CEO Address

MEMBERS:

Name

Mail Stop

Extension

CEO Address

Name

Mail Stop

Extension

CEO Address

Name

Mail Stop

Extension

CEO Address

Softball Standings

The following are the Data General Softball League standings as of August 5:

Semi-Competitive A Division

	W	L	T	PCT	GB
*Survivors	13	1	0	0.929	-
*Special Systems	12	1	0	0.923	1/2
*Nuked	12	2	0	0.857	1
DG IMG	10	5	0	0.667	3 1/2
Runagades	5	9	0	0.357	8

Semi-Competitive B Division

	W	L	T	PCT	GB
Hit Men	6	5	1	0.542	-
Bill Busters	7	7	0	0.500	1/2
Wellesley	6	9	0	0.400	2
Cancelled	5	8	0	0.385	2
DG Red Ties	1	11	0	0.083	5 1/2

Semi-Competitive C Division

	W	L	T	PCT	GB
RDS	7	6	0	0.538	-
Off-Base	6	7	0	0.462	1
ANTS	6	9	0	0.400	2
Brew-Crew	5	8	1	0.393	2
Mongrels	1	14	0	0.067	7

Recreational A Division

	W	L	T	PCT	GB
Base Invaders	11	1	0	0.917	-
The Fun Bunch	9	2	0	0.818	1 1/2
Slugs	9	3	0	0.750	2
Fun Hogs	8	3	1	0.708	2 1/2
Zymotic	5	6	0	0.455	5 1/2
Cadavers	5	8	0	0.385	6 1/2
Swinging Bubatos	3	9	0	0.250	8
Bubbas & Bubbettes	2	8	1	0.227	8
MV Sox	1	13	0	0.071	11

Recreational B Division

	W	L	T	PCT	GB
*Eclipse Engineering	11	2	1	0.821	-
*Misfits	11	2	1	0.821	-
*WCIF	10	3	2	0.733	1
Mudslides	10	6	0	0.625	2 1/2
Byte Blasters	8	6	0	0.571	3 1/2
Opponents	5	7	0	0.417	5 1/2
Short Hops	4	10	1	0.300	7 1/2
Slug This	3	10	0	0.231	8
Comm-Bats	2	9	1	0.208	8
None of the Above	3	12	0	0.200	9

*Clinched playoff spot

Area Code Change

As of July 16, the area code for the Westboro, Southboro and Milford areas was changed to 508. Cities to the east of Rt. 128 fall in the 617 area code. So remember, dial 617 when placing calls to locations in eastern Massachusetts. If you do not you will get a busy signal.

MARKETPLACE

FREE

2 Female cats, neutered, ages 3 & 4; 234-9857 (Whitinsville).

WANTED

Roommate, to share lg 4-bdrm, 2-bth, colonial, walk to beach, extras, \$350/mo+; 485-1577 (Marlboro).

Babysitting, in my home, 3 mos & up, 393-7458 (Northboro).

Roommate, M/F, non-smkr, to share 3-bdrm apt, 10 min from DG Webo, no pets, avail 10/1, \$234/mo + 1/3 util; 485-3980 (Marlboro).

Housemate, male, non-smkr, to share lg 4-bdrm house, 8 mi to DG, avail 9/1, \$250/mo + 1/4 util 460-9909 (Marlboro).

FOR RENT

3 Bdrm Condo, Woonsocket, RI, 2nd floor, deck, appli, a/c, security, avail 8/14, \$645/mo; 528-2216 (Franklin).

Apartment, 1st floor, 3-bdrms, hdwd flrs, near rts 9/290, 799-6873 (Worcester).

Waterville Valley, NH, twnhse, slps 6, sports center, \$375/wk; \$225/wkend; 687-7489 (Methuen).

Newport, RI, condo on water, 2-bdrms, frnshd, parking, view of harbor, \$600/wk; 469-4875 (Boston).

Loon Mtn Village, NH, 3-bdrm twnhse, 2-bth, vcr, cable, health club, pools, tennis, Sept/Oct foliage, wknd & mid-wk rates, 384-3292 (Wrentham).

Dennisport, efficiency w/patio, cable tv, pool, 2/10 mile to beach, \$295/wk, \$195/wk off-season; 435-3794 (Hopkinton).

Dennisport, 2-bdrm duplex cottage, deck, 1/10 mile to beach, \$460/wk, \$295/wk off-season; 435-3794 (Hopkinton).

FOR SALE

Waterfront Townhouse/condo, 3 level, 2-bdrms, 1.5 bth, deck, \$92,900; (603) 659-7017 (Newmarket, NH).

2 Miyata 12-spd bikes, '84 model, maroon, locks & carry bags, \$150/ea; 870-5768 (Westboro).

14' Fiberglass canoe, w/paddles, cushions, car top carrier, \$325; 435-5523 (Hopkinton).

4 Michelin TRX, M/S radial tires on alum rims, \$650; (508) 653-5774 (Natick).

Rabbit & cage, w/accessories, \$25; 473-7311 (Milford).

Items, blk lacquer dngm set w/buffet, \$700; blk lacquer bdrm set w/nite tbls, trpl drsr, mirror, 6-dr chest, \$800; entertainment center, \$150; 791-5799 (Worcester).

Items, 4 Toyo radials, 185/70SR14, 14K mi, \$160/BO; older Thermador elec wall oven, \$40/BO; 969-0123 (Newtonville).

Items, coffee table, \$50; Vivitar 110 camera, \$30; Sanyo movie camera, \$100; Olympus 35 mm, \$100; 393-8493 (Northboro).

Tires, 2 Pro Trac G60-15 w/Keystone rims; 2 super wide Grand Prix, P225170B14, new, mounted, BO; 366-2114 (Westboro).

Speakers, ADS acoustic dynamic, 200 watts, \$400/pair; 799-5472 (Worcester).

Couch, blue & beige, 4-yrs old, \$350/BO; 473-2624 (Milford).

Framingham, 7-rm ranch, 3-bdrms, 1.5 bths, lg yard w/shed, some appli; 877-6348 lv msg (Framingham).

Bedroom Set, 3-pc, dark pine, queen waterbed w/hutch, mirror, armoire, bureau w/hutch, \$1800/BO; 528-9947 (Franklin).

Ranch, 2-bdrms, 18' fmylrm, lvngm, hrdwd flrs, frplc, garage, \$162,000; 875-1634 (Framingham).

NEC 20" TV Monitor, stereo, model CT-2020A, 1-yr old, \$350; 536-5354 (Boston).

Items, rowing machine, \$20; exercise bike, \$25/ 832-5691 (Auburn).

Soft-sider waterbed, 1 yr old, queen size, \$475; 481-6222 (Marlboro).

Mixed hardwood, 22-24" lgths, split, aged 3 yrs, BO; 537-1945 (Leominster).

Nishiki 12-spd bike, blue, 30 mi, \$340; 365-2009 (S. Lancaster).

16' Mirror Craft boat, w/40 hp Johnson motor, tilt trlr, \$1200; 473-3865 (Milford).

PA Equipment, 16 chnl st. mixer, 300W st. pwr amp, 27 band eq, 100' 16 chnl snake, 6 shure mics w/cables & stands, 7 space rack, \$2350/BO, will separate 485-8404 (Marlboro).

Townhouse, on golf course, 2-bdrm, 2.5 bths, dngm, lvngm, fmyl room w/frplc, 2 car garage, bsmt, \$159,900; 473-2888 (Milford).

AUTOS

'73 Plymouth Satellite Sebring, parts car, V8, runs, BO; 366-2114 after 5 p.m. (Westboro).

'75 Plymouth Valiant, needs brakes, \$375; 365-2009 (S. Lancaster).

'80 Yamaha XS850 special, 8700 mi, new tires & battery, \$900/BO; 366-5634 (Westboro).

'80 Datsun 200SX, 65K mi, black, \$1695; 429-7075 (Holliston).

'81 Subaru DL, 4-dr, 5-spd, AM/FM, 91K mi, \$750; 655-3171 (Natick).

'82 Nissan Sentra, 5-spd, blue, a/c, Alpine AM/FM/cass, \$1500/BO; 250-8306 (Chelmsford).

'82 Kawasaki KZ1000, \$1650/BO; 799-077 (Worcester).

'82 Yamaha 650 Maxim, shaft driven, \$1200/BO; 799-0772 (Worcester).

'82 Datsun 310, no rust, \$700; 473-4134 (Milford).

'83 Toyota Corolla, sedan, silver, 5-spd, stereo, radials, \$3000/BO; 695-4720 (N. Attleboro).

'83 Chevy Celebrity GL, 4-dr sedan, 33k mi, a/c, Chapman lock, stereo, V6, \$4650; 829-3100 (Holden).

'84 Ford Escort, AM/FM stereo, new tires, 45K mi, \$1500; 924-1072 (Watertown).

'84 Chevy Z28, 5 liter, 5-spd, t-tops, fully loaded, \$7400/BO; 562-7892 (Hudson).

'85 Dodge Charger, auto, ps/pb, 50K mi, gold, 2-dr, \$3400; 792-2354 (Worcester).

'86 Yamaha FZ-600, under 5K mi, warranty, \$2500; 473-4134 (Milford).

'86 Yamaha SRV, under 500 mi, w/tilt trailer, \$2700; 473-4134 (Milford).

'87 Monte Carlo SS, white, 15K mi, loaded, warranty, Chapman, cover, \$12,700/BO; 480-7123 (Marlboro).

'87 Ford Escort GL, silver, 5-spd, 2-dr, a/c, AM/FM/cass, warranty, rust prfd, \$6500/BO; 879-6145 (Framingham).

CLASSIFIED ADVERTISEMENTS

Send ads via CEO to MINI:IMG010. All ads must be submitted by 10:00 a.m. on Tuesday's in order to be included in that week's issue.

HOURS

Westboro Cafeteria, full breakfast, 6:30 a.m.-10:00 a.m.; full lunch, 11:30 a.m.-1:30 p.m.; open from 6:30 a.m.-3:00 p.m. for beverages.

Pizzeria, serving from 10:00 a.m.-2:00 p.m.

Pumpnickel's Deli, coffee & pastries, 6:30 a.m.-7:30 p.m.; full breakfast, 6:30 a.m.-10:00 a.m.; deli lunch, 11:00 a.m.-2:00 p.m.; take-out, 3:00 p.m.-6:30 p.m.; dinner, 5:00 p.m.-7:30 p.m.

3400 Computer Drive Cafeteria, full breakfast, 7:30 a.m.-10:00 a.m.; lunch, 11:00 a.m.-1:30 p.m.; open from 7:30 a.m.-3:00 p.m. for coffee & pastries.

Milford, full breakfast, 6:30 a.m.-8:30 a.m.; lunch 11:15 a.m.-1:15 p.m.; open from 6:30 a.m.-3:15 p.m. for beverages.

Southboro, full breakfast, 6:30 a.m.-10:00 a.m.; lunch 11:15 a.m.-1:00 p.m.; open from 6:30 a.m.-3:00 p.m. for beverages.