

# Mini News

## News For The Employees of Data General

---

September 4, 1987

### Evans Named VP And CFO; Ryan Appointed VP For IMG



*Mike Evans*

*Jim Ryan*

**Mike Evans** has been appointed as vice president and chief financial officer, and **Jim Ryan** has been named vice president for the Information Management Group (IMG).

#### **Mike Evans**

Mike reports to Ron Skates, senior vice president for Finance and Administration. Reporting to Mike are: Al Getz, corporate controller; Judy Lindenmayer, director of Risk Management; Ray Mann, director of Corporate Tax; and Ellen Richstone, acting treasurer.

Prior to coming to Data General, Mike most recently served as vice president and chief financial officer for Commodore International, Ltd. Before that, he served for seven years with the Consumer Electronics Division of RCA, the final four as chief financial officer; and with Arthur Young and Company for 12 years, including seven years as manager and principal.

Mike holds a bachelor's degree in accounting from Indiana University.

#### **Jim Ryan**

As vice president of IMG, Jim will oversee IMG's efforts to provide information services to Data General employees. Jim also will be responsible for IMG's development into a premier showcase of advanced communications and information services technologies for businesses interested in purchasing Data General products. He reports to Colin Crook, senior vice president of the Communications Systems Group.

Reporting to Jim are: Jagdish Dalal, director of the Information Center Technology and Control Division; Richard Gottlieb, director of the Manufacturing Field Service Development Division; Dave Hill, Facilities and Operations director; and Gordon Webster, director of the Marketing, Sales, Finance and Administration Development Division.

Jim comes to Data General after eight years at McGraw-Hill where he held a series of executive positions. Most recently, he was group vice president of the Financial Systems and Trading Services group. Prior to that, Jim was senior vice president of McGraw-Hill's Information Systems and Technology area, and vice president of Management Information Services. Before joining McGraw-Hill, Jim spent 14 years at the Singer Company. While there, he held positions as director of the Systems and Network group, vice president of Singer Business Machines, and Systems director of the Industrial Products Division.

Jim holds a bachelor's degree in management from St. Peter's College.

### Nicoletti Appointed Vice President Of Sales Support And Planning

**Tony Nicoletti** has been appointed to the new position of vice president of Sales Support and Planning. He reports to Ray Fortune, senior vice president of International Marketing and Sales. Tony will be responsible for systems and programs to provide effective administration and communication with the company's Sales area.

For the past five years, Tony had been vice president of Support Services within Field Engineering, responsible for marketing, business planning, material, logistics, administration and other support services on a worldwide basis. Prior to that, Tony was director of Support Services. He joined Data General in 1977 as a director within the Sales organization.

Tony holds a bachelor's degree in electrical engineering from the Polytechnic Institute of New York.

### Holiday Reminder

Employees are reminded that Monday, September 7, is Labor Day, a Data General paid holiday. There will then be three holidays remaining for 1987. Two personal holidays are also available for each regular employee scheduled to work more than 20 hours a week, and hired before July 1 of this year. The remaining holidays for 1987 are:

November 26 (Thursday) -- Thanksgiving  
November 27 (Friday) -- Day after Thanksgiving  
December 25 (Friday) -- Christmas Day

**Note:** Personal holidays must be taken before December 31, 1987. You may not carry over or receive pay in lieu of personal holidays.

## Users' Group To Hold Conference

The North American Data General Users' Group (NADGUG) is holding its 14th annual conference in Las Vegas, October 19-22. The conference attracts MIS directors, system managers, programmers, analysts, and engineers who use Data General equipment, as well as Data General employees. According to Barbara Hoogasian, Customer Programs administrator, attendance is expected to reach 900 this year.

NADGUG is an organization of volunteers who work together to share information between users of Data General products and the company. The group, Barbara says, has grown to include all kinds of installations - business, government, educational - and now has more than 3,000 members.

"The annual conference is the group's most visible program. We can bring together all our resources, in one place, and address a variety of interests," Barbara says. "This year, with the help of Educational Services, we are emphasizing both technical and management topics."

Exhibits and hands-on demonstrations will feature the latest hardware, software and services from Data General and other exhibitors.

Gary Allen, Marketing Communications manager for Educational Services, says the conference is the one time users of Data General equipment get together in the year. The event, therefore, is "very" important.

"The goal of the conference is to exchange information," Gary says. "We want to get the word out about Data General's strengths and direction. The people at the conference can learn from each other, as well as from the seminars we have scheduled. This year's event stresses management topics, as well as technical and end-user issues. We have arranged, as in the past, to

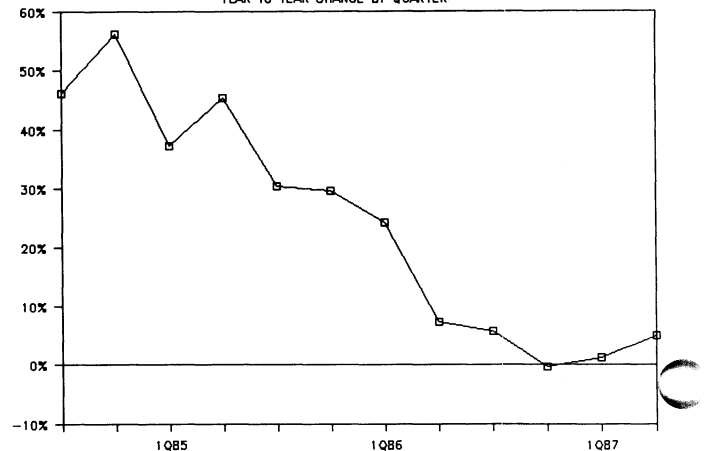
have consultants conduct some of the seminars, along with Data General employees. This approach gives a well-rounded look at Data General."

The conference will be made up of sessions and roundtables discussing everything from operating systems to database management. In addition, 14 Educational Services seminars will be held, which will include two special management seminars, "Planning: A Comprehensive and Practical Approach" and "Competing With Computing." In the exhibit area, more than 40 vendors will be on hand, as well.

Registration for this year's conference ends September 11. For more information, contact NADGUG at 3400 Computer Drive, or call (tie line) 232-4067.

## Firm Forecasts Industry Outlook

REAL GROWTH OF PDE: COMPUTERS  
YEAR TO YEAR CHANGE BY QUARTER



**Editor's note:** A number of investment firms follow the computer industry quite closely in order to report on its outlook. They use all sorts of economic data to help develop their projections. The following information, compiled by Warburg Securities, is one of many recent studies that describes the slowdown in the computer industry over the past two years and its modest recovery. The information contained here is typical of many studies which have been published of late.

Warburg Securities expects the U.S. economy to grow approximately three percent in real terms in 1987 and 1988. More importantly, real Producer Durable Equipment (PDE) spending, which has been declining at an annual rate of 4.5 percent between the second half of 1986 and the first half of 1987, is forecasted to grow at a seven percent annual rate over the next 12 to 18 months as a result of better profits from the manufacturing sector of the economy. For 1987 as a whole, real PDE is projected to grow only one percent, followed by about seven percent growth in 1988.

Hence, computer companies should experience an accelerating demand domestically as opposed to the 1985/1986 decelerating experience; however, it should not be as strong as the demand experienced during the boom of 1983/1984. As far as overseas demand concerned, which typically accounts for 40 percent to 60 percent of the total revenue, the European economies are expected to grow slightly faster in 1988 than in

1987, and the same can be said of the Japanese economy, as well.

In terms of the U.S. dollar relative to the currencies of the major industrialized countries, Warburg Securities expects the bulk of the dollar decline to be behind us," but still expects a further erosion of five percent to ten percent over the next 12 months. Since the sharply-lower U.S. dollar has been a big positive for U.S. computer manufacturers in 1986/1987, Warburg Securities expects the overseas growth to slow in dollar terms in 1988, although in terms of local currencies, growth will probably stay the same or improve. A somewhat weaker U.S. dollar as opposed to a plunging dollar will eliminate a positive for gross margins on European sales since other than IBM, most manufacturers export to Europe from dollar dominated countries for 50 percent or more of sales.

Warburg Securities estimates computer industry growth in 1988 for U.S.-based companies will approach 10 percent worldwide (expressed in U.S. dollars), with domestic growth accelerating and overseas growth slowing. As opposed to 1987 when gross and pretax margins were higher, Warburg Securities foresees no change in margin trends in 1988. A slower rate of dollar decline and higher inflation in material costs should offset any efficiencies from improved engineering and technology.

## Area Teachers Get Computerized



*Sandy Hudson gives a high school teacher a helping hand as she learns about Data General computers and CEO comprehensive electronic office software during a recent class of "Educate The Educators."*

Sandy Hudson, a member of Southboro's MIS group, is very knowledgeable when it comes to computers. She has learned so much about hardware and software in her 3 1/2 years at Data General that she is now relaying what she knows to area teachers and school administrators. She, in conjunction with Data General's program, "Educate The Educators," introduces teachers to Data General hardware and software. The program, which was started in 1983, has reached close to 400 teachers throughout the state.

"For many of the teachers who become involved in this program, working with computers brings about a sort of apprehension," Sandy says. "Some of the teachers have students who have greater computer experience than they do. The teachers, then, need to be able to communicate with the students on that level."

According to Sandy, the week-long program, taught in Southboro, is designed primarily to provide the teachers with an awareness of computers and high technology terminology.

"Not all the participants in this program have access to the kind of equipment Data General has to offer. But they know it is important to be aware of what this kind of equipment can do. They know, too, that it is imperative to learn new skills."

Each session has 12 participants from area elementary and high schools. Each teacher has exclusive use of a computer terminal for the entire week.

On the first day of class, the teachers are introduced to CEO comprehensive electronic office software. They cover electronic mail and filing. On the second day, more advanced CEO functions are addressed. The rest of the week, Sandy says, is devoted to working with various graphics capabilities; TRENDVIEW, CEO Drawing Board, and creating and working with spreadsheets and datatables.

Each exercise is intended to acquaint the computer user with the ways in which software programs are presently used in business and to suggest ways they could be used as productivity tools in the classroom. In addition to the structured activities, half of a day is devoted to allowing the students to practice these newly-acquired skills or to work on individually-chosen projects. Each class has a graduation ceremony on the last day.

"The teachers are very proud of what they learn at Data General. It's always exciting to learn new things," Sandy says. "Each class generates a team atmosphere, and each participant is eager to help the person sitting next to him or her. Everyone benefits."

## Westboro Safety Committee Is Looking For A Logo

The Westboro Safety Committee needs your help. It is seeking ideas for an official Safety Committee logo that it can use on all committee correspondence. The logo should represent employees' desires and efforts to keep Data General a safe place to work.

If you are interested in submitting a logo suggestion, please send your idea to Paul Crivello at Mail Stop C-117 in Westboro. Please include your name, department name and phone extension. The deadline for submitting your suggestions is today, September 4. All entries will be judged by Safety Committee members. The winner will be announced at the second annual Safety Awareness Day on Friday, September 18.

### Firth Named Treasury Employee Of Quarter



*Bill Firth has been named Treasury Employee of the Quarter for Data General's third quarter. An accountant in the Risk Management group, Bill was chosen for his work in establishing banking relationships and accounting and auditing techniques relating to various Data General benefit plans. Bill, who has been with Data General since 1980, is currently working toward his bachelor's degree in accounting at Bentley College. He is shown above accepting the award from Ellen Richstone, acting treasurer.*

## Employee Conference Center Open

Employees who need meeting space in Westboro can now utilize the former Guest Marketing facilities in Building 14A. To better describe this area, it has been renamed the Employee Conference Center. If you need to reserve a room for a meeting, call extension 4660. Please note that food service is no longer available for employee-only meetings.

## Benefits

### Savings And Investment Plan Reminder

Whether you are currently participating in the Savings and Investment Plan, or planning to enroll on October 1, you should be aware of upcoming plan deadlines.

**Friday, September 18**, is the deadline for submitting all new enrollments and quarterly contribution changes to the Savings and Investment Plan. The enrollment forms (used for new enrollments, changes and fund transfers) must be returned to your local Benefits department by Friday, September 18, for enrollments/changes effective October 1. If you have any questions regarding the plan, contact your local

Benefits administrator or corporate Benefits department in Westboro.

## Training

Educational Services is offering the following courses in September. Prior approval of your supervisor is required for course registration. Call (tie line) 221-1647 to enroll in these classes or other classes. All classes are held at the Education Center at 2400 Computer Drive in Westboro.

- **CEO System Manager (S221)** - Some of the topics discussed in this course are CEO installations, system startup and shutdown, mail system and word processor support functions. Employees taking this course must have thorough knowledge of CEO from a user's perspective and S209 (AOS & AOS/VS User), SH109/VS (AOS/VS Operator Training) or equivalent experience. This three-day class starts on Monday, September 14.
- **WordPerfect Word Processing (OA180)** - This three-day course teaches the features of the WordPerfect word processor and how to install it. This class begins on Monday, September 21.
- **AOS/VS Operator Training (SH109/VS)** - AOS/VS system operators will learn effective operation of Data General's AOS/VS-based system. Employees who have taken S100 (Computer Concepts) or have a functional knowledge of computer concepts are eligible for this five-day course which begins on Monday, September 21.
- **ECLIPSE MV/7800 Series Field Maintenance (H158)** - This course teaches how to install and configure a Data General ECLIPSE MV/7800 series computer system, load and run diagnostic programs, and perform system maintenance. The class also introduces the ECLIPSE MV/7800 series 32-bit architecture, power subsystem, SCP operations, upgrade procedures, and removal/replacement procedures. This five-day class begins on Monday, September 28.
- **AOS/VS System Programming, Part 2 (S310/VS)** - This course teaches the advanced system programming features of the AOS/VS operating system. This five-day class begins on Monday, September 28. Employees should have taken S309/VS (AOS/VS System Programming, Part 1) or have equivalent experience.
- **Decision Base: Spreadsheet, Data Tables, Charting (OA200E)** - This course teaches employees how to build a spreadsheet and how to calculate numerical data within the spreadsheet. This class begins on Tuesday, September 29, and runs for three days.

## Toastmasters' Meetings To Resume September 9

The Data General Toastmasters Club will resume its meetings in Westboro on Wednesday, September 9, at noon. Meetings are held in the MTI Room A, near the Information Resource Center in Building 14A. These meetings will allow employees to practice speaking and presentation skills in a constructive environment. Meetings are held every Wednesday at the same time and in the same location. For further information, contact Lydia Losch, club president, via CEO at host system Challenger, or at extension 3363 in Westboro.

## Keep A Lid On Information

In order to remain in this highly-competitive industry, Data General must continually invest in new and enhanced products. Employees from all areas of the company such as new product development, Manufacturing, Marketing, Sales and the various administrative support groups handle sensitive information on a daily basis that is critical to the success of the business. That is why the company holds proprietary information as one of its most valuable assets.

Data General proprietary information is defined as any technical, business or other Data General information or material that the company considers sensitive, secret, competitive or private, which, if in the hands of a competitor, could weaken Data General's competitive position. A few examples are: costs and methods of manufacturing, pricing policies, business forecasts, employee lists, customer lists, patent applications, unannounced products, present and future business plans, and the Data General telephone directory, which contains confidential information.

Employees also should be careful when handling incoming calls in which the caller requests information about Data General to be given over the telephone or by mail. In some instances, people calling in have used false names in an attempt to get confidential information. Employees should be aware of such situations.

### **New Phone Number**

The Tampa, Florida, office has a new phone number effective September 12. The new number is (813) 286-2515.

## Activities

### **York Animal And Amusement Park**

Due to the bad weather conditions during the summer outing held at York Animal and Amusement Park on Saturday, August 22, Data General employees will be

admitted to the park free through September 7. Employees may enjoy unlimited rides, free of charge, except on the Grand Prix race track, where only *one* ride will be authorized. Miniature golf will be on a pay basis.

Free zoo admission will be valid through October 12, depending on weather conditions. For free individual or family admission, ***you must present your Data General identification badge*** at the park office, located by the York Beach entrance.

### **3,000 Attend Rocky Point Outing**



*Several thousand employees and their families enjoyed the last of the Data General summer outings, which was held last Saturday at Rocky Point Park in Rhode Island. Employees and their guests were treated to lunch and dinner, and enjoyed the park's many rides. Employees who did not attend the outing may use their tickets for admission rides and meals for the balance of this season and until June 30, 1988. Tickets will be honored during any regularly-scheduled operating day, except when the park is closed for private parties. Employees are advised to call the park before going, because this is a popular time of year for large company parties. The number is (401) 737-8000.*

### Discount Tickets For Renaissance Faire

Discount tickets for the annual King Richard's Renaissance Faire, which opens Saturday, September 12 in South Carver, are now available for employees through the Data General Employee Activities Committee.

The Faire features jugglers and jesters, storytellers and magicians, music and dance, food and drink, jousting matches, games, crafts, and more, all in the spirit of the Renaissance era. Adult discount tickets may be purchased at \$6.00 each (regular price \$9.75). Children's tickets (age 2 to 10) are \$4.00 each and may be purchased at the time of admission. Children under 2 are admitted free. These discount tickets are valid on the following dates: September 12, 13, 19, 20 and 26, and October 3, 10, 17, 24 and 31.

Adult discount tickets may be obtained by sending a check, payable to Data General Activities Committee, to King Richard's Faire at Mail Stop 4-78A in Southboro. Please include a stamped, home-addressed envelope.

### Sign Up For Aerobics Next Week

Employees wishing to enroll in the aerobics classes may sign up on either of the registration days being held next Wednesday, September 9 and Thursday, September 10, at 5:15 p.m. in the main cafeteria in Westboro. There are no longer any mail-in registrations.

**Dancin' Aerobics** and **Free Style Aerobics** are offered twice a week in the main cafeteria at 5:20 p.m. for an eight-week period. Dancin' classes will take place every Monday and Wednesday starting Monday, September 14. Free Style classes will be held every Tuesday and Thursday starting Tuesday, September 15. There will be no classes on registration days. All classes are taught by qualified exercise instructors from the Greater Worcester YMCA.

### Dasher Race Entry Deadline Is Today

Today, September 4, is the last day to enter the Dasher Road Races scheduled for next Friday, September 11. Entry forms, which can be picked up in the literature distribution racks outside the three eateries in Westboro, should be sent to the Dasher Road Race, Mail Stop E-111.

Anyone interested in serving as a race day volunteer should contact Eric Engberg at extension 6521 in Westboro. Also, there will be a meeting of Race Day volunteers at 4 p.m. next Thursday, September 10, in the deli in Westboro.

Competitor numbers will be sent out several days before the race. Cyclists will have numbers 101-199; the 3-mile runners will wear numbers 301-599; and the 10-kilometer runners and biathletes will race with numbers in the 601-699 series. Eric, Race Committee chairman, urges each participant to check the number assigned to him/her. "All races start simultaneously," says Eric. "The assigned numbers are the only way we have to determine the results."

### Planning A Fall Trip To The Vineyard?

A \$15 per couple per day discount on room rates is available for employees who wish to stay at the Edgartown Heritage Hotel on Martha's Vineyard. This full-service hotel is located on upper Main Street in Edgartown. Employees may take advantage of the discount by presenting their Data General identification badge when checking in. For more information, interested employees may contact the hotel at (617) 627-5161.

### Data General Softball Standings

The following are the Data General Softball League standings as of Friday, August 28:

#### American League

	WON	LOST	TIED	PCT
<b>Division A</b>				
D.G. I.M.G.	12	3	1	0.781
S.I.E.	10	5	0	0.667
Hit Men	9	5	0	0.643
Still Wellesley	7	7	0	0.500
Devios	5	10	1	0.344
<b>Division B</b>				
Ants	10	5	1	0.656
24 & Under	8	7	1	0.531
D.G. Red Ties	7	7	1	0.500
Mongrels	4	9	1	0.321
Rodney's Kids	3	13	0	0.188
<b>Division C</b>				
T-Bones	13	2	0	0.867
Off Base	12	2	1	0.833
Slugs	7	6	2	0.533
Cadavers	8	8	0	0.500
Bat Busters	4	10	1	0.300
<b>Division D</b>				
Base Invaders	13	3	0	0.813
Misfits	8	6	2	0.563
Swinging Bubatos	6	9	0	0.400
DG/Direct	6	10	0	0.375
Eclipse Eng.	3	12	0	0.200
<b>Division E</b>				
We Came In First	8	7	1	0.531
Byte Blasters	7	8	1	0.469
Short Hops	4	10	2	0.313
N.O.T.A.	2	14	0	0.125

#### National League

Nuked	11	5	0	0.688
STK/RM9	11	5	0	0.688
Building 5	11	5	0	0.688
Maintenance	9	7	0	0.563
Special Systems	6	10	0	0.375
Bubbas	4	12	0	0.250
Runagades	4	12	0	0.250

## Data General Softball Season Comes To A Close

The Data General Softball League recently finished its season with all-star players from the various divisions squaring off in final games. Many employees and their families came to watch the games, which were held at the Knights of Columbus field in Ashland. Below are the names of the all-star players and scenes from the games.

### **American League-East**

D.G. I.M.G. - \*Ty Rheaume, Joe Fougere  
Hit Men - Dick McCarrick  
S.I.E. - Mark Coggeshall  
Still Wellesley - Dave Manjarrez  
Devios - Jeff Blakeslee  
T-Bones - Debra Cardin, Karl Taylor  
Off Base - Steve Davi  
Cadavers - Steve Dupre  
Slugs - Scott Sandler  
Bat Busters - Scott Ayers  
N.O.T.A. - Beth Maclean  
Short Hops - Jerry Gormley

### **American League-West**

Ants - John Herman, Tom Karolyshyn, \*Rick Morris  
24+ Under - John Averill  
D.G. Red Ties - John O'Connor  
\*Longrels - Geroge Gardner

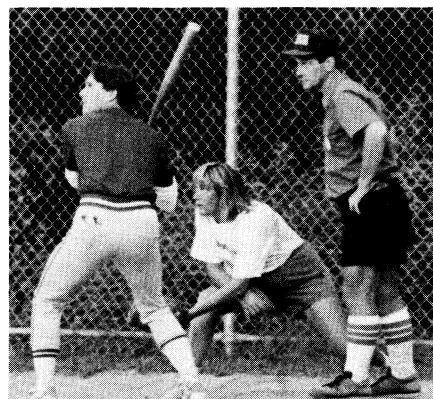
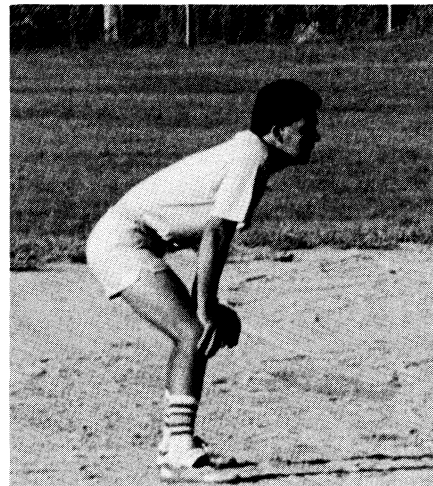
Rodney's Kids - Kevin Lemire  
Base Invaders - Steve LeBlanc, Bob Sullivan  
Misfits - Don Lavalle  
Swinging Bubatos - Brian Nash  
DG/Direct - Tim Mahan  
ECLIPSE Eng. - Charlie Hopkins  
W.C.I.F. - Kevin Brassard  
BYTE Blasters - John Ragnini  
Final Score - West 12, East 5

### **National League-East**

Building 5 - Ron Jones, Dan Powers, Tom Collins  
Bubbas - Paul Fox, Tom Liddy, Dan Fontes  
Maintenance - Kurt Kempiski, Kerry Moore, Bob Funk, \*Jim Shea  
Runagades - Dave Marieni, Chuck Stover, Rich Cooper

### **National League-West**

Nuked - Geoff Slachta, Dennis Dupre, Bill Christensen, Walt Esker  
Stockroom 9 - Steve Jablonski, Chris Lewis, Paul Galaher, Toni Oliveri, \*Bill Zechello  
Special Systems - Kevin Marshall, Phil Roux, Tom Wytiaz  
Final Score - West 13, East 12  
\*Coach



## MARKETPLACE

### YARD SALES

**Multi-Family**, Saturday, September 5, 9 am to 2 pm, Westminster Way, Westboro, toys, clothes, household items, 366-0358 (Westboro).

**Yard Sale**, September 5, 6 & 7, 9 am to 3 pm, assorted items, 30 Jarbrook Road, Holliston, off Rt 126.

### FOR RENT

**Chalet**, White Mts, NH, 3 bdrm, 2 baths, frpl, \$300/wk, \$200/3-day wknd, 696-6065 (Milton).

**Apartment**, 4 rm, w/bath, incl heat/hot water, \$400/mo, 473-7986 (Milford).

**Apartment**, 2 family home, 7 rms, 4 bdrm, 1st flr, 1/1/2 baths, garage, avail October 1, \$1200/mo + util, 965-1746 (Newtonville).

**Town House**, 2 bdrm, lvg rm, din rm, 1 1/2 baths, laundry, deck, pool/tennis, Londonderry, NH, \$750/mo + util, 395-4593 (Medford).

**Condominium**, 2 bdrm, 2 baths, 2 balconies, laundry, parking, \$1100/mo incl heat/hot water, 323-8409 (W. Roxbury).

**Apartment**, lg refurbished basement apt, kitch w/appl, hook-up for wash/dry, 1 bdrm, plenty closet space, \$550/mo + util, 481-5141 (Marlboro).

### WANTED

**35mm Camera**, w/built-in or hand-held light meter, 852-6002 (Worcester).

**Dry Cordwood**, delivered and cut, does not have to be split, 393-2475 (Northboro).

**Roommate**, to share 2 bdrm condo, dish/disp, cbl TV, pool/tennis, laundry, non-smoker, \$325/mo + 1/2 util, flex leasing, 366-9430 (Westboro).

### FOR SALE

**Basement Bulkhead Hatchway**, metal, 52" x 70" x 22", \$35/BO, 366-0358 (Westboro).

**Truck Camper**, 8', slps 4, 3 burner stove, sink & ice box, wood frame & cabinets, incl camper jacks, \$400/BO, 365-5324 (Clinton).

**Items**, Mediterranean 84" couch w/pecan wood arms/legs, matching red velour chair, \$150/BO; various decorative items; 2 storage box couches w/wall/set cushions, BO, 473-0438 (Milford).

**Items**, Herculon sofa & chair, \$500; Ethan Allen rock maple coffee tbl/end tbl, \$400; 2 solid brass lamps, 1 flr/1 tbl, \$100; oriental rug & pad; 5' x 8', \$300, 366-3956 (Westboro).

**Casio Solar SCI Calculator**, 79 function, w/book & case, \$10, 485-7490 (Marlboro).

**Items**, fur coat, blk rabbit, mid-length, sz Lg, \$50; turntable, Sony, PS LX-2 dir drive, \$75; drums, Tama 5 pc w/roto toms + acces, \$1500, 485-4007 (Marlboro).

**Wedding Gown**, sz 16, tea-length, ivory-lace, long sleeves, \$200, 877-0119 (Framingham).

**Items**, canvas tents, 1 9' x 12' w/windows & floor; 2 7' x 7' pup; 1 7' x 7' pyramid; 1 9' x 12' tarp; 459-6685 (Lowell).

**'86 Rockwood Camping Trailer**, 10' canopy screen rm, slps 6, 10,000 btu heater, model 2080, \$5200, 891-4836 (Waltham).

**House**, 9 rm Colonial, 4 bdrm, office, laundry, den, deck, 1/2 acre, \$289,900, 653-9559 (Wayland).

**House**, English Tudor split, cathedral ceilings, 3 bdrm, 1 1/2 baths, garage, frpl, Indscpd, \$172,900, 842-6872 (Shrewsbury).

**Items**, 2 snow tires, B78-13, mtd/balanced, Colt/Plymouth Arrow; suspended ceiling tiles, 100 + pieces, \$1/ea, 842-6872 (Shrewsbury).

**Items**, 10" tbl saw w/stand, 5000rpm, 11 amp, 2 hp motor; 4" tbltop Rockwell jointer, \$200/both, will separate, 234-9694 (Northbridge).

**House**, Gambrel Cape, 3-4 bdrm, 2 baths, frpl, 2-car garage, 15 min to Webo, \$188,900, 842-0631 (Shrewsbury).

**Items**, boat trailer, bunk rollers, for 12' to 16' boat, up to 1700 lbs; chrome spoke wheels, 5, for '63 Jaguar E type, 829-5665 (Holden).

**Portable Air Compressor**, 3/4 hp, \$100, (603) 465-2034 (New Hampshire).

**Items**, Haitian cotton sleeper sofa & love seat, \$400/both; lg dk pine rocker, \$65; exercise trampoline, \$15; ladies Fuji 10 spd bike, \$70, 460-9448 (Marlboro).

**19' Bayliner Bow-Rider**, '84, 140 hrs, ez-loader trailer, 125 hp outboard, w/anchors, US Coast Guard equip, spare tire to trailer, \$7750, 366-5559 (Westboro).

**Electric Baseboards**, many lengths, \$10/ea, 529-4427 (Upton).

**Items**, electric lawnmower w/bag, \$30; pr 3-way speakers, \$40; Hirsch saw tbl, \$15, 879-5919 (Framingham).

**Denon Turntable**, DP-7F, fully auto, w/Ortofon cartridge, used 3 x, BO, 853-0937 (Worcester).

**Items**, white porcelain bath sink w/fixtures, \$35/BO; kitch dr combo, storm/screen, \$10/BO; 2 14" Ford wheels, 5 lug, \$15/BO, 256-3775 (Chelmsford).

**Living Room Set**, gold/rust lvg rm set + 1 blue chair, 3 glass-top Italian tbls, 2 lamps, lrg gold framed mirror, \$1500/all, 842-6872 (Shrewsbury).

**Guitar Amplifier**, Peavey Encore 65, all tube, 2 inputs, 12" speaker & more, \$279/BO, (603) 893-0217 (Salem, NH).

**House**, New Boston, NH, saltbox, 4 bdrm, 2 1/2 baths, 2 car garage, new construction, \$195,900, 473-2120 (Hopedale).

### AUTOS

**'66 Oldsmobile F-85**, 4 dr sedan, 42K mi, little rust, V8, PS/PB, \$2000/BO, 256-3775 (Chelmsford).

**'70 Camaro**, 307 auto, BO, 386-7170 (Fitchburg).

**'73 Dodge Dart**, 4 dr, 225 eng, new tires, \$500, 476-2104 (E. Douglas).

**'75 Chevrolet Impala**, 4dr, 350 V8, 56K mi, AM/FM, AC, \$500/BO, 485-4007 (Marlboro).

**'76 GMC Truck**, w/cap, auto, pw steering, \$500, 839-6460 (Grafton).

**'76 Triumph Trident 750 Motorcycle**, needs repairs, BO, 757-6937 (Worcester).

**'77 BMW 321i**, auto, snrf, rebuilt eng, extras, \$5700/BO, 853-9606 (Worcester).

**'78 Cadillac Coupe**, blk/blk new paint, many new parts, 752-4243 (Worcester).

**'78 AMC Concord**, auto, PS/PB, AM/FM, cass, new tires/muffler, cloth int, \$895, (401) 769-8037 (Woonsocket, RI).

**'80 Chevrolet Camaro**, V6, standard, 3 spd, AM/FM, \$2500, 476-7413 (E. Douglas).

**'81 Renault 18i**, 4 dr, 4 cyl, 5 spd, 65K mi, BO, 485-4007 (Marlboro).

**'81 Dodge Aries**, 4 dr, auto, 53K mi, AC, stereo, snrf, rear defrost, extras, \$2750, 459-6685 (Lowell).

**'81 Honda CB900 Custom**, 7400 mi, \$2000/BO, 842-5394 (Shrewsbury).

**'82 Datsun 310**, 4 dr hatch, 5 spd, AM/FM, 43K mi, \$3350, 655-3039 (Natick).

**'82 Suzuki GS450L Motorcycle**, 7K mi, new tires, \$750, w/new Bell Aerostar helmet, \$850, 879-4030 (Framingham).

**'83 Plymouth Reliant**, auto, 4 cyl, 4 dr, 59K mi, AM/FM stereo, \$3200/BO, 685-2194 (Methuen).

**'83 Chevrolet Cavalier Wagon**, 54K mi, auto, \$3100, 747-1452 (Plymouth).

**'84 Nissan 200SX**, loaded, new tires, 842-5144 (Shrewsbury).

**'84 Mercury Topaz**, AC, cassette, cruise, 476-7536 (E. Douglas).

**'85 Subaru GL**, blk, 4 dr sedan, AC, pwr windows/locks, 5 spd, ext warranty, 20K mi, \$7500/BO, (401) 726-4621 (Rhode Island).

**'85 Dodge Colt**, 53K mi, 4 spd, AM/FM cass, \$2500/BO, 529-3434 (Upton).

**'85 Toyota Celica GT Liftback**, 33K mi, 5 spd, AC, cruise, \$8895/BO, 926-9538 (Watertown).

**'86 Toyota Supra**, targa top, red pearl w/leather int, loaded, 23K mi, nose & car cover, \$16,900/BO, 899-4368 (Waltham).

**'87 Hyundai**, 5 dr hatch, GLS model, standard, PS/PB, rust proofing, 6200 mi, \$7000, 460-1767 (Marlboro).

### HOURS

**Westboro Cafeteria**, full breakfast, 6:30 a.m.-10:00 a.m.; lunch, 11:30 a.m.-1:30 p.m.; open from 6:30 a.m.-3:00 p.m. for beverages.

**Pizzeria**, serving from 10:00 a.m.-2:00 p.m.

**Pumpernickel's Deli**, Coffee & pastries, 6:30 a.m.-7:30 p.m.; full breakfast, 6:30 a.m.-10:00 a.m.; deli lunch, 11:00 a.m.-2:00 p.m.;

Take-out, 3 p.m.-6:30 p.m.; dinner, 5 p.m.-7:30 p.m.

**3400 Computer Drive Cafeteria**, full breakfast, 7:30 a.m.-10:00 a.m.; lunch, 11:00 a.m.-1:30 p.m.; open from 7:30 a.m.-3:00 p.m. for coffee and pastries.

**Milford**, full breakfast, 6:30 a.m.-8:30 a.m.; lunch 11:15 a.m.-1:15 p.m.; open from 6:30 a.m.-3:15 p.m. for beverages.

**Southboro**, full breakfast, 6:30 a.m.-10:00 a.m.; lunch 11:15 a.m.-1:00 p.m.; open from 6:30 a.m.-3:00 p.m. for beverages.

### MINI NEWS

All ads must be submitted in writing and include employee's name, home phone and extension number. Ads will be stamped with the time and date as they are received and will run on a first come basis. Send ads to Lauren Sasseville, MS A-235 or CEO SASSEVILLE L:MSIS03