

Mini News

News For The Employees of Data General

September 13, 1985

Treasury Employees Receive Award



Vice President George McClelland presents the "Treasury Person Of the Quarter" award to Ann Marie Belforti (left) and Janice Cole for their outstanding contributions to the Treasury department.

Ann Marie Belforti and Janice Cole of the Treasury department in Westboro are the first recipients of the "Treasury Person Of The Quarter" award, sharing the award for their outstanding contributions to the group. Vice President George McClelland remarks, "Ann Marie and Janice, exemplifying the outstanding attitude and performance of Data General employees, are recognized for their achievements and contributions."

Ann Marie, Cash manager, received the award for her role in managing company investments and transactions without error. Ann Marie oversees Data General's worldwide cash operations including all wire transfer activity, domestic banking relationships and all bank documentation.

Janice, Regional Leasing manager in the Customer Finance group, was recognized for her efforts in structuring and negotiating a multimillion dollar leasing contract with the state of Washington's Department of Licensing. Janice is responsible for the leasing of Data General equipment on a regional basis and to state agencies across the United States.

Scholarship Test Dates For High School Juniors

If you are a regular full-time Data General employee and have a child who will be graduating from high school in 1987, now is the time to consider applying for a Data General scholarship. The Scholarship Program is a Data General Benefit established for children of Data General employees. Each scholarship ranges from \$500 to \$2000 per year for up to four years, or until bachelor's degree requirements are completed, whichever comes first.

Students applying for a Data General scholarship must take the PSAT (Preliminary Scholastic Aptitude Test) during their junior year in high school. This year, the test will be administered in high schools throughout the country on October 19 and October 22. Interested students should contact their guidance counselors as soon as possible to register for the PSAT.

Keep in mind that application for a Data General scholarship must be made during the students *junior* year in high school, so even those students who are currently undecided as to whether or not they want to attend college should be encouraged to take the PSAT in October.

Applications for the Data General Scholarship Program are available from the Benefits and Personnel departments.

Employees are reminded that Saturday, September 28 is the last day of fiscal year 1985. For your convenience, the fiscal 1986 calendar is printed on the back page of this issue of *Mini News*.

People

In Manufacturing...

Greg Schumacher has been promoted to manager of the Software Systems department in Design Assurance Engineering (DAE) reporting to DAE Manager Joe Cox. Greg has been with Data General since 1979 working as a software engineer, and has a BA in computer science and history from the University of Maine at Orono.

Reporting to Greg is Howard Drake. Howard joins Design Assurance Engineering as a principal software engineer responsible for special MS DOS-related projects and CEO Comprehensive Electronic Office testing. With Data General since 1979, Howard most recently worked as a technical support specialist in the Technical Products Division and prior to that, as a material handling specialist in Corporate Package Engineering. He holds a BA and a BS in mechanical engineering from Lehigh University and a MSCS from Union College.

FE Employees Of The Quarter

The following Field Engineering employees have been selected as Employees of the Quarter for Quarter 3 of fiscal year 1985 for performance above and beyond normal job responsibilities:

Milford

Claire Bernard
Sharon Bousquet
Russell Breault
Gerald Capra
George Coan
John Geary
Cathy Geffers
Richard Hasey
Sherri Heath
Ken Hubener
Mark Larrivee
Irene Lepovsky
Richard Leighton
Michael O'Toole
Beverly Recchia
David Stranahan
Richard Stranieri
John Veneski
Carl Young

Westboro

Paul Devinent

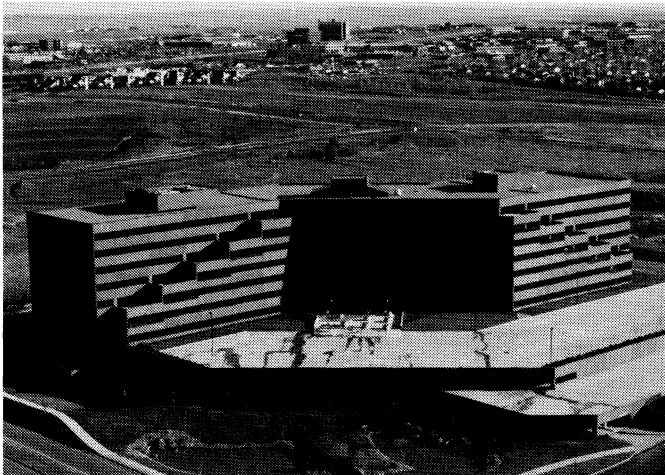
Atlanta

Sandra Evans
William Fisher
Steve McDaniel
James Garner

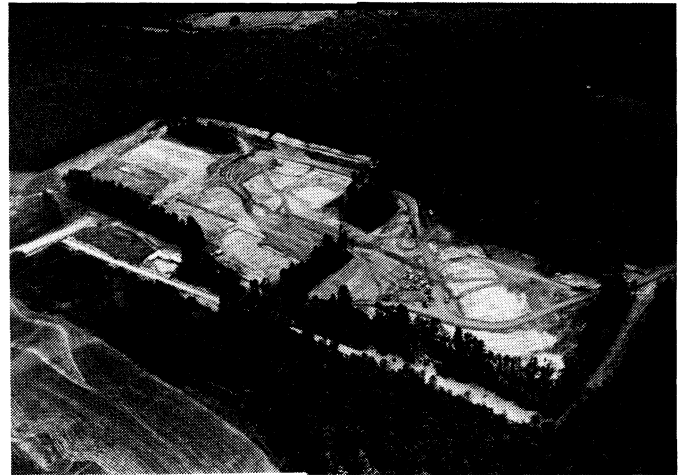
Fountain

John Ragan

Data General In Colorado/New Hampshire



Data General's Technical Products Division (TPD) recently moved to its permanent site, located in Englewood, Colorado, a southeast suburb of Denver. The move, from a temporary facility, was accomplished in less than two days with the CEO Comprehensive Electronic Office host system, ROCKY, working on the first day of occupancy. TPD inhabits one-and-a-half floors of a nine-floor office building, including space for employee cubicles, conference rooms, computer room and an equipment demonstration room.



Construction currently is underway of a 300,000 square-foot Durham, New Hampshire facility which will house a product development center, manufacturing and offices. Occupancy of the new site is scheduled for the summer of 1986. Mass Storage Engineering, which is relocating to the Durham facility, is currently based in a temporary office in Newington, New Hampshire.

Milestones

Congratulations to the following employees celebrating service milestones in September.

Westboro

Fifteen Years

Richard Brown

Ten Years

Karen Janda
David Cohen
Joan Sukey
Michael Ethier
Anne Pelon

Terese Borra
Donald Dudley
Joel Wall
Peter Bergquist
Harvey Martin

Five Years

Dennis Bosak
Rosemary Rocha
Andrew Benassi
Philip Schwarz
Donald Wagner
Peter Polachi
James Luchford
John Williams
Raphael Bailey
Robert Pittman
George Waggoner
Mary Ellen Giasi
Kevin Johnson

Bonnie Billings
Glori Sundberg
Peter Monwai
Richard Dustin
Brian Schimpf
John Clark
Ivan Weiss
Paul Sharples
Kathleen Benoit
Robert Wilkinson
Ronald Kemper
Frank Jacoby

Millford

Ten Years

Arjorie Brown
Thomas Carey
Terry Neely
Elvis Raper
Larry Breeden

Kenneth Linell
Jay Appell
David Heinig
Gene Corridori

Five Years

Marilyn Hofstetter
Christopher Strug
Richard Cote
Dwight Goss
Gerald Papa
Bruce Hodgdon
Howard Bechert
Joseph Sale
Fredrick Fisch
Patricia Walker
Paul Kurzdorfer

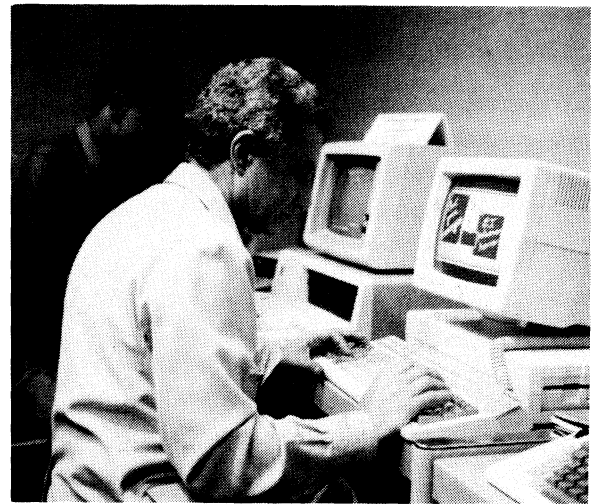
Ronald Cook
Dean Mathieu
Steven Barnum
Thomas McClintock
Francine Drew
James Helm
Nancy Sensenig
Joseph White
James Clary
Daniel Cordelli

Employees should be careful when walking, use good sense and be courteous at all times. Walking three and four abreast creates a hazard, not only for you, but also for drivers. This is especially true when two vehicles are traveling in opposite directions.

Corporate Safety and Security suggests that employees walk safely by:

- Never walking more than two abreast, and
- Always leaving sufficient room for two vehicles to pass abreast of each other safely.

Health Officials Visit Data General



Worldwide health officials from third-world nations visited Data General Westboro and Southboro this week to gather information on how personal computers can help improve health services in their countries. About 20 representatives from such countries as Kenya, India, Egypt and Haiti are in the U.S. this month participating in a three-week seminar sponsored by the non-profit organization, Management Sciences for Health. They heard Desktop Division Marketing Manager Agnes Imregh describe the market for personal computers and the DATA GENERAL/One, in particular. Following the presentation, the group received a demonstration of the DATA GENERAL/One and the recently-introduced DASHER/One. They wrapped up their morning at Data General with a tour of Southboro Buildings 4, 5 and 6 for a perspective on manufacturing and distribution.

Westboro

Walking In Safety

Nice weather prompts many Westboro employees to "get away from it all" - if only for a few minutes - walking around the building on their lunch breaks.

If you are a walker, you should remember that the roads around the building are intended primarily for two-way vehicular traffic. There are no provisions for pedestrians.

Mini News is published weekly for the employees of Data General-Westboro. Material may be submitted for publication to Joy Ibraham, extension 4705, MS A235. Data General - An Equal Opportunity Employer.

Run Out Of Space? How To Store Material

When office space becomes limited, records, files, magnetic tapes, discs and other material containing important information can be sent to a central location for storage. These archives, stored at Instar Corporation of Malden, Mass., can be placed and retrieved whenever needed, freeing departments to store more current records.

When material is to be stored or retrieved from Instar, a Records Control form must be completed and returned to Records Coordinator Janet Tycks of Corporate Safety/Security at Mail Stop MW5, extension 2644 at Data General-Milford. According to Janet, the four-part form should be filled out completely to ensure that the material put away is properly stored.

"One copy of the form is attached to the box containing the material to be stored," says Janet. "The second copy is kept on file by the department, while copies three and four are to be placed inside the box. It is important that the form is typed to eliminate any guesswork."

When filling out the form, make sure to place your department's cost center number in the space next to "Add. Ident.," section number 3 on the form. Spaces 4 and 5 can be left blank. "The most important part of the form is section 6, 'R.S. No.,'" explains Janet. "In this space goes the code to let departments know what is in the box and how long that box is to be stored. These code numbers are supplied by Corporate Safety/Security when the forms are filled out. Departments also should take care to list on the form the content of each box so the proper material is received whenever it needs to be retrieved."

INSTAR 1		NOTE →		USE TYPEWRITER PLACE LABEL ON CARTON RETAIN 2ND COPY PLACE ALL OTHER COPIES (INTACT) IN CARTON	DO NOT SNAP APART
instar	BAY	SHELF	BOX NO. 277457		
COMPANY NAME	1	DIV./DEPT.	2		
ADD. IDENT.	3	PROJECT NUMBER	4	CONTRACT NUMBER	5
RECORD YEAR	7	RETENTION PERIOD IN YEARS	8	R. S. NO.	6
			9	+	1 =
			DISPOSAL DATE		
			10		
DESCRIPTION OF RECORDS					
1					
RESPONSIBLE SUPERVISOR	TEL. EXT.	RECORDS COORDINATOR	DATE		
11	12	13	14		
INSTAR USE ONLY					
(REVERSE SIDE IS GUMMED) CARTON LABEL					

University Of Missouri Receives Data General Equipment



Wes Redfield (right), manager of Education Marketing in Technical Products, discusses Data General's recent ECLIPSE MV/10000 computer donation to the University of Missouri-Rolla with John Park, Interim Chancellor of Academic Affairs. Valued at more than \$400,000, the donation allows for the establishment of an on-campus "Data General Systems Design Laboratory" providing students, faculty and researchers with a unique facility for systems design studies and development. Also in attendance at the dedication ceremony was Bob Beauchamp, senior section manager of Large Processor Development at Data General and 1978 University of Missouri-Rolla graduate.

Technical Seminars Offered

Five of Educational Services' most successful Technical Seminars will be conducted at the Education Center at 2400 Computer Drive in Westboro during September. Like all Educational Services courses, Data General employees who wish to enroll in these seminars must have prior approval of their supervisor. To enroll or for more information, call Central Registration at extension 4079 in Westboro. Class size is limited, so call today to reserve your place!

Start Date	Seminar Number	Seminar Title
9/16	SM230	Intro to the MV/UX Environment
9/19	SM131	C Language: An Introduction
9/18	SM412	AOS/VS System Performance Workshop
9/23	SM233	Local Area Network Design
9/30	SM130	Intro to Ada Concepts & Programming

Hardware Maintenance Classes Scheduled

The following Hardware Maintenance training courses have been scheduled by Educational Services and are offered to Data General employees. These classes teach repair and maintenance techniques for various models of Data General processors, peripheral devices and systems.

All courses are held at the Data General Hardware Education Center at 2400 Computer Drive. Courses vary in length; however, most are five days long. For more information or to enroll, call Central Registration at extension 4079 in Westboro. Your supervisor's approval is required prior to registration.

Start Date	Course Number	Course Title
9/16	H104	ECLIPSE S130, S200, S230 Field Maintenance
9/16	H105	NOVA 3 Field Maintenance
9/16	H321	ECLIPSE S140/NOVA 4 S/X Field Maintenance
9/23	H100	Data General Computer Architecture
9/23	H122	DESKTOP GENERATION Field Maintenance
9/23	H203	Disc 10 MB (6045 Series)
9/23	H304	ECLIPSE S130, S200, S230 Component Level
9/23	H305	NOVA 3 Component Level
9/30	H101	Diagnostic Operating System User
9/30	H204	6060/6061/6067/6122 Disc Field Maintenance
10/3	H221	DASHER D2XX, D4XX Field Maintenance
10/4	H123	DATA GENERAL/One Field Maintenance
10/7	H100	Data General Computer Architecture
10/7	H236	6236/6237 Disc Field Maintenance
10/14	H217	6125 Mag Tape Drive Field Maintenance
10/16	H221	DASHER D2XX, D4XX Field Maintenance
10/21	H100	Data General Computer Architecture
10/22	H128	ECLIPSE MV/8000 Field Maintenance
10/28	H101	Diagnostic Operating System User
10/28	H121	ECLIPSE S140/NOVA 4 S/X Field Maintenance
10/28	H214	6020/6026 Mag Tape Drive Field Maintenance
10/31	H221	DASHER D2XX, D4XX Field Maintenance
11/1	H123	DATA GENERAL/One Field Maintenance

chip design is crucial. Engineers are currently faced with a cycle whose steps are ironically at variance with each other - as chips become more complicated, there is more competition to produce them smaller and faster. Relying on manual methods to speed up production has proved insufficient.

One company which has been quite successful in addressing this problem is Master Images, a specialized computer-aided-design (CAD) and photolithography service for the IC industry. Based in San Jose, California, Master Images incorporates an automated approach to manufacturing. Significantly, it also is one of a handful of companies using a new electron beam (E-beam) procedure to produce masks, the shields that determine the pattern of electrical interconnections on a piece of silicon. The combination of automation and new technology has proved extremely beneficial to the company.

"We've recognized that there has been little effort to automate the steps from creating the schematic to fabricating the wafer and testing the chip," claims Norm Austin, vice president of electron beam operations. "Previously, the focus was on the process of going from the schematic drawing to the computer-aided drawing. It is our contention that software applications provide the greatest opportunity for leadership in the mask-making industry."

Master Images ties together the software used in mask operation for ICs, allowing the manufacture of more complex chips much more quickly, and with greater accuracy. To achieve this, they use the power of a superminicomputer.

There were several reasons behind the original decision to go with a 32-bit computer. Transforming design verification programs to E-beam format, for instance, proved time-consuming on most CAD systems.

There was also the consideration that data was continually transferred between the CAD, Customer Service, E-beam and Inspection departments. Automation would simplify this transferral and the complex manual paperwork as well.

Finally, Master Images needed an automated solution for production control to oversee the progress of each mask. Since each mask is unique, production control in a mask shop is very different from a normal manufacturing process, where duplicate products might be made in quantity.

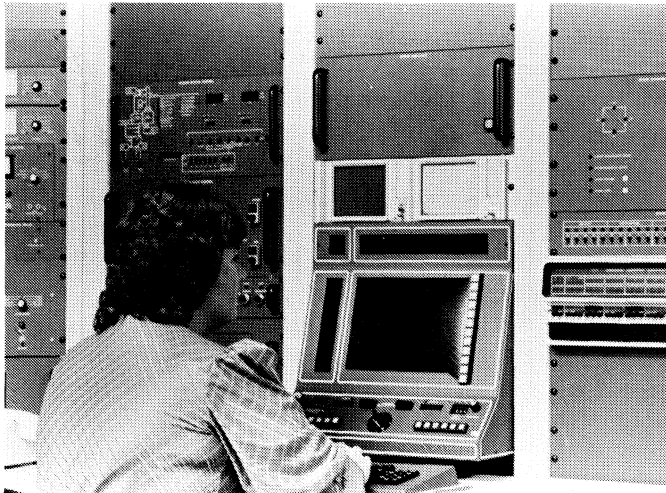
"Ideally," says Norm, "a single host computer networked to the other systems would allow Master Images to implement all of these opportunities. In evaluating hardware for an automated solution, we concentrated on price, performance, and software availability."

The solution was a system based on Data General's ECLIPSE MV/10000 computer, linked by Ethernet to two Perkin-Elmer computers, two Calma GDS engineering workstations for data files, photo reduction and an on-line status reporting system.

How Data General Products Are Used

Master Images Staying Ahead in The IC Industry

In the complex industry of integrated circuit (IC) manufacturing, keeping up with the rapid pace of



With the help of a Data General Eclipse MV/ 10000 computer, Master Images has reduced the time required to produce integrated circuits.

Says Norm, "An important consideration was the fact that any Data General 16-bit RDOS program would run on the ECLIPSE MV/ 10000 with the use of a software program called RDOS Agent. We already had a Data General 16-bit ECLIPSE S/ 140 in place, and wanted to upgrade to the power of a superminicomputer. The ability to run RDOS or AOS programs makes the system extremely flexible."

In a typical Master Images project, a client approaches the company with a circuit design. Master Images engineers put the drawings into computer data form on the Calma GDS workstation, which produces pattern file tapes containing the information of the circuit to be produced. Assembling the file tape and custom specifications is the responsibility of the E-beam Planning department, which, in turn, hands the information over to the Data Preparation department. This latter group implements it through software developed for the system.

The ECLIPSE MV/ 10000 computer performs the computer-intensive tasks without interrupting the E-beam machine, allowing the latter to be dedicated to its mask-writing function. The E-beam procedure is particularly useful in executing the refined geometries needed in complex integrated circuits. The former industry procedure of using optical lithography meant dealing with the wavelength limitations of visible light. Now, with the E-beam machine, Master Images can take the information it has on tape, and turn the electron beam off or on where it is required to make the designated image, much like printing a photo. The beam pattern is based on a grid system of individual address units millionths of an inch long to identify the beam locations. This procedure precisely describes the exposure areas to the computer, resulting in much greater accuracy. It also has meant lower production costs, because more masks are produced correctly the first time.

The plates are chemically processed to produce the final mask, and passed through a rigorous quality assurance process for inspection and repairs if needed. Final masks are then shipped to the customer.

This master mask contains many copies of the same IC pattern, and the final wafer of silicon will contain the interconnection patterns of all these circuits. Materials are deposited on the silicon and etched away by chemical processes to produce the final circuit. The mask acts as a shield over the silicon to permit the introduction (called "doping") of the necessary impurities. These positive-type or negative-type impurities serve to rearrange the molecular structure of the silicon, thus creating conductivity and resistivity in the IC where needed.

Since E-beam production began at Master Images in July 1984, the company has offered customers a significant reduction in turnaround time for products. According to Norm, "The increased throughput resulting from the system will enable us to achieve increased customer acceptance and growth. We're also investigating the marketability of our system to other mask shops and integrated circuit manufacturers via Data General ISV (Independent Software Vendor) or OEM (Original Equipment Manufacturer) programs."

Activities

The final Data General outing of the season will be held at Edaville Railroad in Carver, MA. on Saturday, October 5.

Riverside Outing Tomorrow

Employees and guests attending Riverside Park in Agawam, Mass., are reminded of the following:

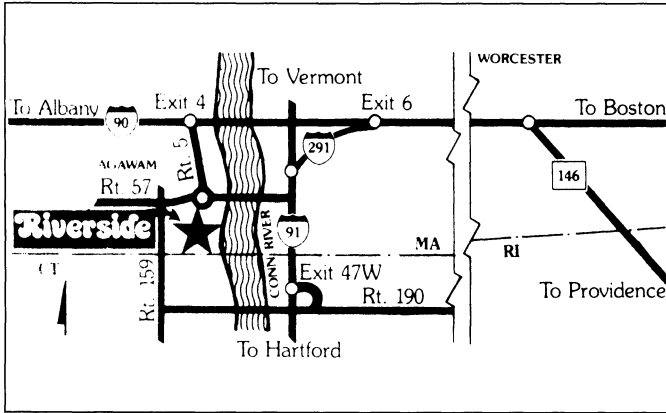
- BRING YOUR BADGE TO THE PARK
- In case of severe inclement weather, contact Data General-Westboro Security at 366-8911 to confirm whether or not the outing is being held.

• *Events and Facilities -*

- | | |
|-------------|---|
| 9:30 a.m. | Park opens. Data General has exclusive use of the park until 1:30 p.m. It is open to the public at 1:30 p.m. |
| 10 a.m. | Coffee and doughnuts in the International Dome area and Captain Rivi's. |
| 10 a.m. | All rides and entertainment begin. |
| 11 a.m. | Hot dog, hamburger and snack chits may be redeemed on the Midway. Those interested in the auto races may pick up passes in the picnic grove at 6 p.m. |
| 12 - 4 p.m. | Chicken barbecue served in the picnic grove. |
| 11 p.m. | Park closes. |

Directions To Riverside

Take Exit 6 off the Mass Pike. Take I-291 West 4.2 miles. Merge right for I-91 South. Go 2.8 miles to "Agawam" exit, around rotary to Rt. 57 West, then to Rt. 159 South (Main Street). Continue South 2.9 miles until you see a sign for the Riverside entrance.



Discount Tickets For Renaissance Faire

Discount tickets for the Seventh Annual King Richard's Renaissance Faire in Carver, Massachusetts are available through the Data General Activities Committee. The Faire features performances, music, dance, jousting matches, food and drink, crafts and much more all in the spirit of the Renaissance era.

Adult discount tickets may be purchase at \$5 each (regular price \$8.50). Children's tickets (ages 5 to 12) are \$3.50 each and may be purchased at the time of admission. Children under 5 years of age are admitted free. These discount tickets are valid on the following dates: September 7, 8, 14, 15, 21, and 28; and October 5, 12, and 19.

Adult discount tickets may be obtained by sending a check, payable to Data General Activities Committee and a stamped, self-addressed envelope to KING RICHARD'S FAIRE, Mail Stop 4-78 in Southboro.

Get In Shape With Aerobics

The Data General Fitness Club has organized two aerobics classes for this fall:

Dancin Aerobics will be held on Monday and Wednesday evenings at 5:30 p.m. in the main cafeteria in Westboro. Classes start Monday, September 16.

Free Style Aerobics will be held on Tuesdays and Thursdays at 5:30 p.m. also in the main cafeteria in Westboro. These classes start Tuesday, September 17. Registration is on a first come, first serve basis.

Basketball Season Gets Started

Employees interested in playing in the Data General Basketball League should submit their names to either Dave Horne at Mail Stop 3-16 in Southboro or Keith Millea at Mail Stop C-134 in Westboro, before September 20. There will be a meeting of all captains on Monday, September 23 in the Westboro main cafeteria at 5:15 p.m.. For more information, contact Dave Horne at 366-9355 or Keith Millea at extension 6171 in Westboro.

Ski Club Firms Up Schedule

The Data General Ski Club is in the final stages of planning the 1985/86 skiing schedule. Employees interested in joining the ski club and receiving ski trip announcements should send their name, phone extension, Mail Stop and work location to: Data General Ski Club, Mail Stop F211 in Westboro.

Join The Ski Team

It's time to wax your skis and prepare for another exciting season of racing with the Data General Ski Team. This year, the team will be racing at Wachusett Mountain on Wednesday evenings and at other New England ski areas.

Employees interested in joining the Data General Ski Team should attend an organizational meeting on Wednesday, September 18 at 5:15 p.m. in the Westboro cafeteria. If you are unable to attend, send your name and Mail Stop to: SKI TEAM, MS B233 in Westboro. (Priority will be given to those who show up for the meeting and then on a "as space permits" basis.)

MENU

Pizzeria, phone orders 10 a.m. - 2 p.m., call extension 4376.

Milford, Monday, Beef Burgundy; Tuesday, Taco's; Wednesday, Roast Turkey; Thursday, Stuffed Shells; Friday, Fried Clams.

Westboro, Monday, Chicken Chow Mein/Grilled Rueben; Tuesday, Egg Plant Parmesan/Steak & Cheese Sub; Wednesday, Macaroni & Cheese Please/Chicken Cutlet Sub; Thursday, Beef Liver & Onions/Croissant Sandwich; Friday, Baked Fish/Fish & Cheese Sandwich.

Hours

Westboro Cafeteria, full breakfast, 6:30 a.m. - 8:30 a.m.; lunch, 11:30 a.m. - 1:30 p.m.; open from 6:30 a.m. - 3:00 p.m. for beverages.

Pizzeria, serving from 10:00 a.m. - 2:00 p.m..

Milford, full breakfast, 6:30 a.m. - 8:30 a.m.; lunch, 11:15 a.m. - 1:15 p.m.; supper, 5:30 p.m. - 7:30 p.m.; open from 6:30 a.m. - 3:15 p.m. for beverages.

All-Star Action

Data General's Softball League recently held its 1985 All-Star games at the Knights Of Columbus Field in Ashland. Below is information and photos on that evening's winners:



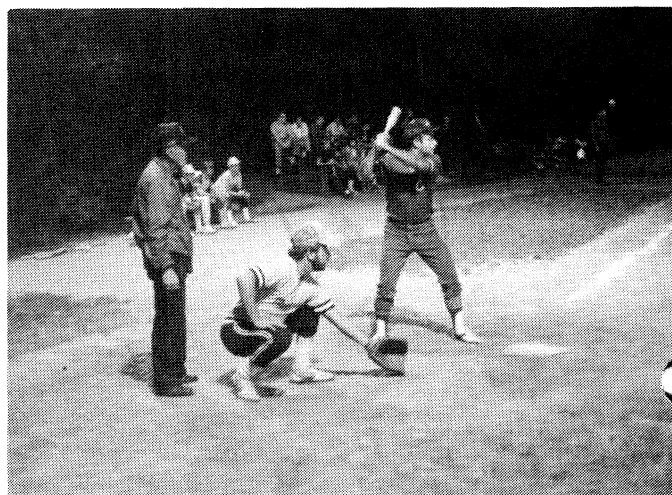
The league's National Invitational team, led by Paul Barker, squared off against reigning Industrial A Rhode Island State Champions from Data General-Milford, led by Troy Taylor. After seven complete innings, the score stood at 1-0 in favor of Data General-Milford. These two showcase teams demonstrated team play and spirit as they opened the 1985 All-Star games.



The Softball League Officers escaped with a 10-4 win over the Executive team. After five innings of play, the score remained 4-2 in favor of the Officers. Staunch defense by third baseman Sandy Bowen for the Officers provided the spark that kept the runners on the bases. Sandy was awarded Most Valuable Player of the game.



The American League East team, combining good pitching with solid defense, defeated the American League West by a score of 9-3.



National League East, in a thrilling night cap, defeated the West All-Stars 4-3. The winning run was scored by Tom "Pops" Wytiaz in the last half of the seventh inning on a single by Vince Fortin. Winner of the random raffle drawing for box seats to the Red Sox/Toronto Blue Jays game was Chris Lewis of Southboro.

Road Race Entry Deadline Is Today

Today is the last day to enter the Dasher Road Races scheduled for next Friday, September 20. Included will be a 10K foot race, a three-mile foot race, a 15.6-mile bike race and a biathlon. (Bike race participants are required to wear helmets.)

Cyclists will have numbers in the 001 through 199 series; biathlon participants will use numbers in the 201 through 299 series; the three-mile runners will wear numbers 301 through 499, and the ten kilometer (6.2 mile) runners will race with the 601 through 999 series.

Eric Engberg, Race Committee chairman, urges all participants to check the number assigned to them to see that it is in the proper series. "Different races start simultaneously," says Eric. "The assigned numbers are the only way we have of determining the results."

Employees interested in serving as marshalls should contact Eric Engberg at extension 3221 in Westboro. Also, there will be a meeting of Race Day volunteers at 4 p.m. on Thursday, September 19 in the Westboro main cafeteria. The race is sponsored by the Data General Activities Committee solely for its employees.

• Here Are The Race Routes

All races will begin at 5:15 p.m. from the rear of Building 14A in the east corner of the north parking lot.

10K and Three-mile Foot Races: Starting line in the rear north parking lot. Runners will head off behind Buildings 14A and 14B past the access road to 2400 Computer Drive, around and out the main driveway onto Computer Drive. From that point, the race route will remain the same as in the past until runners turn into the main driveway at Data General. ALL runners must enter the driveway, run straight back to the rear of Building 14A and finish where the race began.

15.6-mile Bike Race: Bikers will start at the same time and same place as the runners except bikers will proceed directly out of the driveway past Building 14A onto Computer Drive. From there, the route is as follows: left across Route 9, right onto Flanders Road, right onto Route 30 straight to intersection of Route 30 and Route 85 into Southboro, right turn onto Route 85, right onto Flanders Road, right onto Route 46S to Computer Drive, to the main entrance of Data General, straight down driveway, past Building 14A, finishing where the race began.

Biathlon: Combine the 15.6-mile bike race with the three-mile foot race.

Note: At 5:05 p.m., all outgoing traffic will be diverted through the 2400 Computer Drive-access road. At the start of the races (5:15 p.m.), all vehicles will be asked to stop until the racers have passed. Employees should exercise caution when passing bikers or runners on the roads.

Dasher Record Holders

Listed below are the current course record holders for the Dasher Road Races.

Overall 10K	Charles Galligan	34:02
Women 10K	Betsy Anderson	40:40
Master 10K	Lloyd Slocum	34:25
Women Master 10K	Lila Naimark	46:30
Overall 3M	Greg Yannekis	16:03
Women 3M	Jane Braley	19:04
Master 3M	Hiroyoshi Kinoshita	18:26
Women Master 3M	Anne Kennedy	23:39
Overall Bike	Christopher Dehahn	36:34
Women Bike	Lisa Weidner	44:30
Master Bike	Donald Baum Jr.	40:38
Overall Biathlon	Camilo Davis	61:37
Women Biathlon	Karen Moussette	84:34

**Road Race
Entry Form**

(Please Print)

Name: _____

Extension: _____

MS: _____ Badge #: _____

Race Categories:

Check

- under 35
- 35 and over
- Male Female
- Bike Race
- 3-Mile Foot Race
- 6.2-Mile foot Race
- Biathlon
- Race Day Volunteer

T-Shirt Size:

Circle One:

S M L XL

I represent that I am in good physical condition and sufficiently trained to participate in the Dasher Road/Bike Race. I am aware of the risks which are inherent to this activity, and I am participating at my own risk. In consideration of Data General Corporation and the Data General Runners Club accepting this application, I hereby assume any and all risks which may be associated with this activity and hereby waive and release all causes of actions and claims for damages of any nature whatsoever which I may have against Data General Corporation, its employees, directors, officers and agents arising out of or connected with my participation in the activity.

Signature: _____

Date: _____

Return the race form to DASHER RACE, MS E111 in Westboro no later than one week prior to the race date. This race is sponsored by the Activities Committee solely for Data General employees. Incomplete forms will be rejected.

MARKETPLACE

CARPOOL

Riders, looking to join/form carpool from Worcester to Webo, 8:30-5, Richard '9715.

arpool, passengers looking to join/form carpool, Woonsocket/Blackstone to Webo, 8:30-5 Lucille x4790.

Existing Carpool, needs riders, Brookline/Brighton area to Webo/Sobo, flex, User x7093.

LOST & FOUND

Shaving Kit, men's, brown, found in shower/locker room 3 wks ago, call Security X6100.

FOR RENT

Apt, Milford, 1 bdrm, AC, pool, tennis, 2nd fl, 1 yr lease, \$550/mo, 478-4050 (Milford).

Condo, season membership, Killington, 1 mi to lifts, walk to restaurants, 655-1368 (Natick).

Garage, to store cars, boats, tent trailers, furniture, \$30/mo, 234-3103 (Whitinsville).

Apt, 1 bdrm, \$350 + util, 966-0623 (Bellingham).

WANTED

Roommate, to look for/share apt in the Boston/Brookline/Brighton area, 872-0076 (Framingham).

Washer/Dryer, 478-6760 (Milford).

Roommate, to share 2 bdrm apt, avail 11/1, pool, tennis, sauna, 4 mi to DG, \$365 all util incl, 393-2475 (Northboro).

Roommate, to share 3 bdrm home, pool, min to Webo, \$285/mo + util, 568-0370 (Hudson).

Roommate, to share 4 bdrm house, 2 1/2 baths, Upton/Westboro line, \$450/mo + util, 529-3434 (Upton).

Roommate, to share 4 bdrm house, 10 min to Milford, 20 to Webo, \$230/mo util incl, 528-3948/376-2110 (Franklin/Millis).

Babysitter, full-time, Mon-Fri, 6:45-3:45, for 2 boys ages 5 mos & 19 mos, your home in the Southboro/Westboro area, call for interview, 481-8743 (Marlboro).

Babysitting/Housekeeping, job, afternoons, 2:30-6, flex, in Milford H.S. or No. Purchase St. area, 473-2388 (Milford).

FOR SALE

Baby Items, crib; play pen, 40 in; walker; swing; infant seat, 892-4305 (Leicester).

Items, Garard stereo turntable w/new needle & dust cover, \$45; 10 band equalizer, \$45; 6 string Aria guitar, \$45; auto FM converter, \$10; auto CB receiver, \$10; super 8mm zoom movie camera, \$30; super 8 & reg 8mm special effects projector, \$50; 8mm viewer, splicer, \$30; 15 in Ford factory spoke hubcaps, 2 for \$50; 15 in deep dish chrome rings & hub set, \$35; 755-1860 days/756-7626 nights (Worcester).

Text Book, to buy/borrow, "Introduction Electronics And Instrumentation" by McWane, 870-9363 (Westboro).

Items, old Ivory Soap desk recently refinished, \$70; gold velvet swivel rocker, \$20, 481-4140 (Marlboro).

Hanging Kitchen Light, colonial wagonwheel, 5 lights, light amber glass globes, natural wood wheel w/brass fittings, \$100, 473-2388 (Milford).

Dryer, Whirlpool Supreme gas dryer, almond, \$200, 481-1710 (Marlboro).

Trailer, '84 Coachmen, 29 ft, self-contained, slps 6, awning, jacks & accessories, used 6 times, \$13,000/BO, 366-0821 (Westboro).

Tent Trailer, '70 Skamper pop-up, 16 1/2 ft, slps 8, stove, icebox, sink, rewired last year, \$700, 987-8972 (Oxford).

Boat, Sloop, 23 ft, slps 5, 4 sails, new Johnson 8hp, VHF radiophone, coast guard package, incl trailor, much more, \$5995, 435-6780 (Hopkinton).

Skis, 195cm Olin Mark VI, Tyrolia 380D bindings, BO, 655-1368 (Natick).

Items, electric range & dishwasher, 7 yrs old, Sears, burners need work, \$65/ea/BO; Smith Corona electric typewriter, 7 yrs old, \$125; Pioneer underdash stereo/cassette, w/6x9 Jensen coaxial spkrs, \$85/BO, 234-6807 (Northbridge).

Bed Set, twin size, metal frame, \$150/BO, 865-6906 (Millbury).

Paint, 6 gal Olympic semi trans stain, #717 Red Wood Naturaltone \$50; 1 gal Olympic solid stain, Russet, \$8, 529-3434 (Upton).

Tent Trailer, '74 Apache, slps 8, stove, heater, awning, sink, ice box, storage, \$1200, 881-2246 (Ashland).

Portable Organ, Farfisa matador w/cover, stand, various bells & whistles, etc, \$300, 842-4333 (Shrewsbury).

Stereo Equipment, Teac 3340S 4-track w/remote and model-2 6 channel mixer, \$650; Pignose 30/60 studio amp, \$150, 596-3616 (Wilbraham).

'81 Kawasaki Jet Ski, w/trailer, new battery, \$1600, 879-4030 (Framingham).

Items, Thomasville American Country solid oak dining room w/6 chairs, server, display china & buffet china, \$4500; king size bed w/3 pier cabinets and light bridge, \$2500, 529-3434 (Upton).

'84 Starcraft Popup, 24 in, w/refrigerator, heater, stove, king sz bed, 428-1330 (Osterville).

Home Gym Equipment, DP Gympac 1000 fitness system, all accessories, \$300; DP Bodytone 300 rowing machine, new, \$100, 492-8159 (Cambridge).

Items, bar w/2 stools, \$15; pool table, \$25; gas dryer, \$50; maple kitchen table, \$25; 10 in table saw w/blade, \$60, 429-7075 (Holliston).

Tires, 2 Dunlop Max Track snowtires mounted on rims sz 687-15; 2 Firestone Towne & Country snowtires mounted on rims sz BR78013; 1 inflatable sm sz spare, BO, 792-9063 (Worcester).

Windows, alum combination storm windows, all w/screens, BO, 792-9063 (Worcester).

Waterbed, super king sz, bookcase headboard, 12-drawer pedestal, motionless, 568-1842 (Hudson).

AUTOS

'74 Ford LTD, 4 dr, high mi, needs exhaust system, \$650, 842-2026 (Shrewsbury).

'76 Grand Prix, \$1100, 473-7691 (Milford).

'77 Mustang II Ghia, for parts, V6 engine, high mi, auto, AC, AM/FM, etc, \$500/BO, 476-7377 (E. Douglas).

'77 Chevy Impala, auto, AM/FM, 4 dr, misty green, burns no oil, \$1795/BO, 435-6780 (Hopkinton).

'78 AMC Jeep CJ-7, 8 cyl, PS/PB, recent work, 3 spd, needs gas tank, \$2500, 562-9401 (Hudson).

'78 Ford Fairmont, 2 dr, PS/PB, AC, 61K mi, \$1500/BO, 393-2490 (Northboro).

'79 Horizon, 4 spd, 32 mpg, 4 dr hatch, AM/FM, rustproofed, \$1395/BO, 435-6780 (Hopkinton).

'79 Toyota Corolla, lift back, 72K mi, auto, AM/FM, maroon, \$1800, 926-3560 (Watertown).

'80 Datsun 200-SX, 5 spd, AM/FM/cassette, hatch, red, \$3000/BO, 366-9430 (Westboro).

'80 Toyota Corolla, AC, PS/PB, 5 spd, AM/FM/cassette, \$3500/BO, 393-8272 ask for Karen (Northboro).

'80 Mazda GLC, 2 dr hatch, 67K mi, 5 spd, new tires, battery, shocks, AM/FM/cassette, \$3100/BO, 877-9903 (Framingham).

'80 Thunderbird, V8 302 engine, AC, PS/PB/PW/PL, tilt wheel, AM/FM/6 spkrs w/power booster, 61K mi, \$4300, 478-2668/480-7573 (Milford/Southboro).

'81 Pontiac Phoenix LJ, 4 cyl, loaded, 47K mi, \$3695, 943-2956 (Webster).

'81 Mazda Pickup, w/cap, 50K mi, BO, 865-9026 (Millbury).

'81 Volvo, fully equipped, low mi, \$10,500, 528-6750 (Franklin).

'82 Mercury Marquis, AC, AM/FM, 4 dr, cruise, 45K mi, \$5950, 791-8653/928-4457 (Worcester/Hubbardston).

'82 Honda Silverwing GL500, 800 mi, 1 Bell full face helmet, Kryptonite lock, still under warrantee, \$1800, call Todd, 267-1153 (Boston).

'83 Suzuki GR650 Tempter, 1300 mi, under warranty, BO, 485-6508 (Marlboro).

'83 Camaro, light brown, cloth interior, AM/FM/cassette, \$5900, 765-5134 (Woonsocket).

'84 Toyota Supra, 27K mi, orig owner, all options, \$13,500, 785-1490 (Dover).

'84 Mazda 626LX, 5 spd, AC, AM/FM/cassette, cruise, chapman, \$9500/BO, 822-2337 (Taunton).

'85 Datsun 300ZX, 5K mi, 5 spd, t-roof, AC, AM/FM/cassette, security system, 653-6510 (Natick).

FIRST QUARTER								
	SUN	MON	TUE	WED	THU	FRI	SAT	WK
PERIOD 1	OCTOBER							
	29	30	1	2	3	4	5	1
	6	7	8	9	10	11	12	2
	13	14	15	16	17	18	19	3
	20	21	22	23	24	25	26	4
PERIOD 2	27	28	29	30	31			
	NOVEMBER							
					1	2		5
	3	4	5	6	7	8	9	6
	10	11	12	13	14	15	16	7
	17	18	19	20	21	22	23	8
PERIOD 3	24	25	26	27	28	29	30	9
	DECEMBER							
	1	2	3	4	5	6	7	10
	8	9	10	11	12	13	14	11
	15	16	17	18	19	20	21	12
	22	23	24	25	26	27	28	13

THIRD QUARTER								
	SUN	MON	TUE	WED	THU	FRI	SAT	WK
PERIOD 7	APRIL							
	30	31	1	2	3	4	5	27
	6	7	8	9	10	11	12	28
	13	14	15	16	17	18	19	29
	20	21	22	23	24	25	26	30
PERIOD 8	27	28	29	30				
	MAY							
					1	2	3	31
	4	5	6	7	8	9	10	32
	11	12	13	14	15	16	17	33
	18	19	20	21	22	23	24	34
PERIOD 9	25	26	27	28	29	30	31	35
	JUNE							
	1	2	3	4	5	6	7	36
	8	9	10	11	12	13	14	37
	15	16	17	18	19	20	21	38
	22	23	24	25	26	27	28	39

SECOND QUARTER								
	SUN	MON	TUE	WED	THU	FRI	SAT	WK
PERIOD 4	JANUARY							
	29	30	31	1	2	3	4	14
	5	6	7	8	9	10	11	15
	12	13	14	15	16	17	18	16
	19	20	21	22	23	24	25	17
PERIOD 5	26	27	28	29	30	31		
	FEBRUARY							
						1		18
	2	3	4	5	6	7	8	19
	9	10	11	12	13	14	15	20
	16	17	18	19	20	21	22	21
PERIOD 6	23	24	25	26	27	28	1	22
	MARCH							
	2	3	4	5	6	7	8	23
	9	10	11	12	13	14	15	24
	16	17	18	19	20	21	22	25
	23	24	25	26	27	28	29	26

FOURTH QUARTER								
	SUN	MON	TUE	WED	THU	FRI	SAT	WK
PERIOD 10	JULY							
	29	30	1	2	3	4	5	40
	6	7	8	9	10	11	12	41
	13	14	15	16	17	18	19	42
	20	21	22	23	24	25	26	43
PERIOD 11	27	28	29	30	31			
	AUGUST							
						1	2	44
	3	4	5	6	7	8	9	45
	10	11	12	13	14	15	16	46
	17	18	19	20	21	22	23	47
PERIOD 12	24	25	26	27	28	29	30	48
	SEPTEMBER							
	31	1	2	3	4	5	6	49
	7	8	9	10	11	12	13	50
	14	15	16	17	18	19	20	51
	21	22	23	24	25	26	27	52