

Mini News

News For The Employees of Data General

November 30, 1984

Vice President Of Federal Systems Division Named



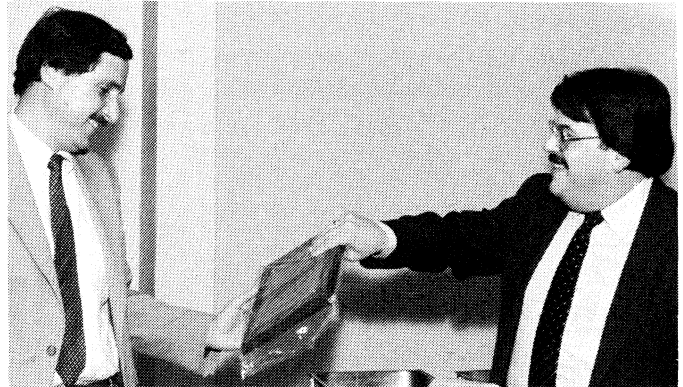
Larry Holswade

Larry Holswade joins Data General as vice president and general manager of the recently-formed Federal Systems Division, reporting to Bob Miller, senior vice president of the Business Divisions. He is responsible for product planning, marketing, sales support and coordination for the Federal market.

Larry spent the past two years at Dataproducts Corporation in Woodland Hills, California, where he was group vice president of government and military products. He also was vice president of marketing for a year at Plantronics where he was in charge of product management and development, and 15 years at Control Data Corporation. At Control Data Larry was vice president of the Western region and also held sales and marketing positions relating to federal government agencies, the armed services and prime government contractors.

He holds a bachelor's degree in industrial management from West Virginia Institute of Technology.

\$10 Million In Refurbished, Surplus Equipment Shipped



Paul Faria (right) CPD Marketing manager, presents CPD Manager Howard Berg a plaque commemorating the \$10 million shipment of refurbished equipment at a recent luncheon.

"The Southboro Renaissance refurbishment organization and Continuing Products Division (CPD) at Westboro have been critical contributors to the overall corporate objective of profitability by refurbishing and selling equipment that otherwise would be scrapped," says Michael Schneider, Customer Service vice president.

Michael was addressing CPD and Renaissance employees who were celebrating, at a recent luncheon, the shipment of more than \$10 million in refurbished equipment.

"We have gone from an idea to a reality; we have shipped more than \$10 million in systems and peripherals, surpassing earlier projections," said CPD Manager Howard Berg. "Data General products have gone to more than 425 customers and the coming year promises to be even greater. Our product lines and customer base will be expanding in FY'85," he added.

"In our first full year of operation we have established the business as a viable entity for Data General," Phil Mecagni, Renaissance Operations manager remarked. "At the beginning of the year there were reservations about the program, but reaching the \$10 million goal proves that it works," Phil added.

Coming....

Data General Day at
The Computer Museum in Boston
Watch For Details.

Systems are obtained through a variety of sources, including Field Engineering and Sales offices as well as internally-used equipment. The systems are assessed for product marketability on a case-by-case basis. All must be inspected for general condition, and Engineering Change Order (ECO) requirements must be determined. Existing test procedures and workmanship standards are adapted to develop specific guidelines.

The 35 Renaissance employees, which include engineers, test technicians, assemblers, quality inspectors and materials support people; and all employees within CPD received a certificate "with sincere appreciation for a hands-on contribution to the CPD/RSO Miracle".



Phil Mecagni, (left) manager of Renaissance operations at Southboro, gives a certificate of achievement to Senior Manufacturing Engineer Gary Arthur (right) as CPD Manager Howard Berg looks on.

Conference Shows That SPC Is Working

Representatives of Data General's six domestic Manufacturing facilities met with Westboro employees involved in Statistical Process Control (SPC) early this month to discuss strategy, implementation techniques and cost of quality.

Dick Rahaim, a Quality Engineering specialist with Corporate Quality Assurance at Westboro, kicked off the second SPC Conference at Data General-Woodstock, urging the continuance of the team effort which is contributing to the success of the program. Dick is coordinating the SPC program within Data General.

The importance of effectively using statistical tools to actualize improved productivity and increased customer satisfaction was emphasized by the guest speaker, Westbrook Plant Manager Carroll Halva. He stressed the "critical need for corporate-wide participation".

Participants shared the benefits derived from the implementation of SPC (methods that can be used

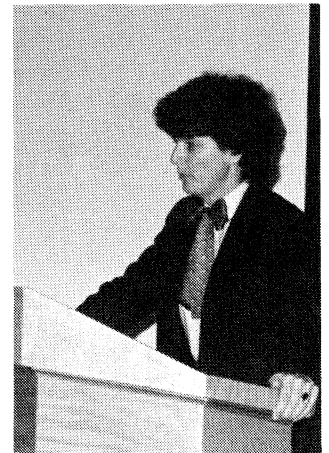
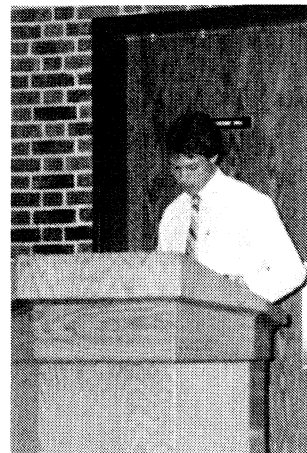
to monitor any repetitive process). "The application examples presented at the conference proved that even simple statistical tools provide sound decision-making capabilities," stated Mark Kane of Corporate Quality Assurance at Westboro.

A program of "Quality Pursuit", presented by Brian Stetson and Doreen Gonsalves, SPC coordinators for Corporate Sales Administration at Westboro, described the Sales Administration process and identified the types of problems that inhibit their quality output. Brian and Doreen are involved in an aggressive program of applying statistics to control an administrative environment.

"The successful implementation of SPC is an important step toward Data General continuing to make the best quality products on the market," said Charlie Waite, manager of Manufacturing and Field Support Quality Assurance at Westboro. "The apparent success demonstrated at this conference indicates that much progress is being made with this important strategy," he said.



Dick Rahaim of Manufacturing Quality Assurance at Westboro gave the kick-off speech at the Second SPC Conference held November 1 and 2 at Data General-Woodstock.



Brian Stetson and Doreen Gonsalves of Corporate Sales Administration at Westboro present "Quality Pursuit".

New Portable Computer Featured at ISA '84 Show



More than 35,000 people attended the annual Instrument Society of America show held late last month in Houston, Texas. Featured at Data General's booth was the DATA GENERAL/One Personal System, among other industrial instrumentation products.

In keeping with the theme, "Moving Industry Ahead in Process Automation," Data General demonstrated a wide range of computer products for the industrial instrumentation and process control marketplace at the annual Instrument Society of American show held October 22 in Houston, Texas.

The DATA GENERAL/One personal system was featured, along with equipment from Computer Products, Inc. of Pompano Beach, Florida. Data General and Computer Products, Inc. have signed an agreement to work together marketing measurement, control and test systems that will combine Data General computers and Computer Products, Inc. software and data collection equipment.

Running on the DATA GENERAL/One was REAL-TIME LAB NOTEBOOK software, which automates repetitious research tasks while providing data acquisition, analysis modeling, and graphics capabilities. The package integrates the power of the personal computer with the functionality of Lotus 1-2-3 and Symphony software.

Also demonstrated were a series of software packages for the process control marketplace on Data General's 32-bit DS/4200 color graphics engineering workstation, the ECLIPSE MV/10000 superminicomputer, the DESKTOP GENERATION Model 20 microcomputer, and the DASHER industrial terminal.

Ring, Ring

To provide improved telephone service for Data General plant offices throughout the United States, a new telephone switching system is being installed at Corporate Telecommunications in Westboro.

When the system is put into service December 17, it will result in improved long distance calling and provide facilities outside of Westboro with an automatic recall feature. The next issue of *Mini News* will include any new dialing procedures which employees should follow when using the system.

Data General Instructs The Teachers



Program Coordinator Dianna Carter assists secondary school teacher Bill Ward in the use of CEO Comprehensive Electronic Office.

Area teachers aren't receiving apples from Data General. Instead, they are being given a useful Computer Literacy Training course utilizing desktop computers.

"Teachers from surrounding communities, including Southboro and Westboro, are being given the opportunity to participate," states Diana Carter, corporate Office Staffing manager and coordinator of the program. "There is a growing awareness among many high-technology firms, including Data General, that secondary school educators are in great need of computer training. It is for this reason that Data General decided to implement a program designed to emphasize the power of computers and how they are used."

This necessity became apparent through Southboro Plant Manager Bill Kelleher's membership on the South Middlesex Chamber of Commerce Board of Directors and his involvement with the Regional Expanding Vocational Assistance Program (REVAP). Also, as a member of the Massachusetts High Tech Council, Data General has a standing commitment to provide industry support to education.

"The training program demonstrates Data General's belief in the importance of assisting educational institutions," states Bill. "Through the program, local area teachers can become computer literate and better able to make intelligent decisions about how to implement computer training in the secondary school classroom."

Instructors for the program are Data General employees Carla Ranney, Charlotte Stanley, Joan Devellis, Beth Perkins and John Duncan of Southboro's MIS User Services department.

Data General software and DESKTOP GENERATION 10/SP computers are used in teaching about computer capabilities. Word processing and electronic mail capabilities are learned through the CEO Comprehensive Electronic Office system; spreadsheet usage is shown with Compucalc; and BASIC programming instruction is taught through CAI (Computer-Aided Instruction) Basic Tutorial.

"Most of us have little or no previous computer training. This program makes us aware of what is available," states Bill Ward, a teacher at Assabet Valley Vocational School.

Austin Welcomes PRIDE Facilitators



PRIDE Circle facilitators from Data General facilities nationwide attended the recent three-day meeting at Austin. They are (standing, left to right): Gloria Carter, Apex; John Thompson, Westboro; Wanda Reetz, Austin; Kay Bates, Apex; Anita Cedarhom, Westboro; Linda Skinner, Westboro; Dick Zielinski, Southboro; Alan Johnson, Portsmouth; Claudia Lloyd, Westboro; Karen Crandell, Southboro; Teresa Toole, Clayton; Harriet Harvey, Sunnysvale; (seated) Pam Karaffa, Portsmouth; Glenn Dotter, Westbrook; Ken Perreault, Milford and Debbie Hixson, Westboro.

PRIDE Circle facilitators from Data General facilities across the country recently congregated at Austin for a three-day business session.

While at Austin, the group received two tours of the facility. Wayne Machon, acting plant manager, conducted the tour of the Manufacturing plant and Angie Martinez, senior software engineer, directed them through the R&D Engineering Lab. The facilitators were impressed by the size and scope of Austin.

During their stay, the facilitators devised plans for the PRIDE Circle Conference scheduled to be held in May of next year. They left Austin both enthused and excited after having learned more about the plant's operations.

Much was accomplished at the PRIDE Circle Facilitator's meeting as plans get underway for a productive 1985.

When It Storms....

How To Park The Morning After

The winter season is upon us and stormy days are ahead. To expedite the plowing of parking areas, policies have been established by Facilities and Security and Westboro employees are asked to cooperate. A diagram of the parking area at Data General-Westboro appears on the next page for reference.

When arriving the morning after a storm and plowing is in effect, go to the Lower North Lot #1. This will be the first area to be cleared. Give sanders and plows the right of way at all times.

When parking space lines are covered with snow, Security will help in lining up cars. If a Security guard is not available to assist in lining up vehicles, use common sense and try to stay within an established row.

If there are no available spaces in any lot, parking will be permitted **THAT DAY ONLY** on the east side of the East Road. As more spaces are made available, you may be asked to move. All employees should have their cars registered with Security as strict parking regulations will be adhered to and towing is in effect- snow or no snow.

If it is imperative that you must leave a vehicle overnight, you must park in the new visitors' lot in the front of Building 14A, but not in the circle area. Security must be notified in advance. Vehicles left in any parking lot more than two days will be towed.

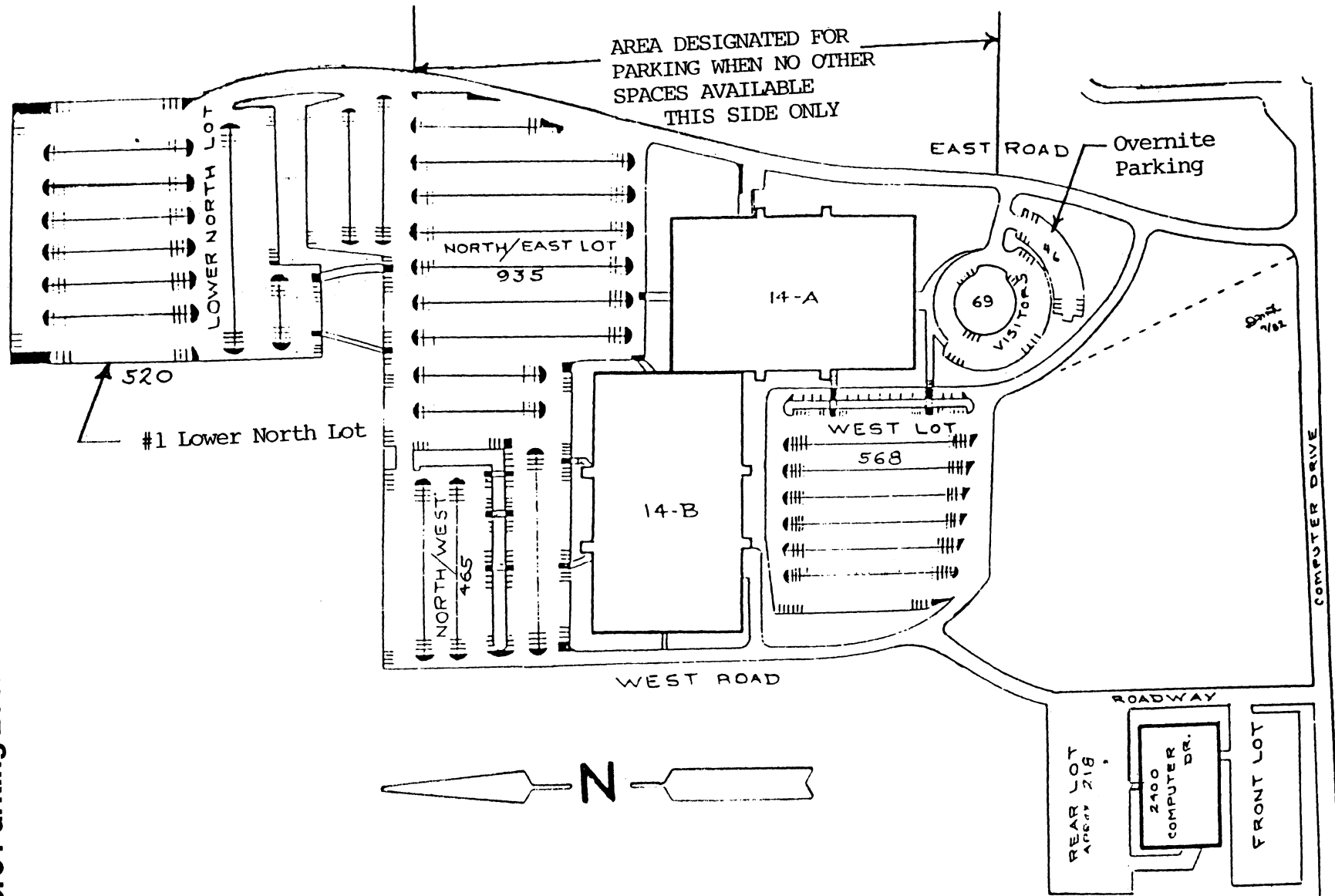
Work Cancellations Will Be Broadcast

The winter storm season is upon us. In case of severe weather conditions, tune to one of the local radio stations below and listen for work cancellations.

- WBZ** (1030) - Boston
- WTTS** (1060) - Natick
- WSRO** (1470) - Marlboro
- WKOX** (1190) - Framingham
- WORC** (1310) - Worcester
- WMRC** (1490) - Milford
- WJFB/FM** (97.3) - New Bedford
(Portuguese Language)
- WSRS/FM** (96) - Worcester

If a decision is reached to shutdown daytime operations, the radio stations will be notified by 5: a.m. and the information will be broadcast immediately. The station will specify which facilities are involved and what shifts are affected.

Westboro Parking Lots



Westboro

People

Don Tocher speaks To BU Engineering Honor Society

Don Tocher, director of Advanced Systems, was keynote speaker at the annual induction banquet of The Tau Beta Pi Association, the National Engineering Honor Society at Boston University.

He gave an overview of Data General's Advanced Systems products including communications and the UNIX operating systems.

Don joined Data General in 1981 as director of Systems Architecture. In his present position, Don heads an organization of more than 230 employees in Westboro and Research Triangle Park, North Carolina.

Don is an active participant at various Manpower Development functions, including Data General Orientation programs for college new hires.

In ISD...

Jeffrey Gill joins the System Supplier Program (SSP) as senior Major Accounts Marketing specialist, reporting to Jim Willett, manager of Major Opportunities.

Jeff interfaces with the worldwide Sales force to develop business through the Authorized System Distributor program. He also assists in coordinating Guest Marketing visits and annual executive briefings for System Suppliers and Authorized System Distributors. Before Data General, Jeff was with Wang Laboratories in product marketing and research and development.

He holds a BA in mathematics/computer science from Canisius College in Buffalo, New York.

In Public Affairs...

Communications Specialist **Greg Jarboe** joins Public Affairs as a speechwriter, reporting to Ray Thomas, Corporate Communications manager.

Greg brings to Data General several years of experience in the computer industry. Most recently he was director of Marketing Communications for Sequoia Systems of Marlboro. Prior to that he was manager of Public Relations for Stratus Computer in Natick and also was a speechwriter and product publicity specialist for Wang Laboratories.

Greg also has served as a legislative aide to Massachusetts State Senator Sharon Pollard; editor of The Concord Journal and The Action Minute-man; news editor of The Beverly Times, and reporter for WCCM Radio in Lawrence.

He holds a BA from the University of Michigan.

In Human Resources...

Human Resources welcomes **Hal Lord** as manager of Staffing for the Business Division, Corporate Technology, Home Office Operations, reporting to Human Resources Director Tim Morrison.

Hal joins Data General from Simplex where he held positions as manager, Professional Employment and Regional Human Resources manager. Before that he was on the faculty within the Massachusetts State College system and at the State University of New York.

Hal holds a master's degree in education from Northeastern University and a bachelor's degree from Framingham State College.

In SDD..

Technical Writer **Elizabeth Morey** has joined Software Documentation, reporting to Section Manager Marguerite Krupp.

A recent graduate, Elizabeth earned a BA at Wellesley College.

Software Engineers **Jon Lynn** and **Drew Wolff** have joined Corporate Systems Support (CSS).

Jon, who reports to Section Manager Bob Barton, comes to Data General from Creative Computer Systems Corporation where he was executive vice president.

He holds a BS in computer engineering from Boston University.

Drew reports to Project Leader Bob Paysnick. Prior to joining Data General Drew was a laboratory coordinator in the micro-computer lab at the University of Pennsylvania.

He holds a BS in computer science from the University of Pennsylvania and a BS in management from the Wharton Business College.

Jan-Willem Neurdenburg has been promoted to section manager, responsible for Language Products within CSS. He reports to Manager Bob Lebel.

With Data General for six years, Jan started as a systems engineer for Data General-Netherlands and most recently was a software engineer within CSS. Prior to Data General he was a systems analyst/programmer at Stichting ZISAM in The Netherlands.

Jan holds degrees in civil engineering and mathematics from the Delft Technical University in The Netherlands.

Reporting to Jan is **Teri Carilli**, a software engineer, supporting Advanced Operating Systems/Virtual Storage (AOS/VS) and AOS/VS Basic.

Teri is a recent graduate of Brown University.

Roland Alden and **Helene Plotka** have joined Language Systems as software engineers, responsible for software development.

Reporting to Senior Section Manager Anne Halford, Roland was a project leader with Forethought, Inc. in California before joining Data General.

Roland holds a BA from California College.

Helene, a recent graduate of Cornell University, reports to Arvind Goyal. While at Cornell Helene was a computer consultant in the science department.

In Purchasing...

Lisa Reagan joins Corporate Purchasing as an associate buyer, assigned to digital logic circuits. She reports to Bob Shroyer, manager of Corporate Semiconductor Purchasing.

Lisa recently received a BA from Providence College.

In Manufacturing...

Ron Allard has joined Advanced Manufacturing Engineering as Product Cost section manager, reporting to Harry Molloy, manager of Product Cost/Industrial Engineering. Ron interfaces with Data General facilities on new product costs and provides cost analysis.

Before joining Data General he was with Millipore Corporation for seven years.

Ron holds a BS in industrial engineering from Northeastern University and is enrolled in a master's degree program at Northeastern.

Reporting to Ron is **Diana Williams**, an associate Product Cost analyst, who reviews cost estimates from Manufacturing facilities.

A recent graduate of West Liberty State College in Wheeling, West Virginia, Diana holds a BS in business administration.

International Trade Operations welcomes **Jeanne Simington**, an associate international trade administrator, reporting to Manager Annamarie Taylor. Jeanne handles export licensing and international distribution operations.

Jeanne was with Jet Spray International Corporation in Norwood before joining Data General. Before that she was with Digital in Waltham and Medico International, Inc. of Woburn.

Jeanne earned a BA at Salem State College and a certificate of study from the University of Caen in Normandy, France.

Doreen Shedd and **Suzanna Garfunkel** are associate programmer/analysts in Marketing and Sales Information Systems, reporting to Project Manager Mike DiTullio. They design, build, test and document application programs.

Doreen recently graduated from Central New England College with a BS in computer science/information management systems. While a student in 1983, Doreen was a co-op student at Data General within Engineering Tools.

Suzanna is a college hire, having earned a BS in information science from Hartwick College in Oneonta, New York.

In Educational Services...

Jann Levesque is promoted to Software branch manager, reporting to Jim Montagnino, Eastern Regional Education manager. She is responsible for the operation and profitability of software training at the Education Center, 2400 Computer Drive.

With Data General for four years, Jann was most recently a Software section manager and before that an instructor at the Education Center.

Jann holds a BS in computer science from Framingham State College.

Malcolm Lawson is promoted to manager of Seminar Programs, responsible for developing and preparing seminars offered by Educational Services. He reports to Director Richard Jaross.

Joining Data General six years ago, Malcolm most recently was a Systems training specialist. Before Data General he was an electrical engineer for NEI in Hepburn, England.

Malcolm earned a BS in electrical engineering from Sunderland Polytechnic Institute in Sunderland, England.

Educational Services welcomes Hardware Instructor **David Jamieson**, reporting to Bob Pittman, Hardware Training manager for North American Education Centers. Dave conducts hardware training for the DATA GENERAL/One personal computer as well as courses in Data General computer architecture.

Prior to joining Data General he was a hardware instructor for the U.S. Navy.

Blood Donors Eligible For Clock Radio

As an added incentive to encourage employees to participate in the upcoming Red Cross Blood Drive, an AM-FM electronic clock radio will be given away. The winning donor will be announced in the December 14 *Mini News*.

The bloodmobile will be stationed here Monday, December 3 and Tuesday, December 4 at the northeast corner of Building 14B. Nurse Nancy Powers urges all employees to answer the call for blood.

Milford

Just Dial HELP...

If an accident occurs, you smell smoke, or any other similar emergency arises call HELP, extension 4357 at Milford. This direct line to the Safety guards has been set up for emergencies only.

People

In FE MIS...

Field Engineering Management Information Systems (MIS) welcomes **Chen-How Lee**, manager of Application Performances and Quality Assurance, reporting to MIS Director Jagdish Dalal. Chen handles technical consulting, acceptance testing, application implementation and performance.

Chen joined Data General in June 1980 as a senior systems programmer. He was most recently manager of Technical Support Services for Manufacturing Marketing and Sales Information Systems at Westboro.

He earned an MS in computer science and an MS in statistics, both from the University of Pittsburgh, and a BA in mathematics from National Taiwan University.

FE Employees Of The Quarter Honored

The first annual banquet to honor all FY '84 winners of the Field Engineering Employee of the Quarter awards was held at the Boston Parker House November 9.

The more than 275 attendees were welcomed by Tony Nicoletti, vice president of Field Engineering Support Services. Following the opening remarks at the reception, a banquet and dancing followed.

Among the employees cited for outstanding contributions were the following Employees of the Quarter for Quarter 4:

| | |
|-----------------|-------------------|
| Paul Ackerman | Holly Barlow |
| Alan Caron | Jose Chaves |
| Mark Cerny | Michael Colantoni |
| Tim Curran | Mike Glover |
| Wayne Glynn | David Hammond |
| Richard Haynes | Hoang Thi Tran |
| Philip Jandrow | Harry King |
| Andrew Kubicki | Linda Lancaster |
| Tom McLuckie | Fred Malpass |
| Rita Manganelli | Elaine Martel |
| Don Mirabito | Ronald Morrison |
| Ken Pendleton | Janine Serwin |
| Edward Sorila | Joan Thurber |
| Linda Tuite | Gail Waddon |
| Bing Yiu | |

Scrap Wood Available

Looking for kindling for your wood burning stove? Throughout the year, scrap pallets are piled up in the Receiving area at Data General-Milford. Employees interested in taking them home to burn may contact superintendent of Receiving Rich Petris at extension 2393 in Milford.

American Express Credit Card Program Meeting

Anyone eligible for the American Express Corporate Credit Card program at Data General is invited to a meeting today at 3 p.m. in the first floor conference room at Milford.

Employees who travel six times a year and/or incur \$2500 in business-related expenses are eligible.

Milestones

Congratulations to the following employees celebrating five, 10 and 15 years of service in November:

Westboro

15 Years

Parker Sutherland

Ten Years

Herb Osher

Arnold Vorce

Cliff Stark

Five Years

Bob Phelps

Betty Burgess

Karen Courtney

Donald Rudge

Elizabeth Winslow

Jeffrey Gardner

Kathy O'Day

Laurie Klobedanz

Dean Bassett

Lisa Vacaro

Renee Guillaume

Linda Sandstrom

Bruce Zarenko

Milford

15 Years

James Reiffarth

Five Years

Thomas Ryan

Mini News is published weekly for the employees of Data General-Westboro. Material may be submitted for publication to Joan Simoneau, extension 4711, MS A235. Data General - An Equal Opportunity Employer.

Benefits

Scholarship Applications Due December 14

Friday, December 14 is the deadline for submitting applications for the 1986 Data General Scholarship Program.

Each year Data General awards 10 scholarships to children of Data General employees. Children of full-time employees who will be graduating from high school in 1986 and plan to enter a college or university in the United States that same year are eligible.

Applicants must have taken the Preliminary Scholastic Aptitude Test/National Merit Scholarship Qualifying Test (PSAT/NMSQT) given by all schools this past October.

Applications are available from your Personnel or Benefits office. Completed applications should be returned to the Corporate Benefits office at Westboro, Mail Stop D138, no later than Friday, December 14. If you have any questions, call Kate Offring at extension 4557 in Westboro.

Savings And Investment Plan Deadlines

Enrollments And Changes

Friday, December 14 is the deadline for submitting all new enrollments and quarterly changes to the Data General Savings and Investment Plan. The enrollment forms (Used for both new enrollments and changes) must be returned to the Benefits department in Westboro by December 14. All enrollments and changes will become effective January 1.

The program is available to all regular employees who have at least 90 days of service with the company as of January 1, 1985. Newly eligible employees were sent a home mailing containing information about the program and the enrollment procedure. If you have not received this information, contact your Personnel or Benefits representative immediately.

Enrollment Forms are available from your Personnel representative or the Corporate Benefits department in Westboro.

Fund Transfer

Monday, December 10 is the deadline for submitting Fund Transfer requests. Once a year, on January 1, you may transfer all or part of your December 31 account balance from one investment fund to any other investment fund(s). To do this you must complete a Fund Transfer Form and return it to the Benefits department in Westboro no later than December 10. All transfers will become effective January 1.

The transfer of funds will not affect your future deferrals. If your intention is to have all deferrals after January 1 directed to a different fund(s) you must submit an updated Enrollment Form to the Benefits department no later than December 14.

Fund Transfer Forms are available from your Personnel representative or the Corporate Benefits department in Westboro.

Hardware Courses Offered For Employees Dec. 10

Educational Services is conducting a series of courses designed and scheduled for Data General employees only. This series will include Data General Computer Architecture (H100), a five-day course beginning Monday, December 10, the class will be conducted at 2400 Computer Drive, Westboro.

A complete course description for Data General Computer Architecture is available in the current Customer Education Schedule (012-2099).

To enroll or for more information, call Central Registration and Information at extension 4079 or 4096 in Westboro. Supervisor's approval is required prior to registration.

Summary: Data General Computer Architecture teaches the Data General basic instruction set, console operations (both standard and virtual), and I/O operations (interrupt and data channel). In addition, this course covers loading DDOS/DTOS (Data General's diagnostic operating systems), and an introduction to their use. This is a prerequisite to other Data General processor hardware courses.

Who should attend: Computer maintenance technicians.

Prerequisites: Knowledge of digital circuitry and usage, number conversions, Boolean concepts, and oscilloscope use.

Topics:

- Data General computer organization
- Data General instruction set
- Standard switch console operation
- Virtual console operation
- Special Data General CPU instructions
- Data channel
- Diagnostic overview

Activities

Bus For Wachusett Skiers Provided By Ski Club

Due to the overwhelming popularity of the Wachusett Mountain Ski Program, a bus will be provided on Tuesday nights for employees who are taking lessons or interested in the league program, according to Data General Ski Club President Debbie Hixson.

Seats are \$4 per night or \$22 for a six-week reservation. Call Debbie at extension 5003 to reserve space for the program which begins January 8.

Here Are The Winners



Present for the Data General Ski Club drawing for tickets to New England ski areas were (from left) Debbie Hixson, club president; Tom Myers, Doreen Shedd, Bill Poon, John Kelleher, Alan Krentzel and John Watkins. Debbie Zallen was also one of the lucky winners. The contest was held as an added incentive to employees who signed up early for the '84 - '85 Wachusett Mountain Ski Program. Alan and John are ski team coordinators.

Ski Flash

There are a few openings for the Jay Peak, Vermont Ski Trip planned for December 14-16. Contact Debbie Hixson at extension 5003 in Westboro for reservations.

Toastmasters To Celebrate Fifth Anniversary

The Data General Toastmasters' Club is five years old and to celebrate the occasion an anniversary party will be held Thursday, December 6, from 5 to 7 p.m. in the main cafeteria at Westboro.

A buffet will be served followed by a special Toastmasters' meeting. Doreen Mendall and Chris Snyder will speak. All present and past members, as

well as those who would like to join are invited to come to the party. Those planning to attend contact Doreen at extension 6445, Chris at extension 5517 or Karl at extension 6882.

Few "Nutcracker" Tickets Are Available

If you are planning to attend the December 14 presentation of "The Nutcracker", act now as tickets are selling quickly.

Presented by the Boston Ballet, the Christmas classic will be staged at The Wang Center for the Performing Arts in Boston at 7:30 p.m.

Send ticket requests (\$16.90 per person) to "Nutcracker", MS B111. Include a home-addressed, stamped envelope. Make checks payable to the Data General Activities Committee.

Today Is Deadline For Disney Trip Reservations

Today is the last day to make reservations for the trip to exciting Disney World's Magic Kingdom.

Here is the opportunity to enjoy a deluxe (\$476 per person) trip to Disney World's Magic Kingdom March 5-9, featuring luxurious hotel accommodations and many exciting extras.

To reserve space a \$50 deposit is required today. See posters for special children's rates. Make check payable to Magic Kingdom Club and mail it to "Disney Adventure", MS E235. Final payment will be required by December 28. The trip is subject to cancellation pending the number of reservations received.

Pro Basketball Makes Debut In Worcester December 2

Pro basketball will make its debut in Worcester Sunday, December 2 when the Bay State Bombardiers meet the Albany Patroons at 7:30 p.m. at the Worcester Memorial Auditorium.

Tickets are \$5.50 each and may be purchased in the Activities office today only. Tickets are limited and will be sold on a first-come basis. stamped envelope to BASKETBALL, MS B111 in Westboro. Tickets are limited and will be sold on a first-come basis.

Come To the Ice Capades

Ice Capades 1984 will be presented at the Centrum in Worcester next month, with colorful, appealing cartoon characters, appearing live and in-person. The Data General Activities Committee has tickets for the Saturday, December 8, 3 p.m. performance.

Tickets are \$7.50 and may be obtained by sending requests to ICE CAPADES, MS D232. Include a check and a home-addressed, stamped envelope. Checks should be made payable to the Data General Activities Committee.

CARPOOL

Carpooler, to join existing carpool, from Ashby to Webo, Ed x6760.

Carpool, Attleboro, Plainville, Wrentham area to Webo, Sobo, Sam x5246.

Carpoolers, wanted for existing carpool from Brookline-Brighton area to Webo/Sobo, hrs flex, User x7093.

Carpooler, for existing carpool from Chelmsford to Webo, 8-4:30, Chuck x5824.

Carpoolers, wanted from 495/138 area to Milford, 822-7484 (Taunton).

Join/Form Carpool, Norwood, Walpole, Medfield area to Webo, Marguerite x3347.

FREE

Stand Up Freezer, working condition, it's yours if you pick it up, early 50's, 839-4852 (Grafton).

Kittens, were abandoned, need home, 870-0443 (Westboro).

Kitten, abandoned, has seen vet, 473-0959 (Milford).

MARKETPLACE

FOR RENT

Apt, 5 rm, Plantation St, Worcester, off st. parking, \$325/mo + util, 795-1971 (Worcester).

Apt, 2 bdrm, Blackstone, 13 mi from DG Milford, \$70/wk + util, immed. occupancy, 473-7907 (Milford).

Rooms, 3, to share bathroom, kitchen, 3-2268 (Ashby).

apt, reasonable, 1 bdrm, convenient Westboro ctr, 366-0896 (Westboro).

White Mountains Condo, 15 mi to Loon, 10 mi to Waterville, TV, dishwasher, fireplace, pool/sauna, 1 bdrm & loft, Waterville estates, \$175/wkends, avail wkdays, 699-7298 (No. Attleboro).

Apt, 5 rm, up/down, Whitinsville, avail Jan 1, 1st and last rent, sec dep, \$325 + util, 234-2523 (Whitinsville).

House, Acton, 4 bdrms, furnished, avail 12/1/84-3/1/85, 263-5340 (Acton).

NH Chalet, near White Mtns, \$175/wkend, \$275/wk, 872-1818 (Framingham).

Duplex, 7 rm, new bath, apply for Feb. 1 occupancy, \$550/mo + util, 1st & last rent + sec. dep, 234-3103 (Whitinsville).

Duplex, 5 bdrm, 1 1/2 bath, inground pool, stove & dryer, apply for Jan 1 occupancy, \$700/mo + util, 1st & last rent + sec. dep., 234-3103 (Whitinsville).

House, Shrewsbury, 3-4 bdrm Cape, appliances, 2 car garage, avail Jan 1, 755-2160 (Shrewsbury).

WANTED

Roommate, to share lg house w/3 others, \$175/mo + 1/4 util, 865-9669 (Milbury).

Roommate, to share 2 bdrm apt in Marlboro, \$220/mo + 1/2 util, 481-9594 (Marlboro).

Housekeeper, to clean new home in Northboro on a bi-weekly basis, 393-6153 (Northboro).

Roommate, to share house w/2 others in S. Bellingham, \$60/wk + util, washer/dryer, 883-3018 (Blackstone).

Roommate, to share house in Shrewsbury, \$400/mo + all phone calls outside 617 area, 842-7158 (Shrewsbury).

Roommate, to share lg Colonial in Berlin, 2 acre yd, wood/oil heat, 15 min to Webo, 838-2562 (Berlin).

Garage Space, for antique car, must be weatherproof, Webo or Grafton area, 839-2590 (Grafton).

Roommate, 1st floor country house, many extras, \$233 +, 393-2475 (Northboro).

Used Lawnmower, gas, under \$40, 666-0926 (Somerville).

Portable Washer, in good working condition, 278-5360 (Uxbridge).

Child's Wooden Desk, 473-3175 (Milford).

Partner, to share driving & expenses, round trip, Eastern MA - Southwestern Penn. (PA Turnpike) Christmas holidays, 653-5450 (Wayland).

FOR SALE

Dogs, Chocolate Lab pups, males, \$325, 865-9881 (Millbury).

Fireplace Screen, polished brass; glass doors, adjustable venting, 528-6254 (Franklin).

Chest Cabinet, w/tools, must be seen to appreciate, asking \$2000, 365-2532 (Lancaster).

Dining Room Table, glass top, w/4 chairs, \$250/BO, 839-9695 (Grafton).

Storage, dry secure storage for cars, boats, etc., \$100/season, 485-3836 (Marlboro).

Tires, 4, Dick Cepek tires, size 33 x 12.5-16.5, mounted on alum. 8 lug Turbine rims, center caps and lugnuts, \$650/BO, 485-8943 (Marlboro).

Items, 3 prs of children's skies, 2 - 130 cm, 1 - 140 cm, Rossignol, Besser bindings; 2 - 20 in bikes, 1 boys, 1 girls, \$15, 861-8928 (Lexington).

Snowtires, R78-13 mounted, Toyota rims, \$60, 365-3551 (Lancaster).

Items, Magiclean range, \$75; Hotpoint refrig/freezer, \$85; Federal airtight wood/coal stove w/blower, \$200; Heat recuperator, \$50, 476-7882 (Douglas).

Items, Nordica ski boots, size 8 1/2, \$100; Sanyo DCR250 stereo, digital display, synthesizer tuning, \$125, 845-8921 (Shrewsbury).

Tires, pr Radial snow tires, 155/80R13 on 4 1/2 J-13 wheels, will fit Datsun/Toyota/etc., \$40/BO, 443-3236 (Sudbury).

TV, Philco 25 in console, \$25/BO, 839-4867 (Grafton).

Ben Pearson Compound Bow, 55 lb pull w/31 in draw, 1 dozen Bear alum. arrows w/tips, \$75, 464-5347 (Princeton).

Repro boiler, w/circulating pump & flame gun, oil fired, 3 yr old, \$700, 464-5347 (Princeton).

Couch, 3 piece sectional, brown, \$100, 473-8708 (Milford).

Ski Boots, Phantoms, men's size 9, \$90/BO, 568-1280 (Hudson).

Items, Michelin tires, size 185 x 14's, \$50; Sanyo cassette player, under dash unit for cars, \$50, 464-5347 (Princeton).

Maternity Clothes, pants & tops, sizes 16-22, BO, 966-0773 (Bellingham).

Tires, pr of 678-14 retread snows w/5 lug Plymouth rims, used 1 winter, \$50/BO, 966-0773 (Bellingham).

Camera, Canon FTBN w/50 mm 1.4 lens, case, sunpack flash, 966-0003 (Bellingham).

Tire Rims, 14 in, 5 lugs, 15 in, 5 lugs, 473-4347 (Milford).

Portable Washer, Whirlpool, permanent or faucet hook-up, almond, \$245, 881-2487 (Ashland).

Skies, Atomic 195 cm, \$100, 661-1811 (Cambridge).

Waterbed, queen size, wood frame & head shelf, side cushioning, \$150, 661-1811 (Cambridge).

Holiday Rambler Trailer, 121 ft, Tandem axle, fully self-contained, furnace, slps 6, 393-6243 (Northboro).

Guitar, Martin D35, 1979, \$1200, 731-0437 (Brookline).

White Juliet Bridal Veil, never been worn, \$50, 359-5131 (Medfield).

Home Entertainment Unit, self-contained, maple finish, \$50/BO, 935-6477 (Woburn).

Optigan Organ, incl. several program discs & bench, \$250/BO, 263-4639 (Acton).

Bunnies, ready in 4 wks, 529-3181 (Upton).

Micromodem 1 or Apple IIE personal computer, \$100, 456-8195 (Harvard).

Woodstove, air tight, double chamber, baffles, \$60, 779-5139 (Bolton).

Radial Tires, 3, GR78-14, mounted on Chevrolet rims, \$30 ea. w/rims, 485-1088 (Marlboro).

Tires, Firestone snow tires G78-15, on GM rims, \$60, 248-7567 (Charlton).

Commodore 64K Computer System, complete, disk drive, modem, printer, tape drive w/software, \$800, 248-7990 (Charlton).

Refrigerator, brown, 15 cu ft, \$50, 244-5852 (Newton).

Items, 27 in Ross Eurotour 4, 5 spd bike, used 1 summer, \$75; Toro lightweight snow blower, \$100, 393-6415 (Northboro).

Dinette Set, lg, round, white & chrome, modern, \$200, 244-7208 (Newton).

Sears Washer, apt. size, 2 yrs old, \$250, 842-5875 (Shrewsbury).

Studded Radial Snowtires, 2, P155/80R13, 2 mo old, \$75 a pr, 537-0304 (Leominster).

Christmas China, 8, 5 pc place settings, Christmas tree design, BO, 534-4484 (Leominster).

Radial Snowtires , 2, fit Chevette, \$50, 842-3083 (Shrewsbury).

Townhouse , 3 bdrm, Northboro, \$89,900, 393-6814 (Northboro).

Dogs , Pedigree Shih-Tzu's, 1 yr & 11 wk old, \$400/\$600, 393-6814 (Northboro).

Items , love seat, \$220; coffee table, \$120; wall unit, \$180; side tables, \$40 ea., and more, 393-6814 (Northboro).

Items , ceiling tiles 24 in x 48 in, assor. sizes, w/cross pieces, \$50; Choc-O-Lot toy candy maker, \$3; GE Toaster/Oven, \$10, 478-0560 (Milford).

Tires , pr of El Dorado ww snow tires, 7K mi, mounted \$75, 537-0304 (Leominster).

Items , 2, snowtires, 14 in, \$80; stage microphone, \$65, 278-2309 (Uxbridge).

Items , Sears 5 in color portable TV plugs into cigarette lighter, \$200/BO; 5 pc silver plate coffee service, \$50/BO, 756-7031 (Shrewsbury).

Items , Cold Spot freezer, 15.8 cu ft, upright; 10 spd 26 in bike; stainless steel baking oven, BO, 393-3268 (Northboro).

Items , Maytag washer, \$200; 15 cu ft refrig, free, 852-5415 (Worcester).

Ski Equipment , skies, Kastle pools, Nordital boots, men's size 9, 852-2714 (Worcester).

Items , Toyota snow tires used 1 mo, Canon FTB Camera w/case, \$125, 237-4546 (Wellesley).

Sears Gas Dryer , \$75, 263-2126 (Acton).

Ski Equipment , 140 Rossi/Soloman, \$69, 150 Rossi/Solomon, \$39, Nordica size 6 boots, \$29, 443-3762 (Sudbury).

Dining Room Furniture , Oak table, 6 chairs, 881-6514 (Ashland).

Rogers Drums , 6 pc, many extras, \$550, 478-2451 (Milford).

Sony Betamax VCR , wired remote, incl. 10 tapes, \$350, 278-2634 (Uxbridge).

Gas Stove , 30 in, white, \$40, 853-5604 (Worcester).

'63 Apache Tent Trailer , new canvas, new add-a-room, slps 4, light weight, \$700/BO, 568-0877 (Marlboro).

Steel Belted Radials , 4, approx 2K mi, 4 lugs, size 13, BR-78-13 Dunlop, \$300/BO 568-0877 (Hudson).

Radial Tires , 2, 13 in, studded, \$75, 393-7271 (Northboro).

Items , kitchen table w/4 chairs; 9 x 11 area rug, brown; den furniture, 2 sofa beds, cornerpiece w/AM/FM radio; girls canopy bed, full size, w/boxspring, living rm center piece & corner piece, 366-7079 (Westboro).

AUTOS

'53 Jeep 4x4 Wagoneer , 4 cyl, \$550/BO 528-3948/376-2110 (Franklin/Millis).

'69 Buick Skylark , convertible, \$150/BO, 529-3181 (Upton).

'71 VW Bug , orange, \$1000/BO, 429-1664 (Holliston).

'71 Chevy Malibu 307V8 , \$350, 524-7913 (Boston).

'72 Chevelle Malibu , \$550, 478-0818 (Milford).

'72 Volkswagen , good for parts or basic trans, 38K mi, 870-0078 (Westboro).

'73 Olds Toronado , PS/PB/PW, auto, new trans, \$975, 648-0858 (Arlington).

'74 VW , 25K mi, new engine, 234-2523 (Whitinsville).

'75 Alfa Romeo Alfetta , 4 dr, 5 spd, AM/FM/cassette, new brakes, exhaust, 75K mi, \$1300/BO, 791-1349 (Worcester).

'76 Camaro , orig owner, 6 cyl, auto, PS/PB, AM/FM, \$1695/BO, 839-3441 (Grafton).

'76 Pontiac Grand Prix , recent shocks, radials, battery, AM/FM/cassette, \$2200, 393-7825 (Northboro).

'76 Kawasaki KH500 , many new parts, \$500, 476-7882 (Douglas).

'77 Honda Civic , new brakes, exhaust, 2 tires, \$1900, 429-5361 (Holliston).

'77 Pontiac LeMans Station Wagon , new tires, exhaust, \$1200, 366-7810 (Westboro).

'77 AMC Pacer , \$1000, 393-6415 (Northboro).

'78 Pontiac LeMans Wagon , auto, AC, V-8 305, full power, \$2750, 877-8111 (Framingham).

'78 Ford Mustang II , snrf, PB/PS, 4 spd, AM/FM/cassette, 73K mi, \$1800, 839-4852 (Grafton).

'78 AMC Concord Wagon , 6 cyl, AM/FM, PS/PB, \$2500/BO, 867-7115 (W. Brookfield).

'78 Subaru Brat , 4 wd, standard, 1984 engine, \$2400/BO, 481-2122 (Marlboro).

'78 Saab Turbo , many factory extras, \$5300, 883-1133 (Blackstone).

'78 Chevy Malibu Wagon , 64K mi, AC, \$2500, 655-8697 (Natick).

'79 Toyota Corolla , 4 spd, 2 dr, recent tires, no rust, \$2300/BO, 753-7167 (Worcester).

'79 AMC Spirit , 6 cyl, auto, new tires, \$3000, 799-5472 (Shrewsbury).

'80 Mazda 626 , 1 owner, 5 spd, AC, AM/FM, new snow tires, \$3950 (Grafton).

'80 Ford Fairmont , loaded, \$2500, 481-0850 (Marlboro).

'80 Honda Civic , 5 spd, hatch, AM/FM, 60K mi, must sell, \$2400/BO, 755-2160 (Shrewsbury).

'80 Chevy Monza , 2 dr coupe, 4 cyl, 4 spd, 27K mi, \$2800/BO, 366-4687 (Westboro).

'80 VW Rabbit , Diesel, highway mi, one owner, \$1400, 492-6761 (Cambridge).

'81 Olds Cutlass Supreme , 2 dr, AC, 6 cyl, 47K mi, \$5800, 753-4382 (Worcester).

'81 KTM 390 Austrian Motorcycle , \$700, 485-8422 (Marlboro).

'81 Ford F-100 Custom , 300 cu in, 6 cyl, standard w/overdrive, cap, 28 mpg, 529-4068 (Upton).

'82 Honda Accord , hatch, 5 spd, AC, AM/FM, radials, 37K mi, \$6500, 872-6026 (Framingham).

'82 Camaro Z28 , t-roof, AM/FM/cassette, Eagle GT's, \$8000/BO, 754-3755 (Worcester).

'82 Dodge 400 , convertible, 48K mi, PW, AM/FM/cassette, tilt, cruise, \$8750/BO, 486-4728 (Littleton).

'82 Olds Firenza S Coupe , 34K mi, AC, AM/FM, PS/PB, \$5000, 478-0109 (Milford).

'82 Alfa Romeo GTV6 , black, many extras, (401) 942-9132 (Cranston, RI).

'82 Chevrolet 3/4 ton Pickup , 6 cyl, auto, 35K mi met blue, \$6700/BO, 473-1629 (Hopedale).

'82 Honda Accord , 4 dr, 5 spd, rustproof, AC, AM/FM, 4 spkrs, \$7000, 839-3283 (Grafton).

'82 Honda Accord , hatch, 5 spd, AC, AM/FM, Radials, 37K mi, \$7200, 872-6026 (Framingham).

'83 Yamaha 250CC Dirt Bike , \$550, 842-4537 (Shrewsbury).

'83 Mercury Grand Marquis LS , 4 dr sedan, fully optioned, 15K mi, \$9850, 865-3641 (Sutton).

'83 Renault Alliance , 2 dr, AM/FM, 28K mi, \$5000/BO, 883-9370 (Bellingham).

'83 Toyota 4x4 Short Bed Pickup , 30K mi, F/G cap, \$7500, 529-6513 (W. Upton).

'84 Kawasaki GPZ750 Turbo , 3 yr warranty, plus extras, \$3200/BO 476-7882 (Douglas).

'84 Ford F150 , 6 cyl, 300 engine, w/line-a-bed, 6K mi, \$7500 (401) 765-5496 (Rhode Island).

'84 Toyota Corolla , 5 spd, 4 dr sedan, AM/FM, 10K mi, \$6500/BO, 755-2160 (Shrewsbury).

MENU

Westboro

Cafeteria , Monday, Stuffed Shells; Tuesday, Chicken Cordon Bleu; Wednesday, Calzones, Thursday, Seafood Roll; Friday, Baked Fish.

Dee Gee's , Monday, Baked Ham; Tuesday, Beef Stew; Wednesday, Baked Chicken; Thursday, Reuben Sandwich; Friday, Baked Fish (Orders - call extension 3354).

Pizzeria , phone orders 10 a.m. - 2 p.m., call extension 4376.

Southboro , Monday, Baked Chicken; Tuesday, Lasagna; Wednesday, Sweddish Meatballs; Thursday, Chicken Parmesan; Friday, Fried Fish.

Milford , Monday, Stuffed Chicken Breast; Tuesday, Baked Meatloaf; Wednesday, Build-a-Burger; Thursday, Veal Cutlet Parmesan; Friday, Seafood Platter.