

REVISIONS				
REV.	DESCRIPTION	DRFTG.	APP. BY	DATE
04	REDRAWN	R.W.C.		10-30-72
05	ECO # 1527	R.W.C.		11-1-72
06	ECO # 5484 A	W.G.D.	D.L.W.	11-7-72

DIVIDE NOTES:

TEST: AC0 - AC2 IF NO CARRYOUT OF ADDER, SHIFT AC0 1 AC1 LEFT. IF CARRYOUT OF ADDER, TERMINATE DIVIDE.

DIV: ALWAYS ADD DURING FIRST CYCLE AFTER TEST. IF LAST QUOTIENT BIT = 0, THEN: AC0 + AC2 → AC0. AC0 1 AC1 SHIFTED LEFT, Q-BIT → AC1/5. IF LAST QUOTIENT BIT = 1, THEN: AC0 - AC2 → AC0. AC0 1 AC1 SHIFTED LEFT, Q-BIT → AC1/5. QUOTIENT BIT = CRYOUT @ SUBTRACT @ PREV. CRY. DURING LAST CYCLE (TC), DO NOT SHIFT AC0.

CRTN: IF FINAL QUOTIENT BIT = 1, THEN: DO NOTHING, YOU ARE FINISHED. IF FINAL QUOTIENT BIT = 0, THEN: AC0 + AC2 → AC0. DO NOT SHIFT AC0 OR AC1.

NOTES:

1. ALL RESISTORS ARE 1/4 W., 5% UNLESS OTHERWISE SPECIFIED.

2. ALL INVERTERS ARE 8H90 UNLESS OTHERWISE SPECIFIED.

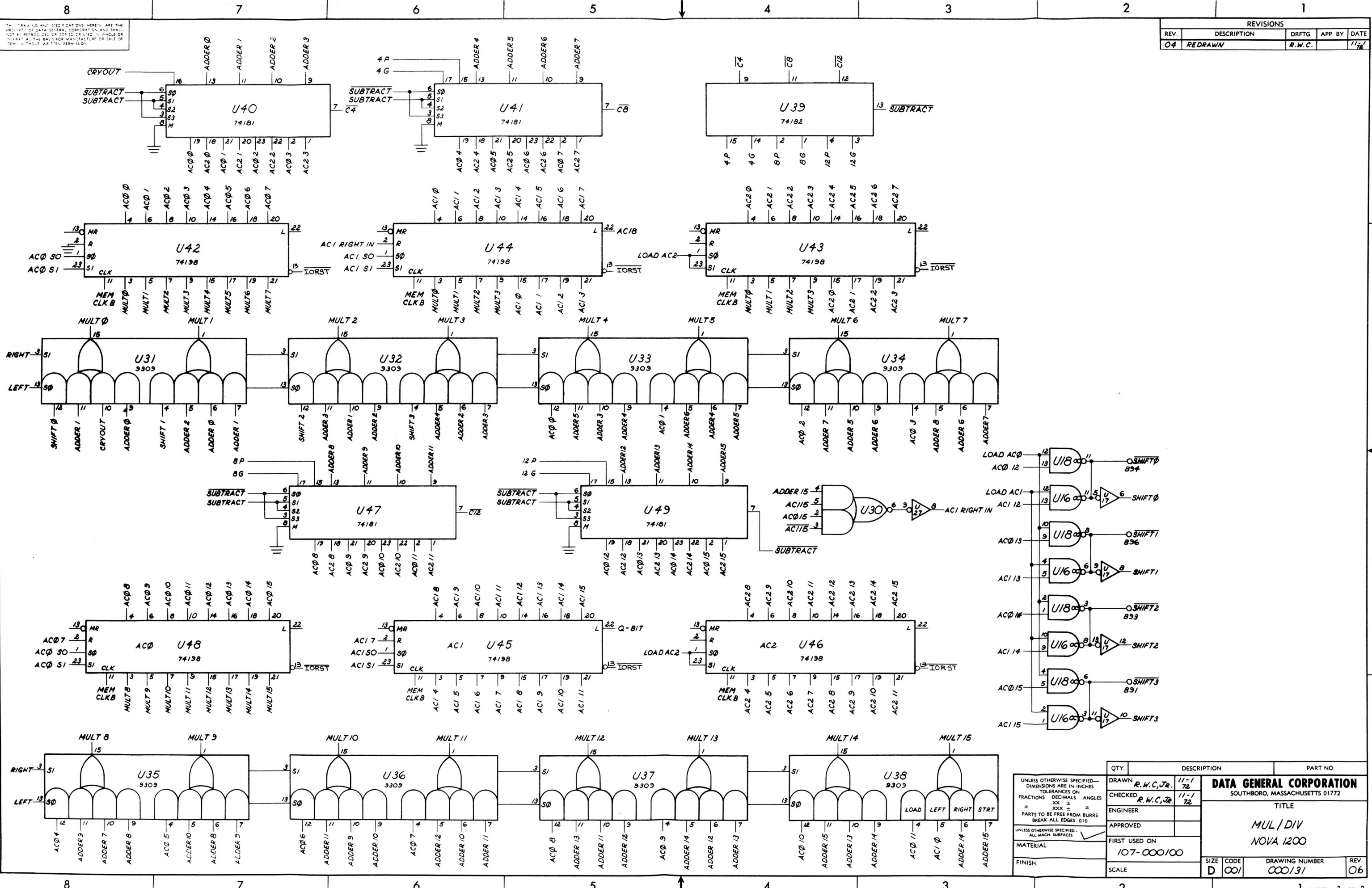
QTY.	DESCRIPTION	PART NO.
	DRAWN R.W.C., Jr.	10-30-72
	CHECKED R.W.C., Jr.	11-1-72
	ENGINEER	
	APPROVED	
	FIRST USED ON	107-000/100
	MATERIAL	
	FINISH	
	SCALE	

DATA GENERAL CORPORATION
SOUTHBORO, MASSACHUSETTS 01772

TITLE
MUL/DIV

NOVA 1200

SIZE	CODE	DRAWING NUMBER	REV.
D	001	000131	06



REVISIONS				
REV	DESCRIPTION	DRFTG	APP. BY	DATE
04	REDRAWN	R.W.C.		11/72

QTY.		DESCRIPTION		PART NO.	
DRAWN		R.W.C./Jr.		11-1/72	
CHECKED		R.W.C./Jr.		11-1/72	
ENGINEER					
APPROVED					
FIRST USED ON		107-000/00			
MATERIAL					
FINISH					
SIZE	CODE	DRAWING NUMBER	REV.		
D	001	000/31	06		

DATA GENERAL CORPORATION
 SOUTHBORO, MASSACHUSETTS 01772

TITLE
MUL/DIV
 NOVA 1200